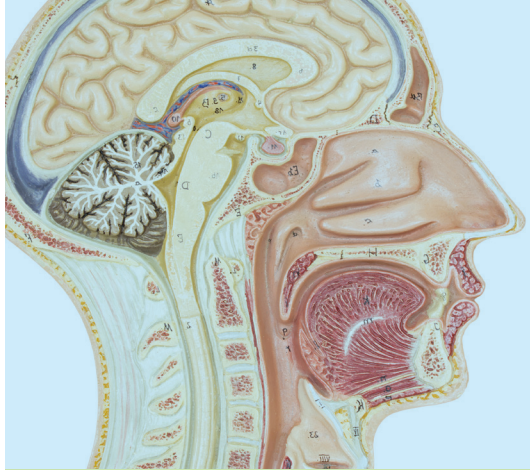


JUST THE FACTS

FILLING OUT THE PUBLIC HEALTH LAB REQUISITION



Section 1

Physician: Dr. S. Wajid Ahmed

Phone: 519-258-2146

Fax: 519-258-8672

The name of the family or facility's doctor can be entered here as well, and they will also receive a copy of the results.

Agency: Windsor-Essex County Health Unit

1005 Ouellette Avenue, Windsor, ON N9A 4J8

Section 2

Must be completely filled out.

If the patient is from a Long-Term Care Home, please write the name of the home in this section. **Remember to include the outbreak number for this outbreak (if known).**

Section 3: Tests Required

Enteric – stool specimens

Respiratory – nasopharyngeal specimens:

Influenza A, B (Flu) Virus Detection

Direct test for Influenza and RSV if suspected. *Direct test will apply to the first few specimens only in an influenza outbreak.*

Unless otherwise ordered by the Windsor-Essex County Health Unit.

All samples must be transported to the Public Health Lab in London, Ontario in approved packaging by calling the Health Trans Courier 519-791-0515 after 8 a.m.

Examples of approved packaging: a soft-sided cooler bag, or a box that is sealed and labelled, SPECIMENS.

Failure to fill out the lab requisition properly could result in rejection of the sample, or cause a delay in test result reporting.

Leaking specimens will not be processed!

Section 4

All applicable boxes must be filled in.

Comments

Attention Outbreak Team.

For more information.

Public Health Ontario

[www.publichealthontario.ca/en/pages/Results.aspx?k=influenza labstracts](http://www.publichealthontario.ca/en/pages/Results.aspx?k=influenza%20labstracts)

www.wechu.org

519-258-2146 ext. 1444