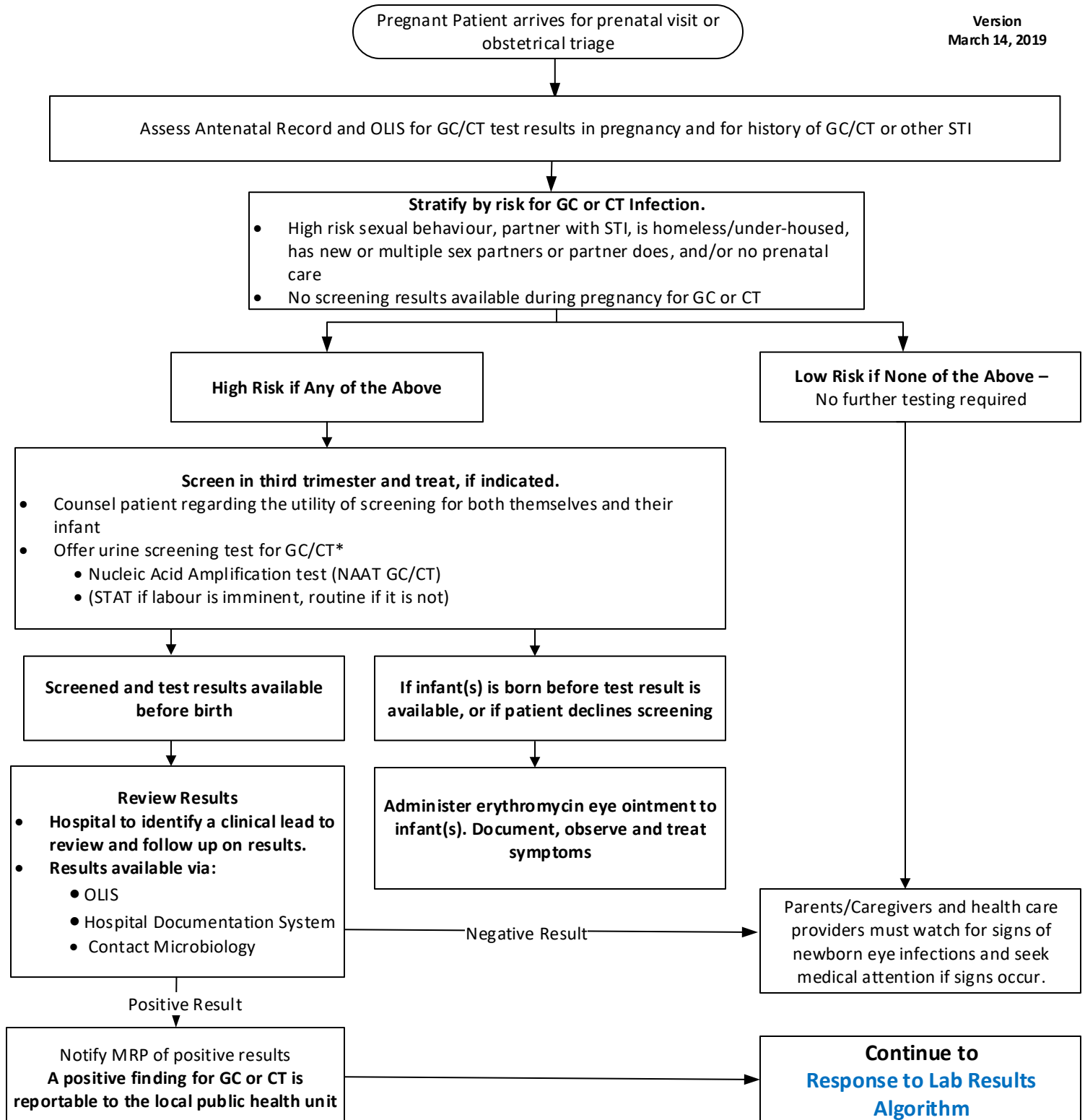


Flow Chart for Management of Infants & Mothers During Erythromycin Eye Ointment Shortage

Screening Algorithm



Legend
 GC = Gonococcus (Neisseria Gonorrhoea)
 CT = Chlamydia Trachomatis
 STI = Sexually Transmitted Infection
 NAAT = Nucleic Acid Amplification Test
 MRP = Most Responsible Practitioner
 OLIS = Ontario Laboratory Information System

*Duration of time for test results may vary in different regions. Hospitals may have to individualize and link with public health lab for tailored directives.

NOTE:
 When the newborn and mother is discharged, **make a note on the baby's chart** that is provided to the mother to support the first baby check-up as to **whether erythromycin was administered at time of birth.**
Signs of an eye infection may include:
 Eye irritation, drainage that is yellowish to greenish in colour, pain and tenderness in the eyes, and/or swollen eye lids.