



INVASIVE GROUP A STREP

Group A Strep (GAS) is a type of bacteria (germ). It can live in the nose or throat, or on the skin. Some people have GAS and do not feel sick. They are called “carriers.” Carriers can still spread the germ to others.

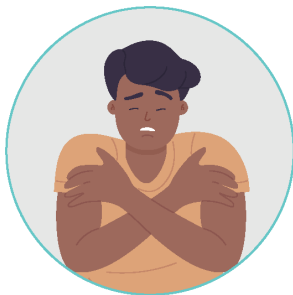
Transmission (Spread)

GAS spreads through close contact with someone who has it. This can happen from coughs or sneezes, kissing, sharing cigarettes or vaping devices, sharing needles, or touching an infected cut or wound.

Early Signs and Symptoms



Sore throat



Fever or chills



Headache



Muscle aches



Nausea, vomiting
or diarrhea

SERIOUS ILLNESS

Flesh-eating disease (a very serious skin infection) that can cause:

- Blisters on the skin
- A sore area that is red, warm, swollen, and very painful
- Skin that changes colour



Strep toxic shock syndrome (a rare, life-threatening illness) that can cause:

- Dizziness
- Confusion
- Sudden, strong pain (often in an arm or leg)
- A flat, red rash over large areas of the body



Call a health care provider if you or someone you know has symptoms.

For more information:
wechu.org/strep-infec
519-258-2146 ext. 1420

