

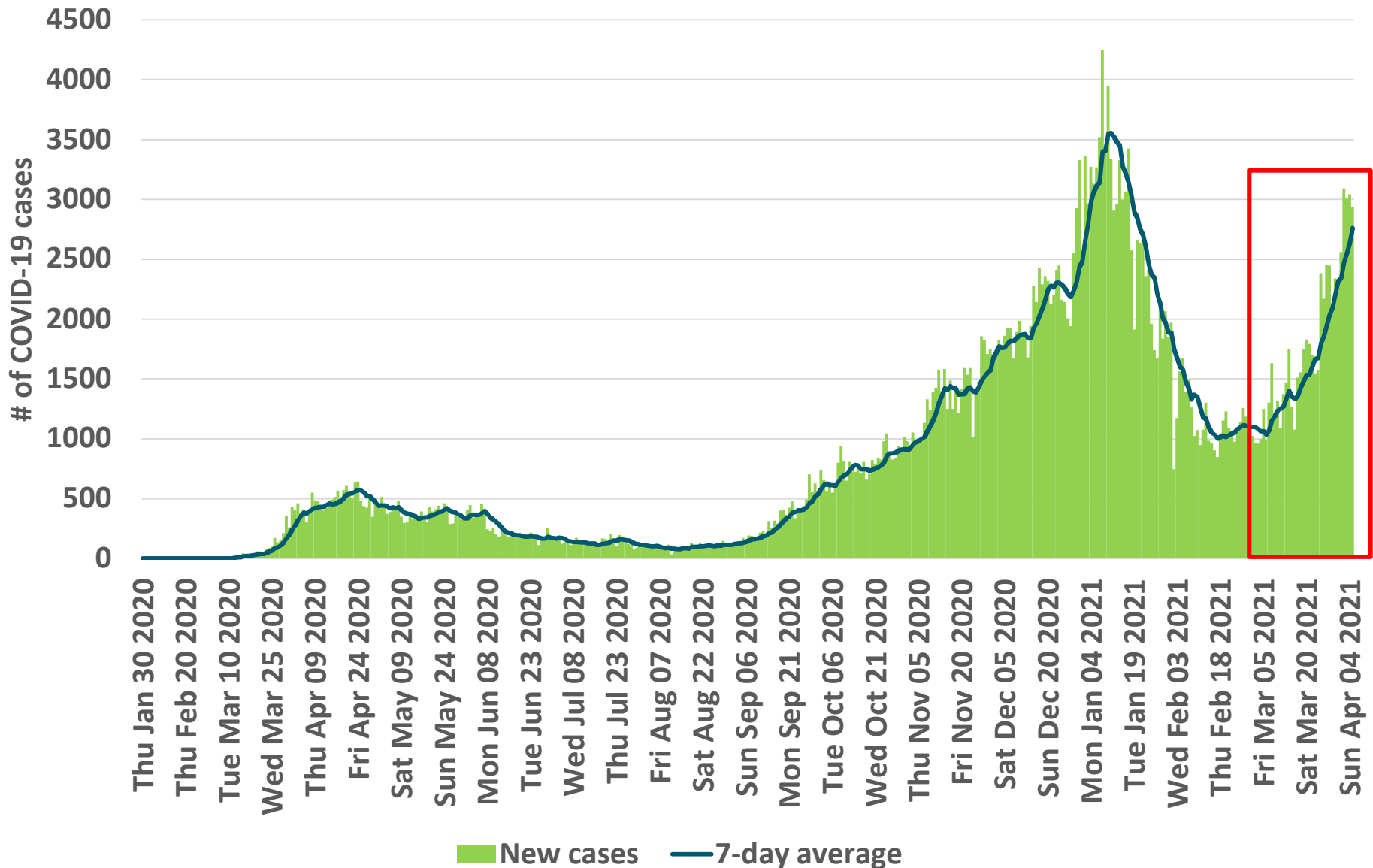


COVID-19 *LIVE UPDATE*

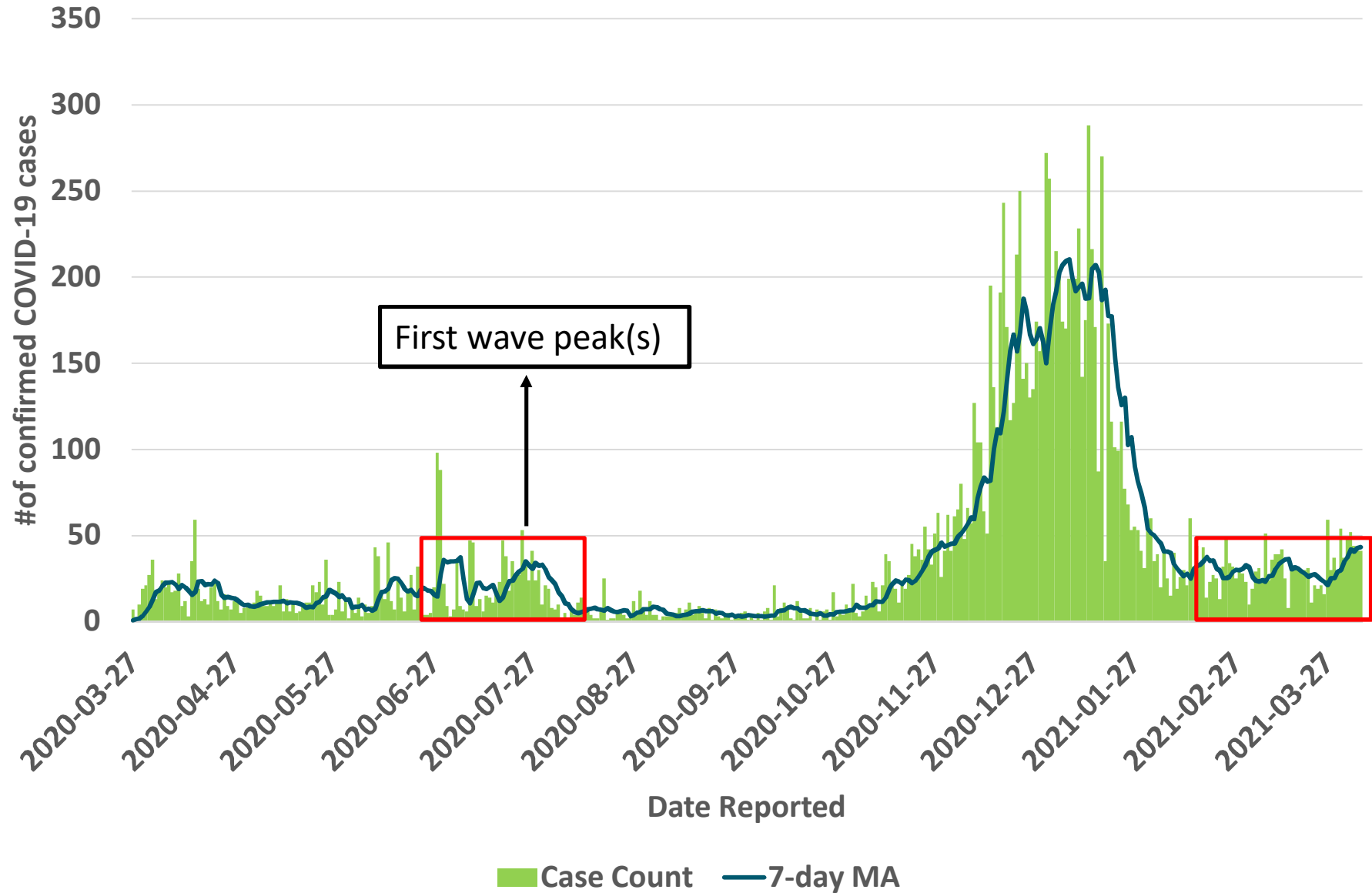
April 6, 2021

FOR UP-TO-DATE
CASE NUMBERS
VISIT
wechu.org

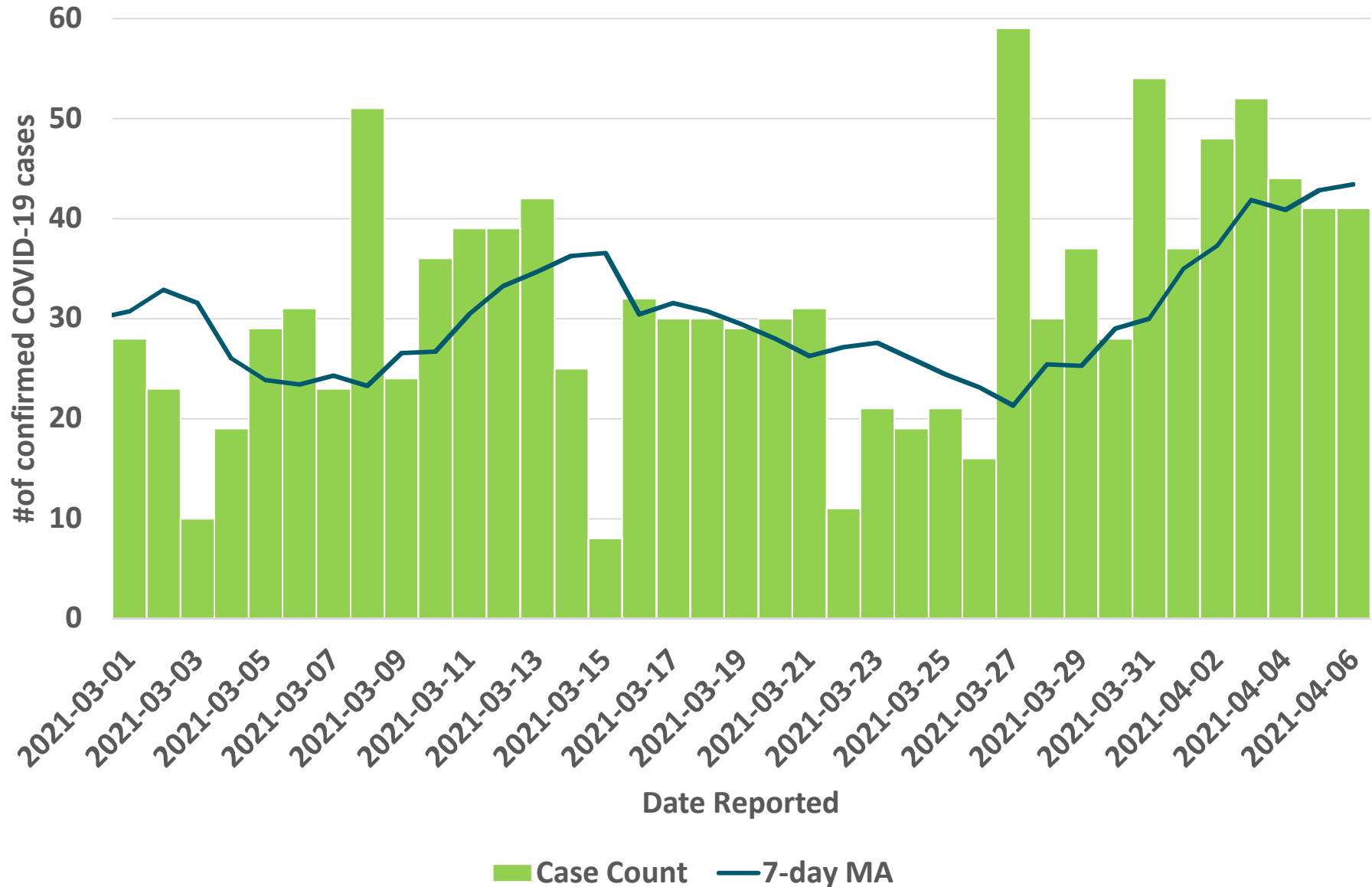
Number of Cases in Ontario (Daily New cases and 7-day average)



Epidemic Curve by Reported Date in Windsor-Essex

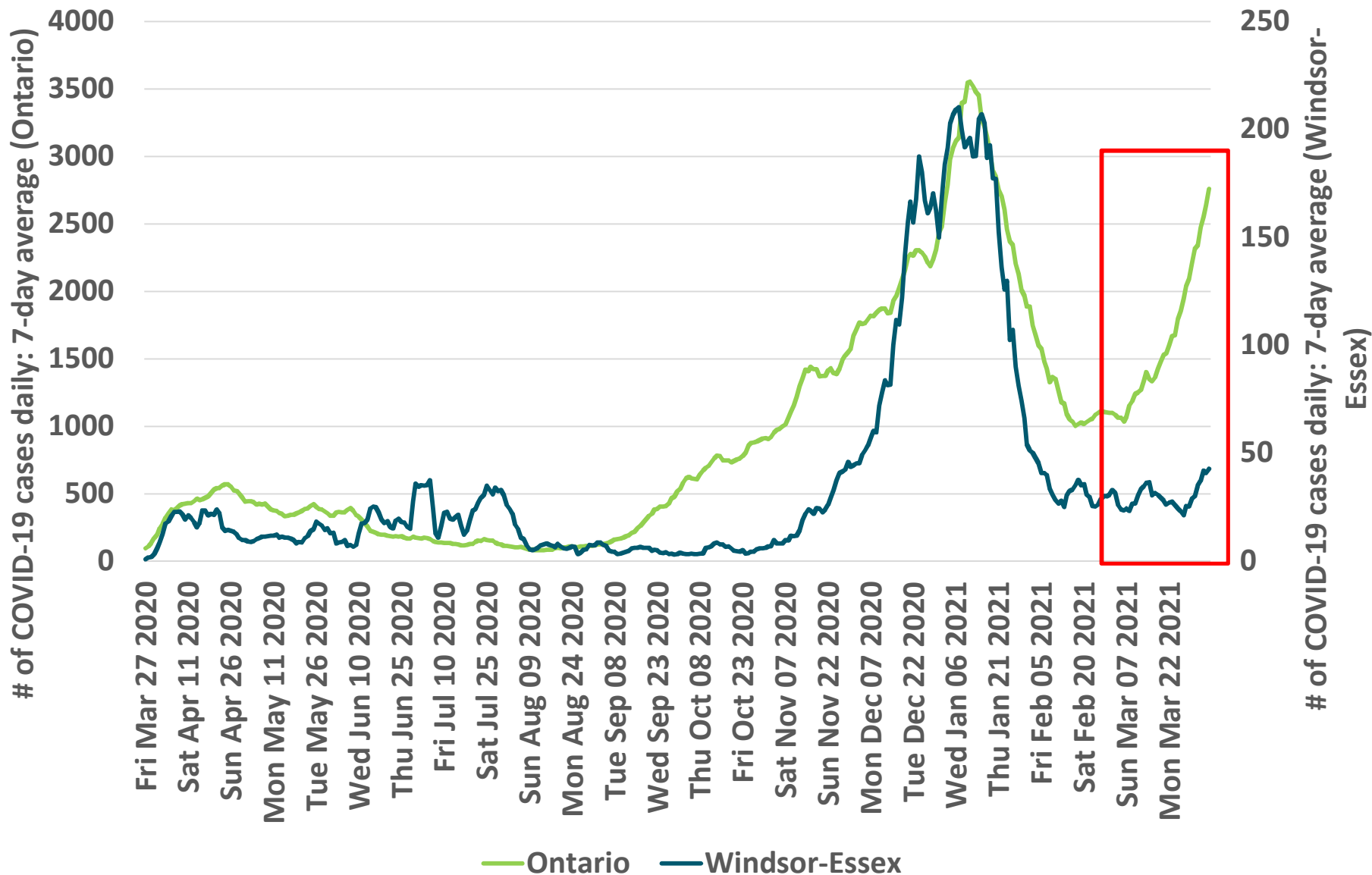


Epidemic Curve by Reported Date in Windsor-Essex (March 1 to April 6)

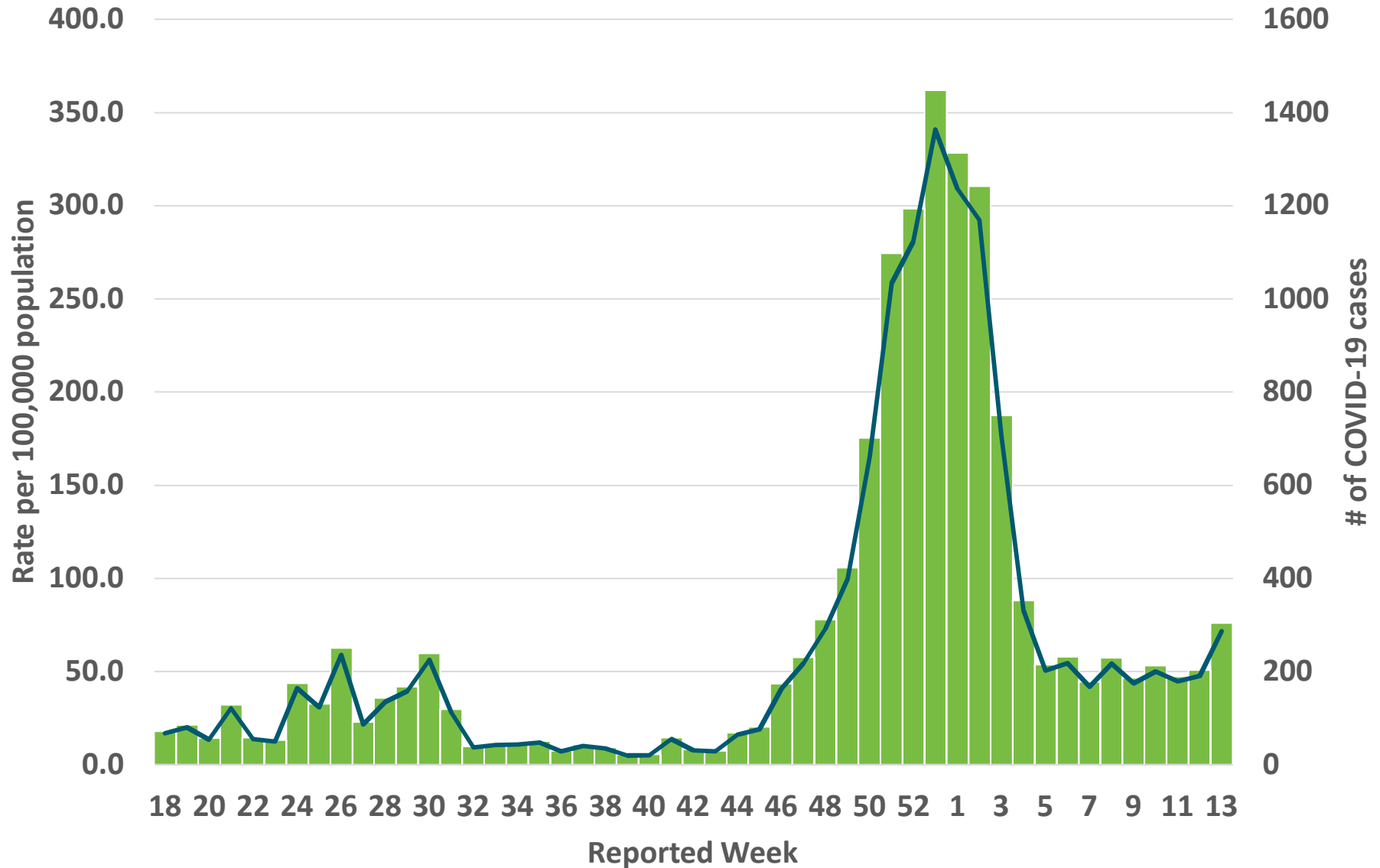


2021-04-06

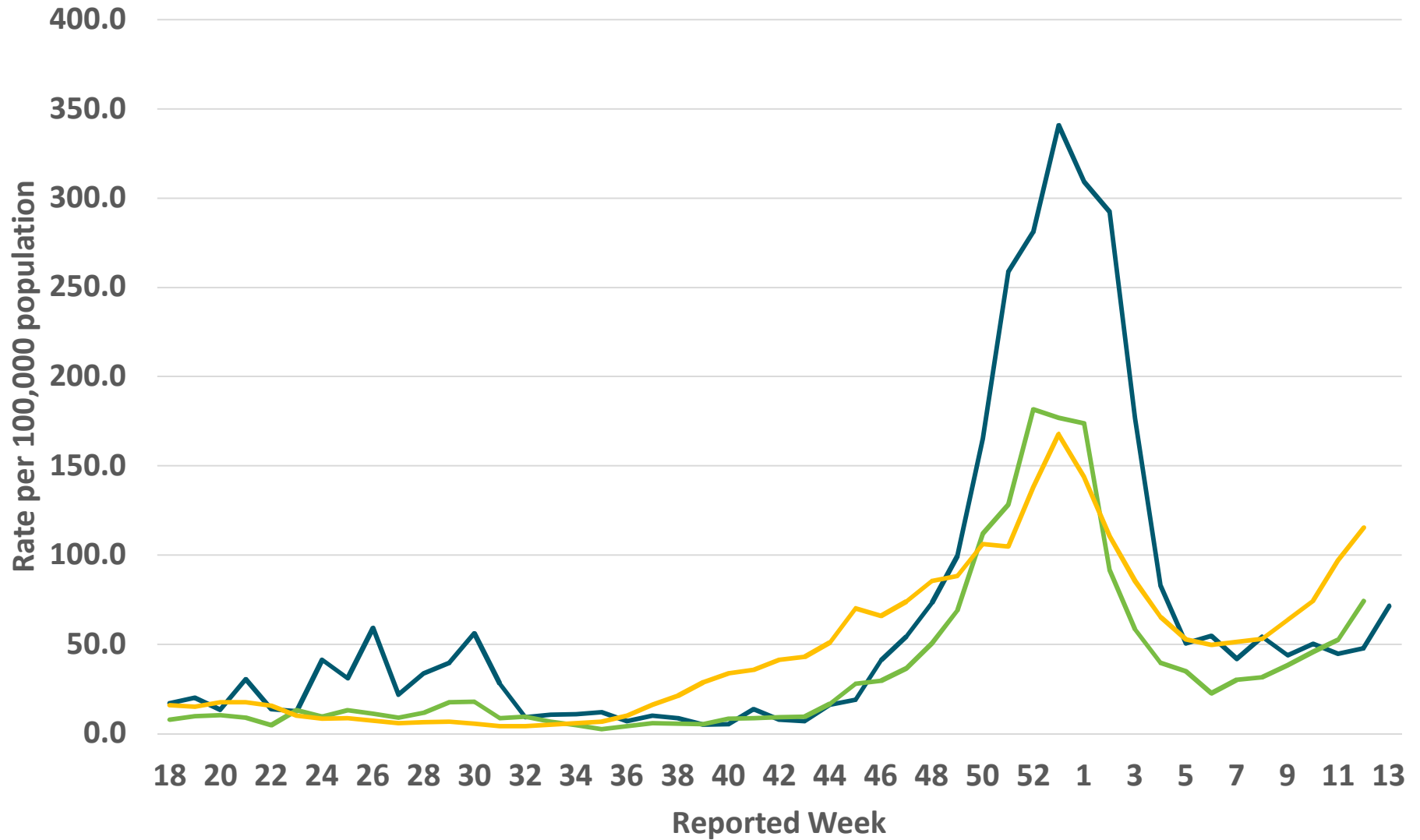
7-Day Average Comparison: Windsor-Essex vs. Ontario



Windsor-Essex Rate by Reported Week



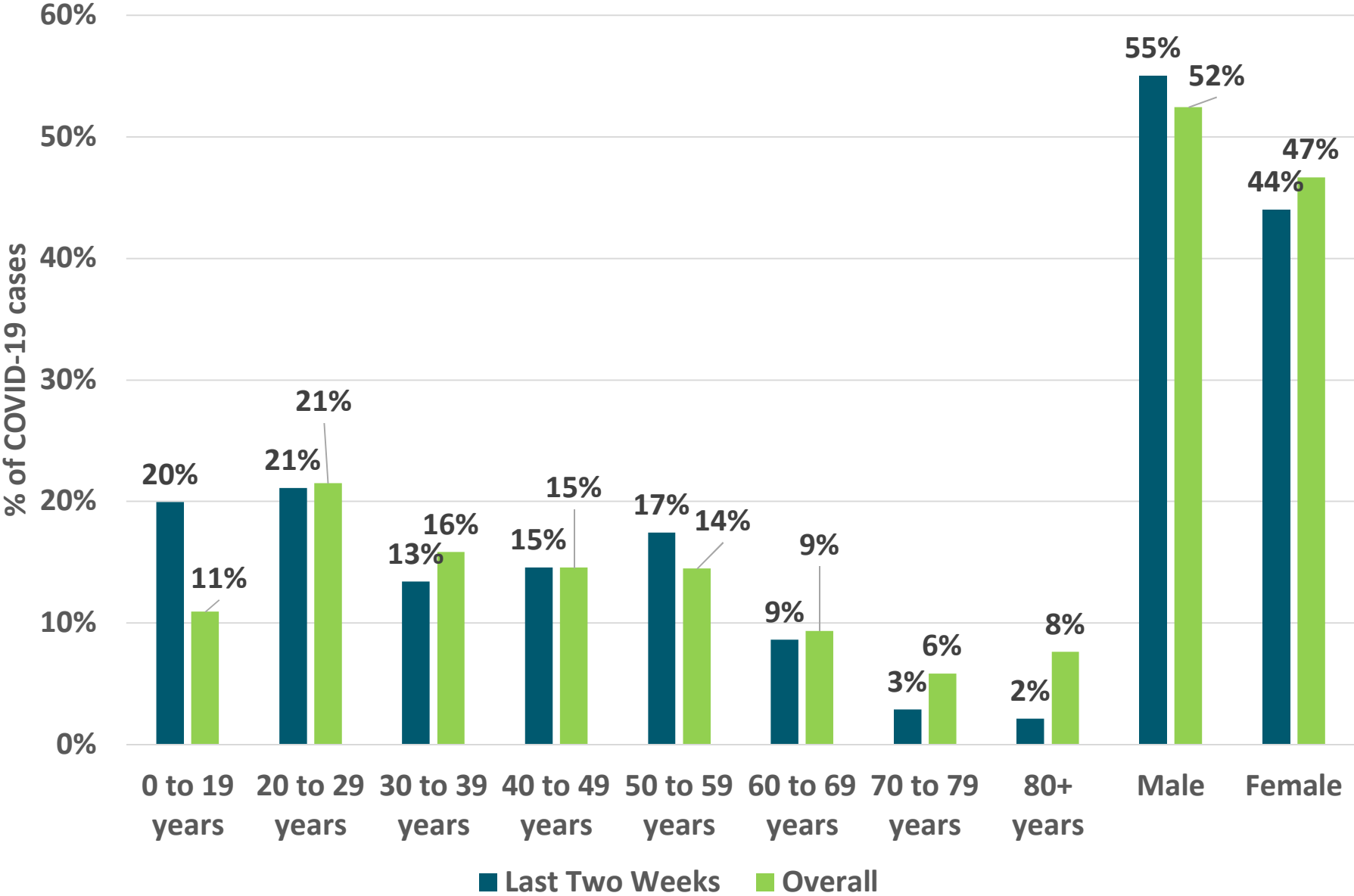
Weekly COVID-19 Rate



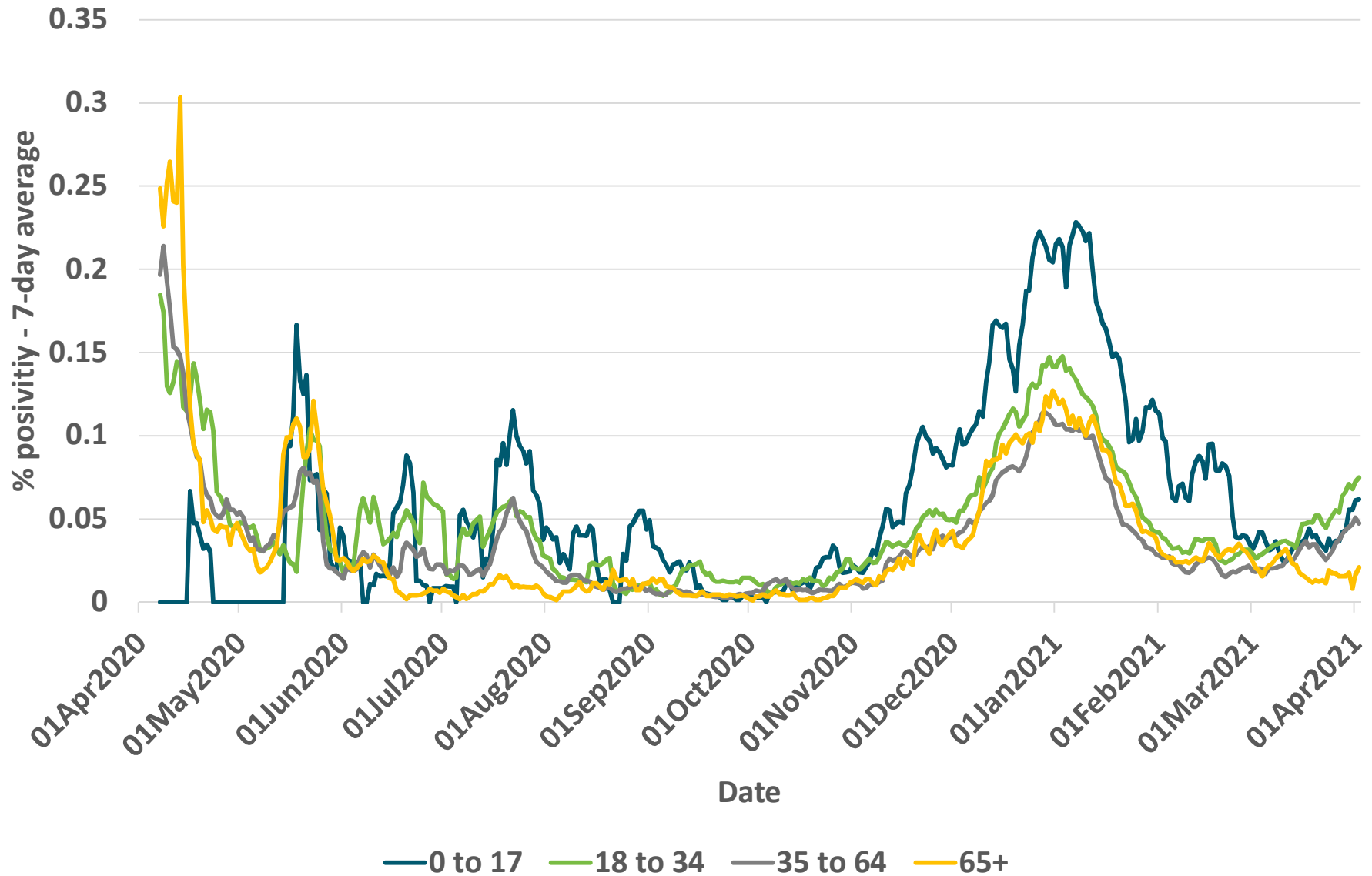
— Windsor-Essex Rate — Southwestern Ontario — Ontario

2021-04-06

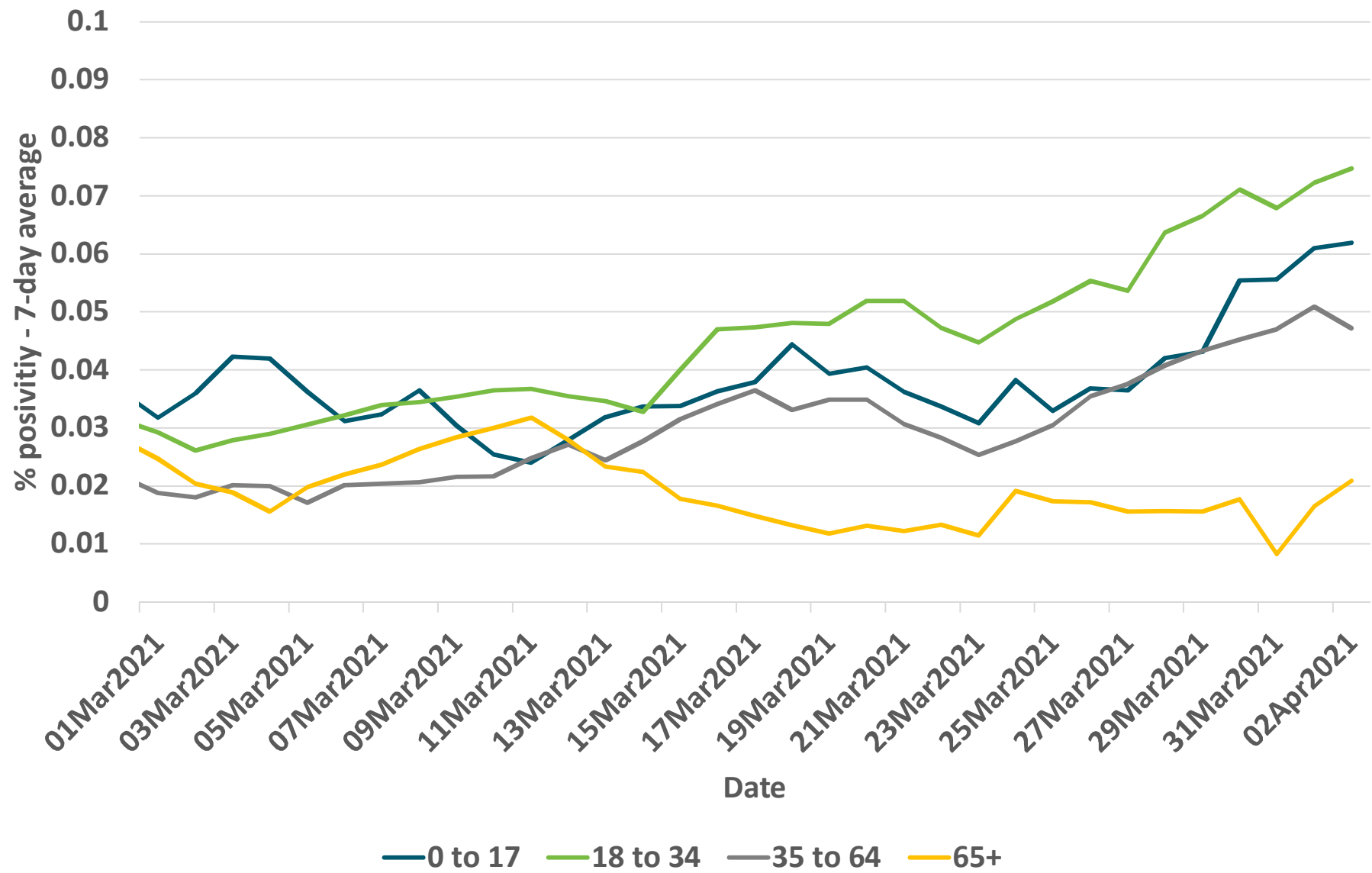
Age Breakdown of Windsor-Essex Cases



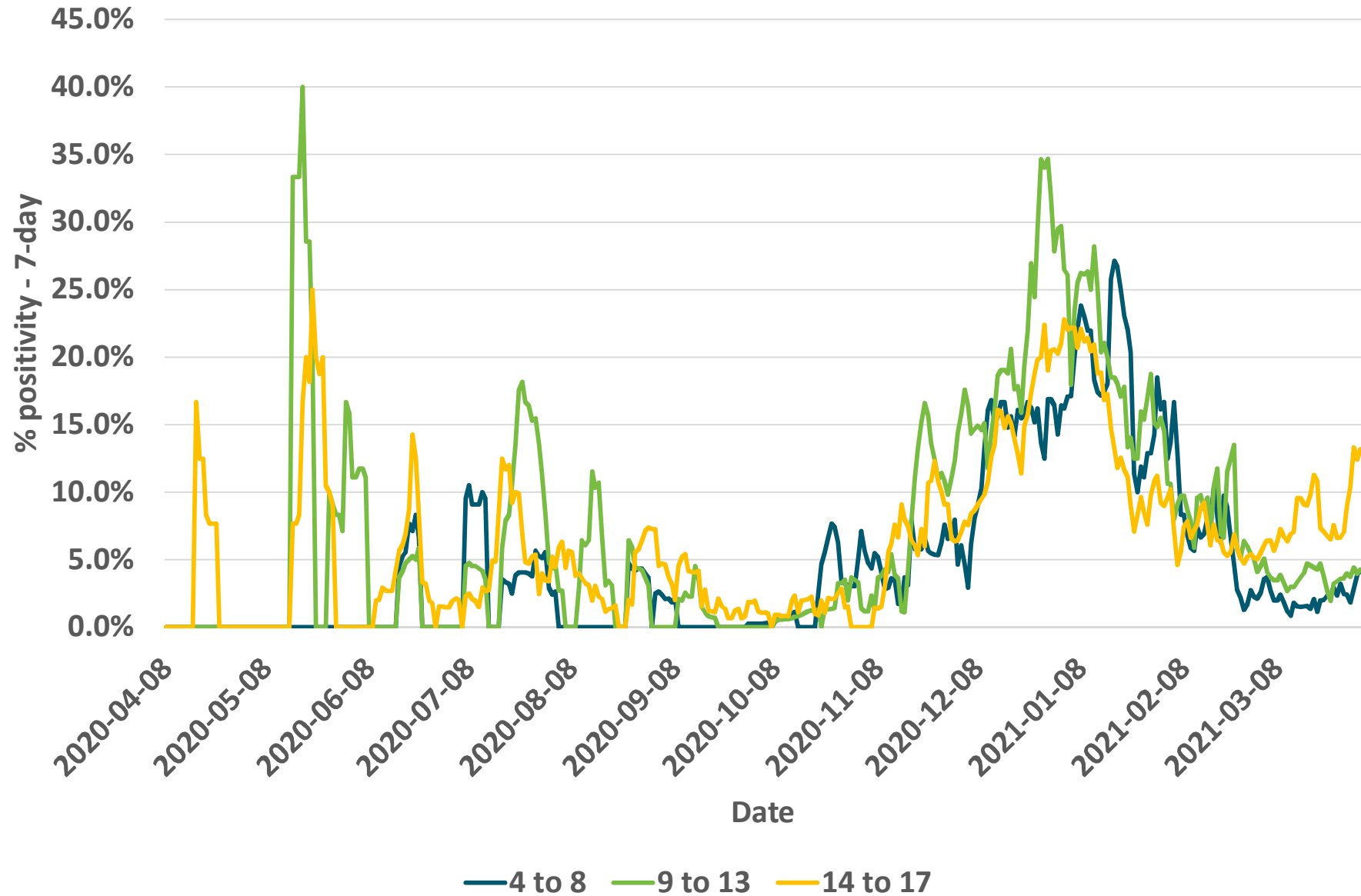
Percent Positivity by Age Group



Percent Positivity by Age Group (Mar-Apr)

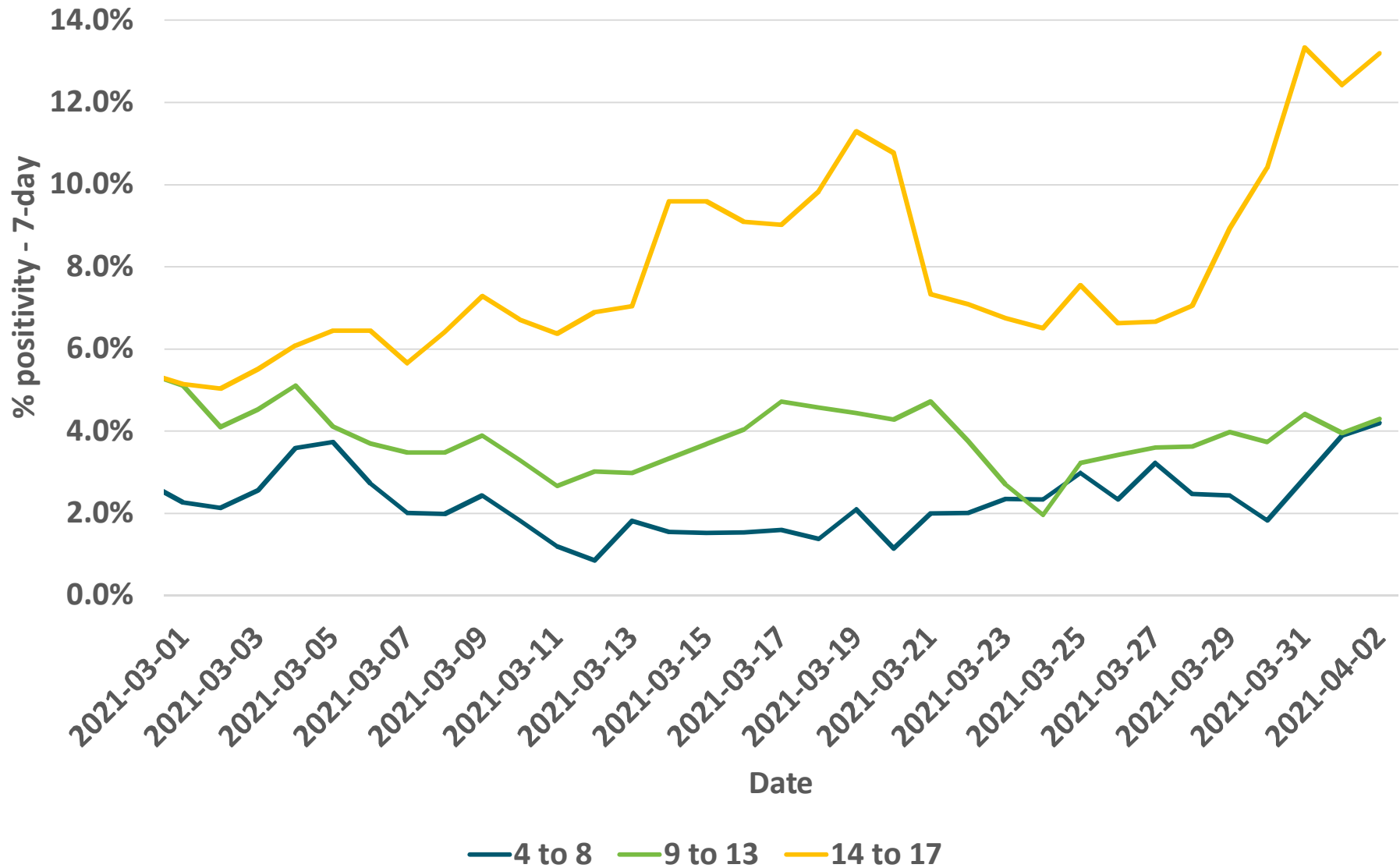


Percent Positivity by School Aged



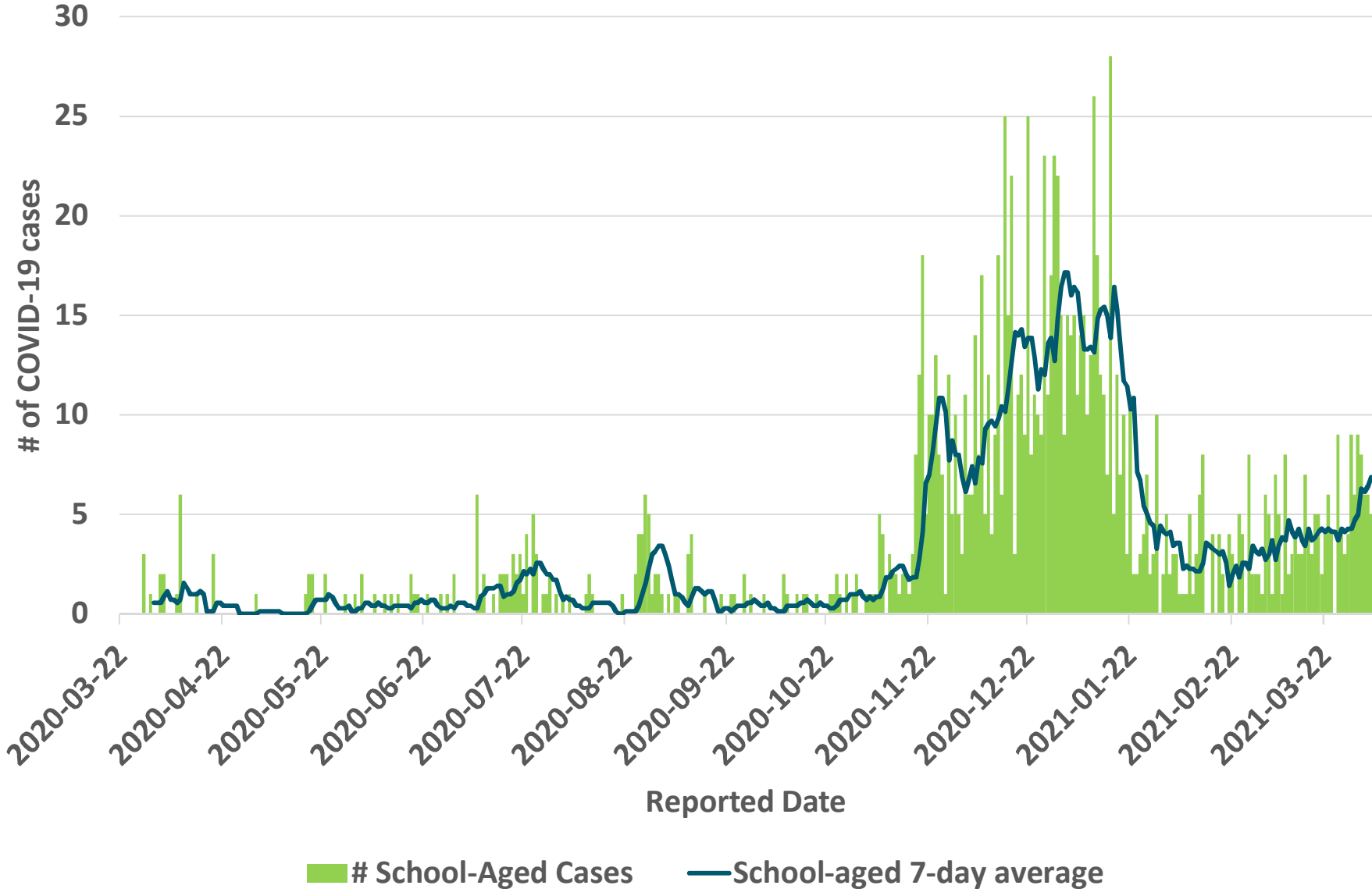
2021-04-06

Percent Positivity by School Aged (Mar-Apr)

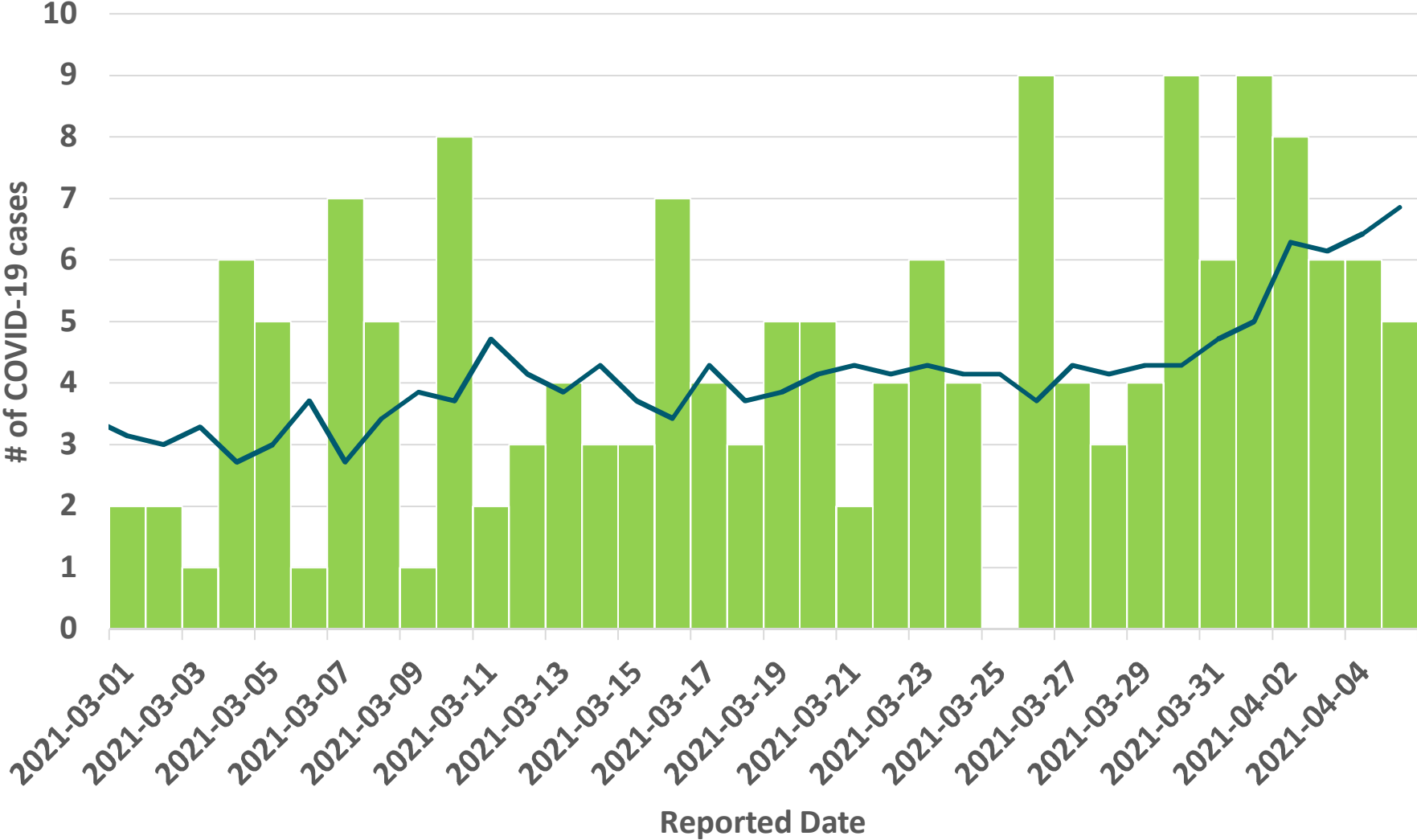


2021-04-06

School Aged Epidemic Curve in Windsor-Essex



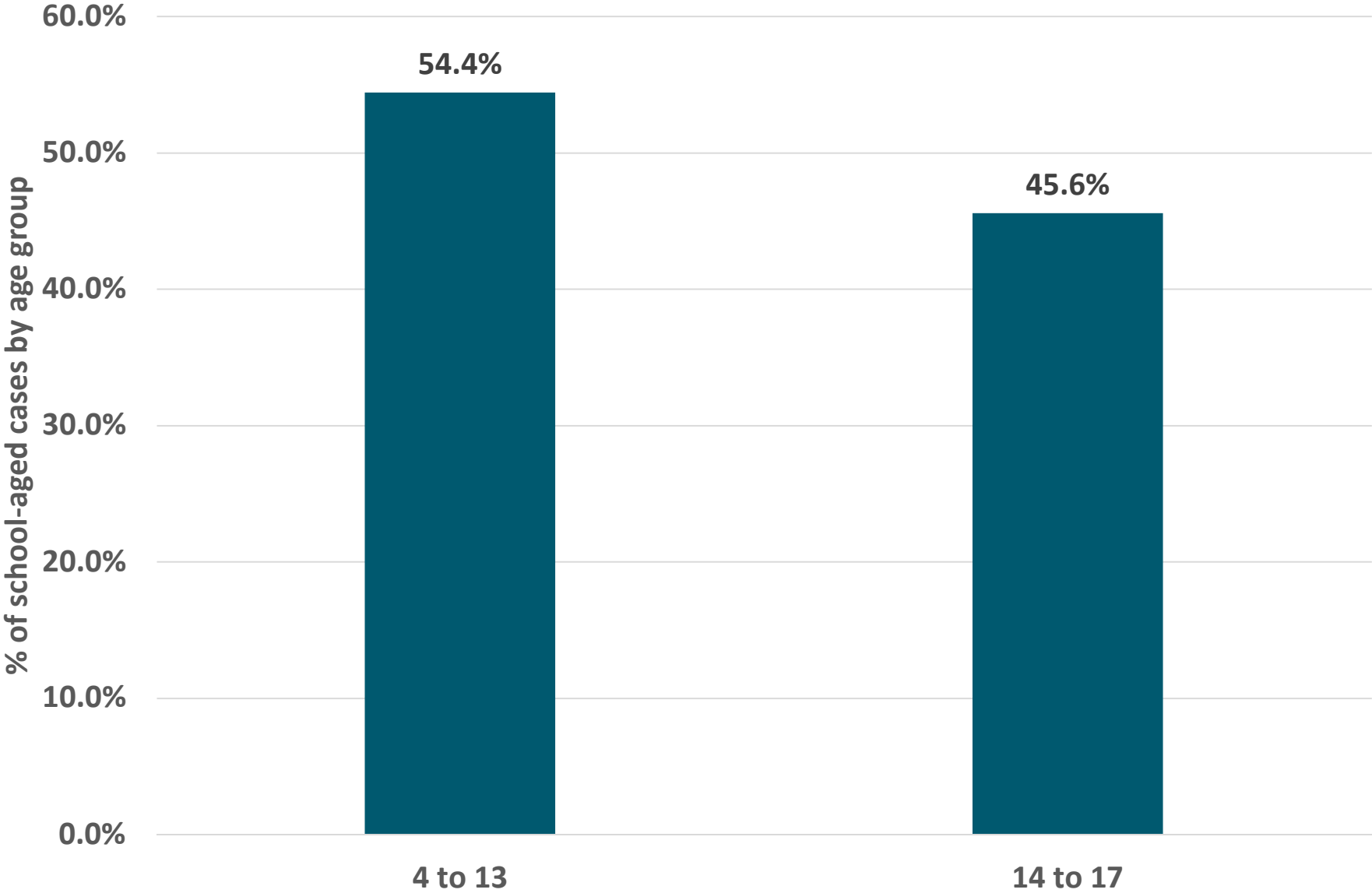
School Aged Epidemic Curve in Windsor-Essex (Mar-Apr)



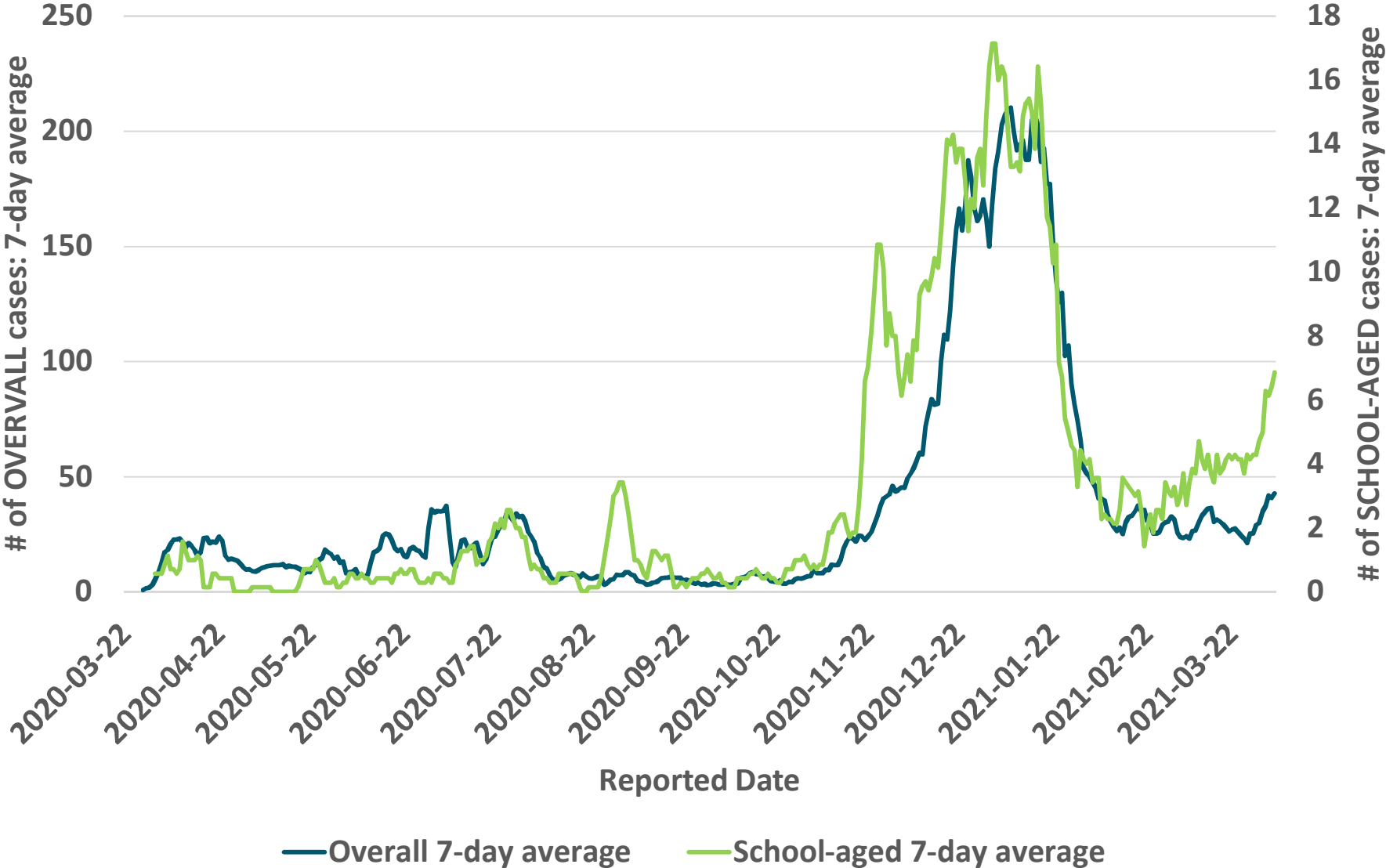
School-Aged Cases School-aged 7-day average

2021-04-06

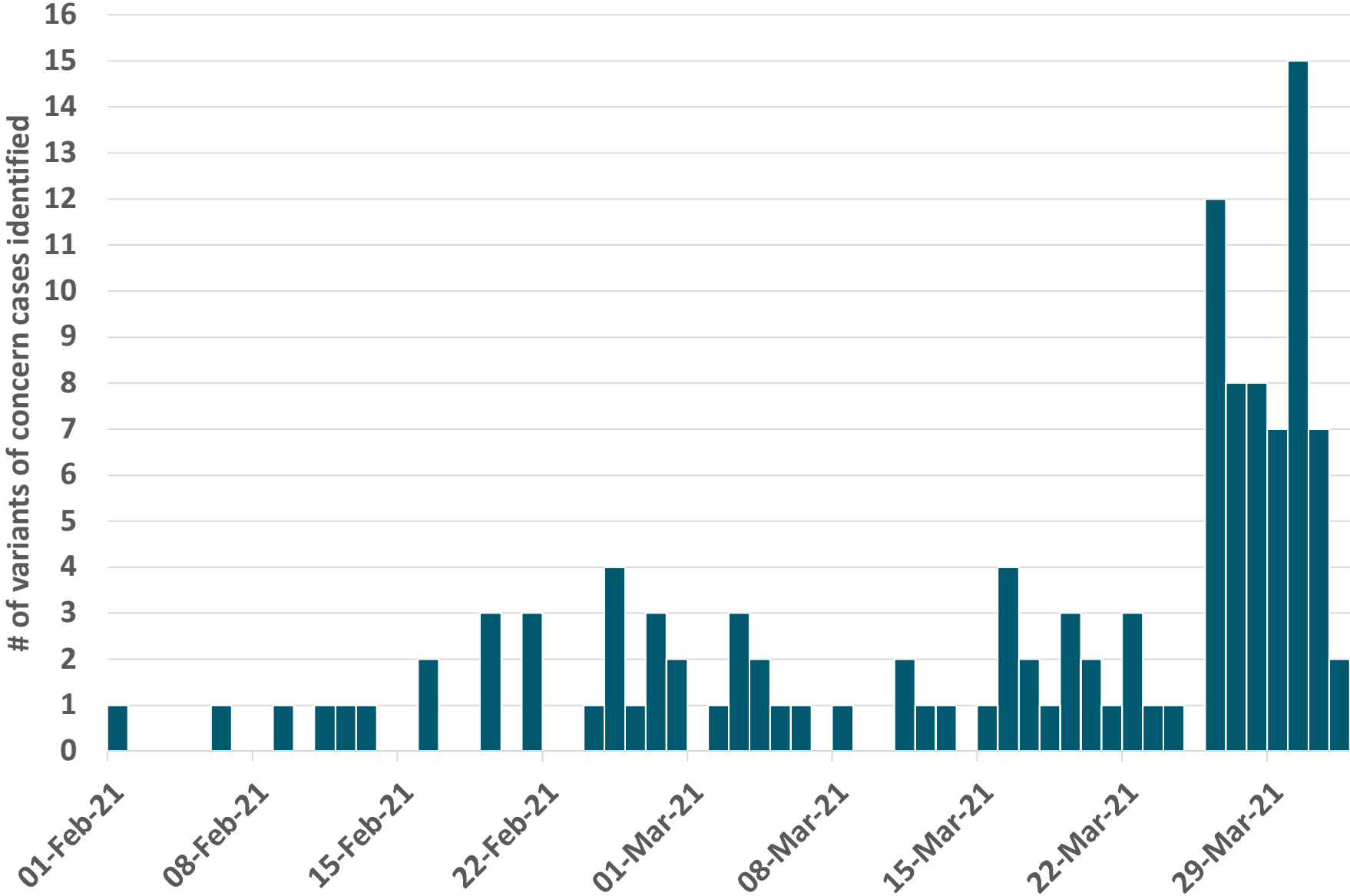
Breakdown of School-Aged Children by Age Group (March 23 to April 5)



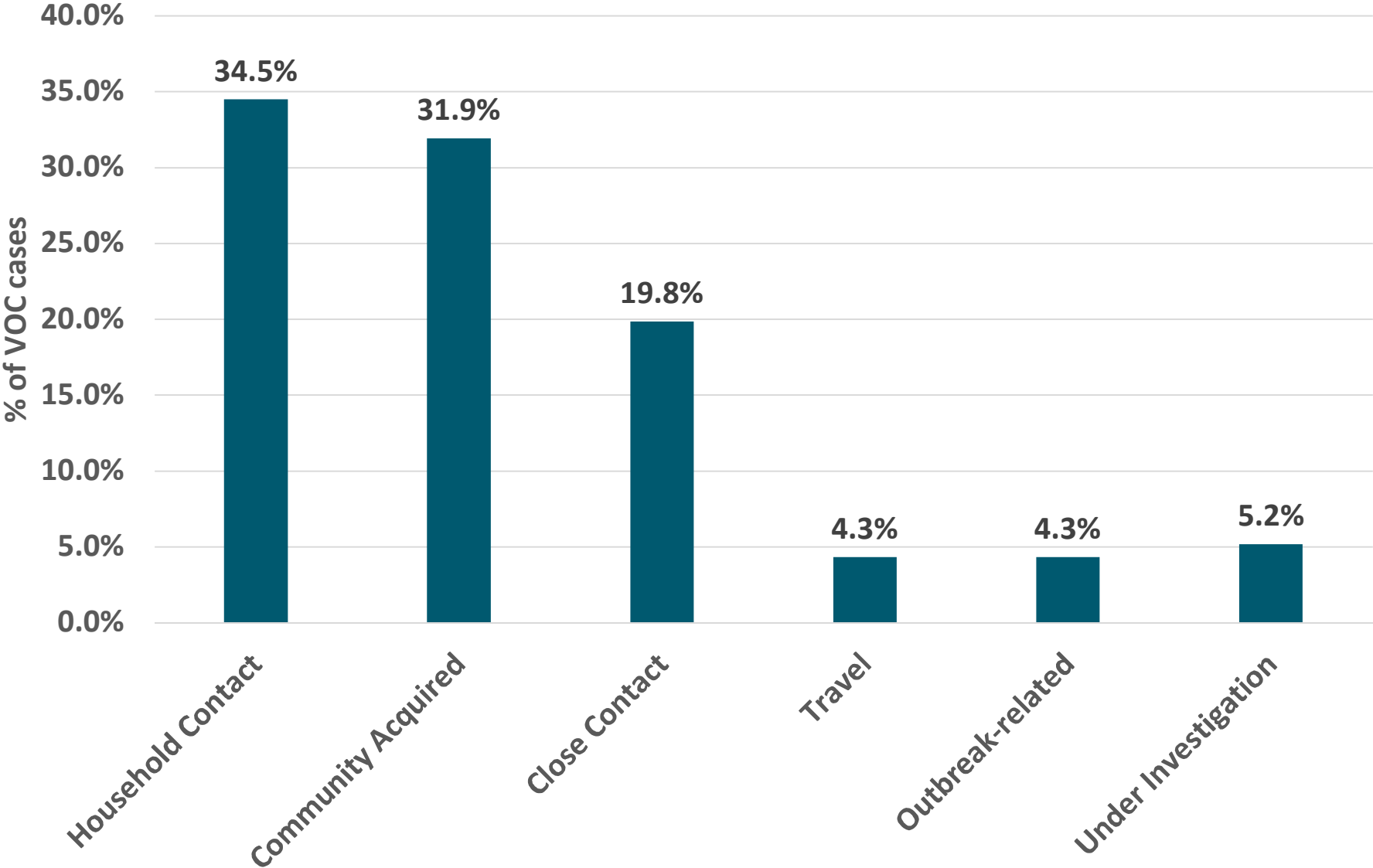
7-Day Average Comparison: School Aged vs. Overall



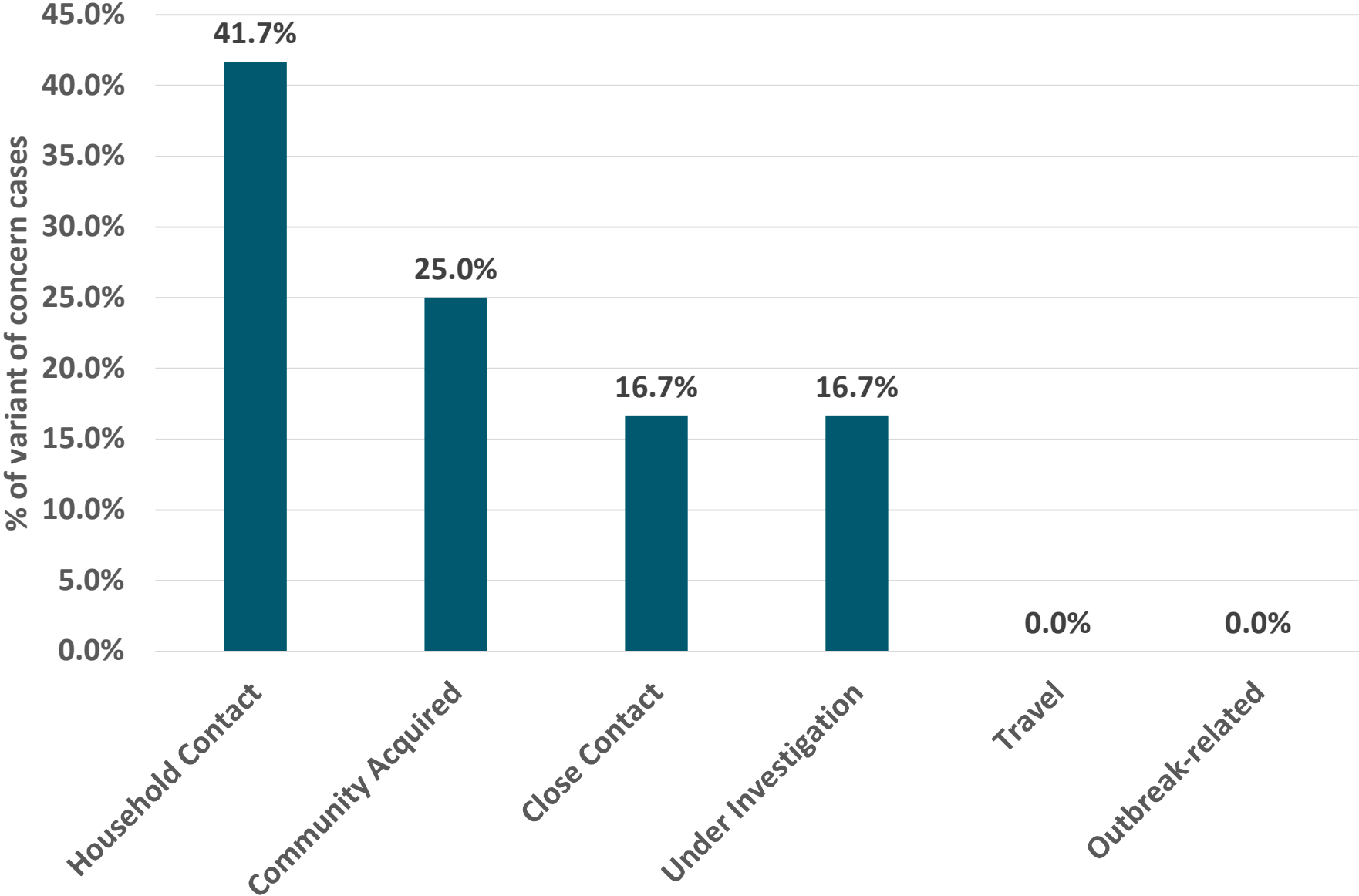
Variants of Concern – Epidemic Curve by Reported Date



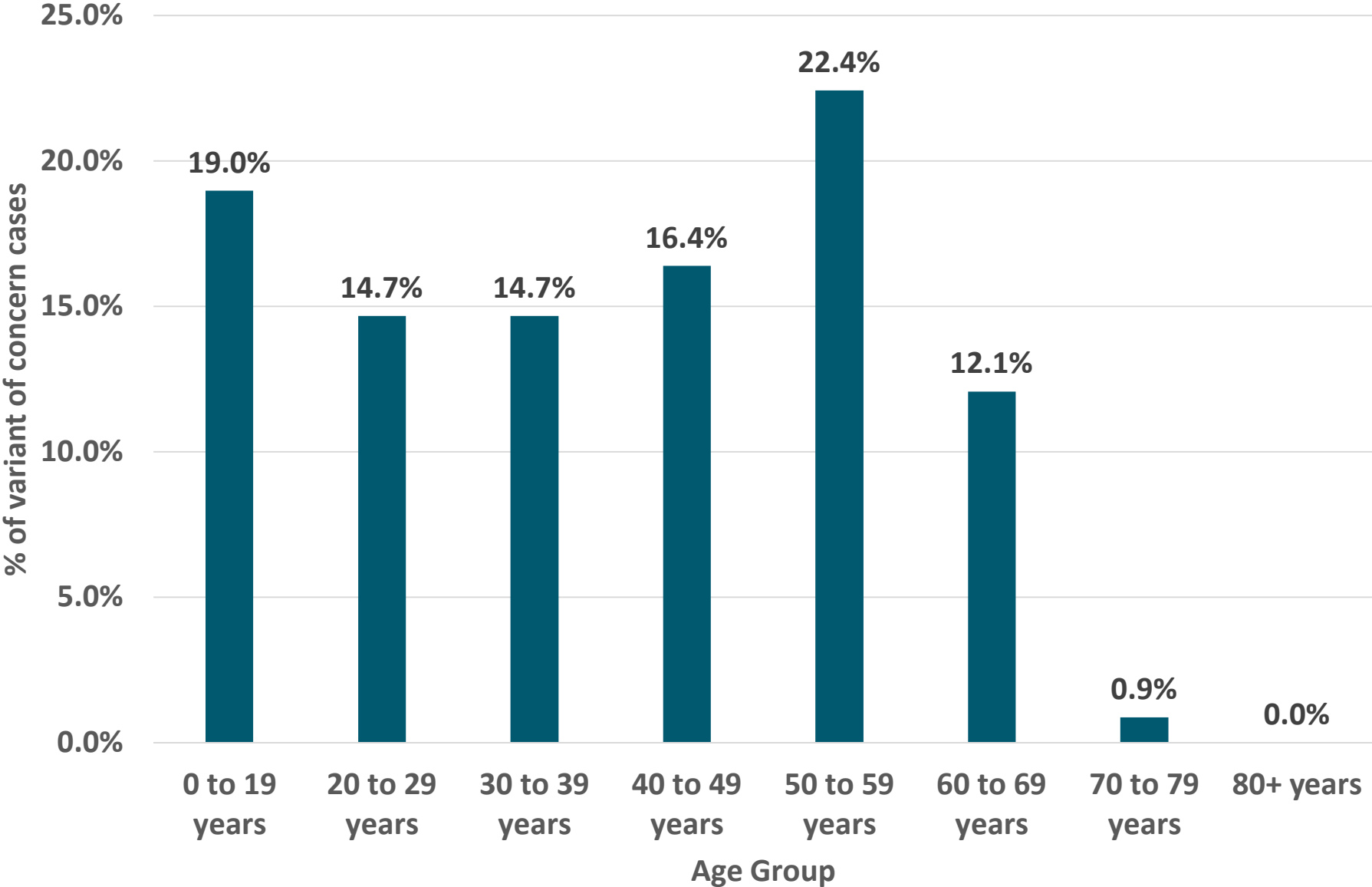
Variants of Concern – Source of Acquisition



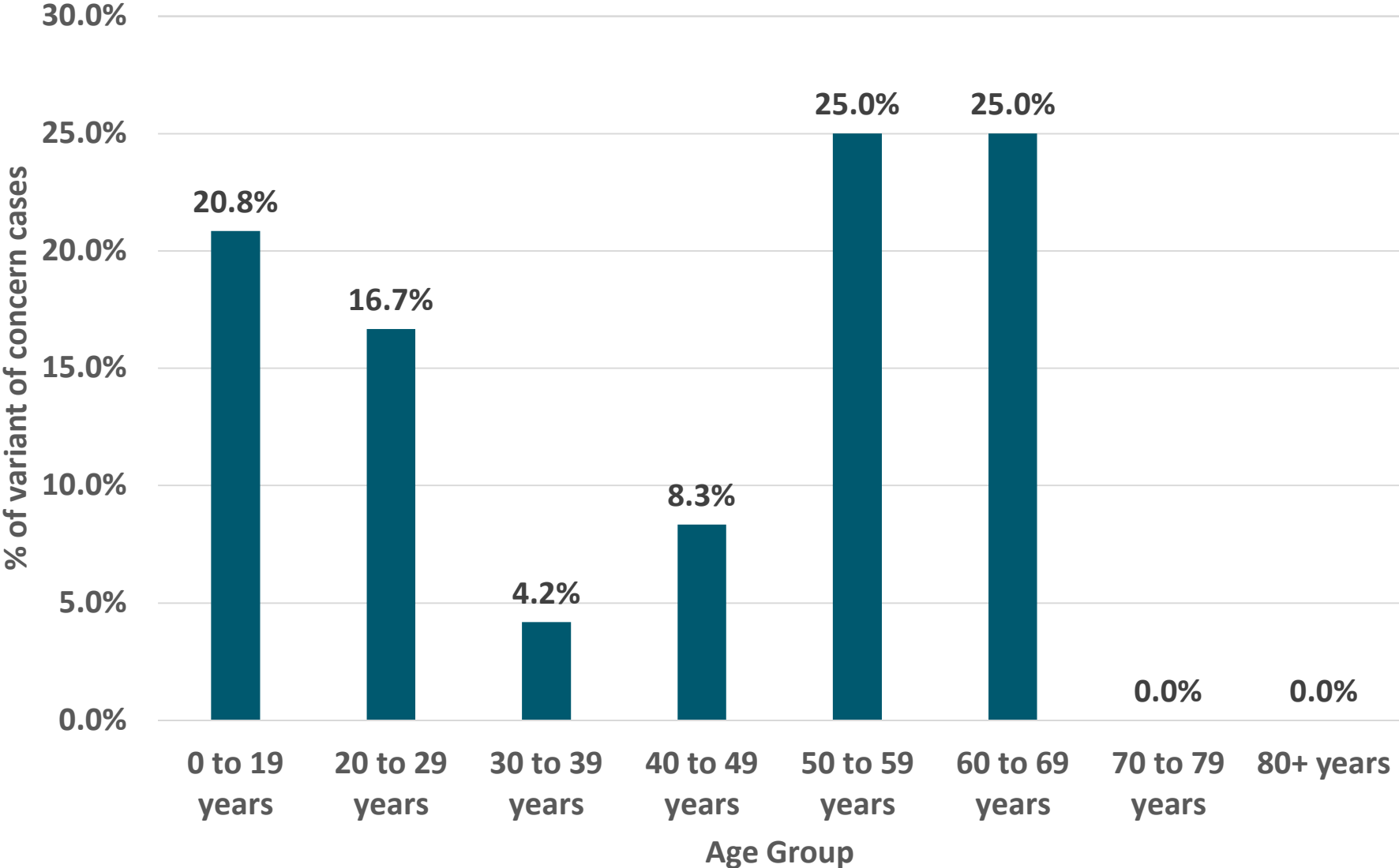
Variant of Concern Cases (March 30 to April 5)



Variant of Concern Cases by Age



Variant of Concern Cases by Age (March 30 to April 5)



Doubling Time (Day over Day Comparison)

