



COVID-19 *LIVE UPDATE*

September 11, 2020

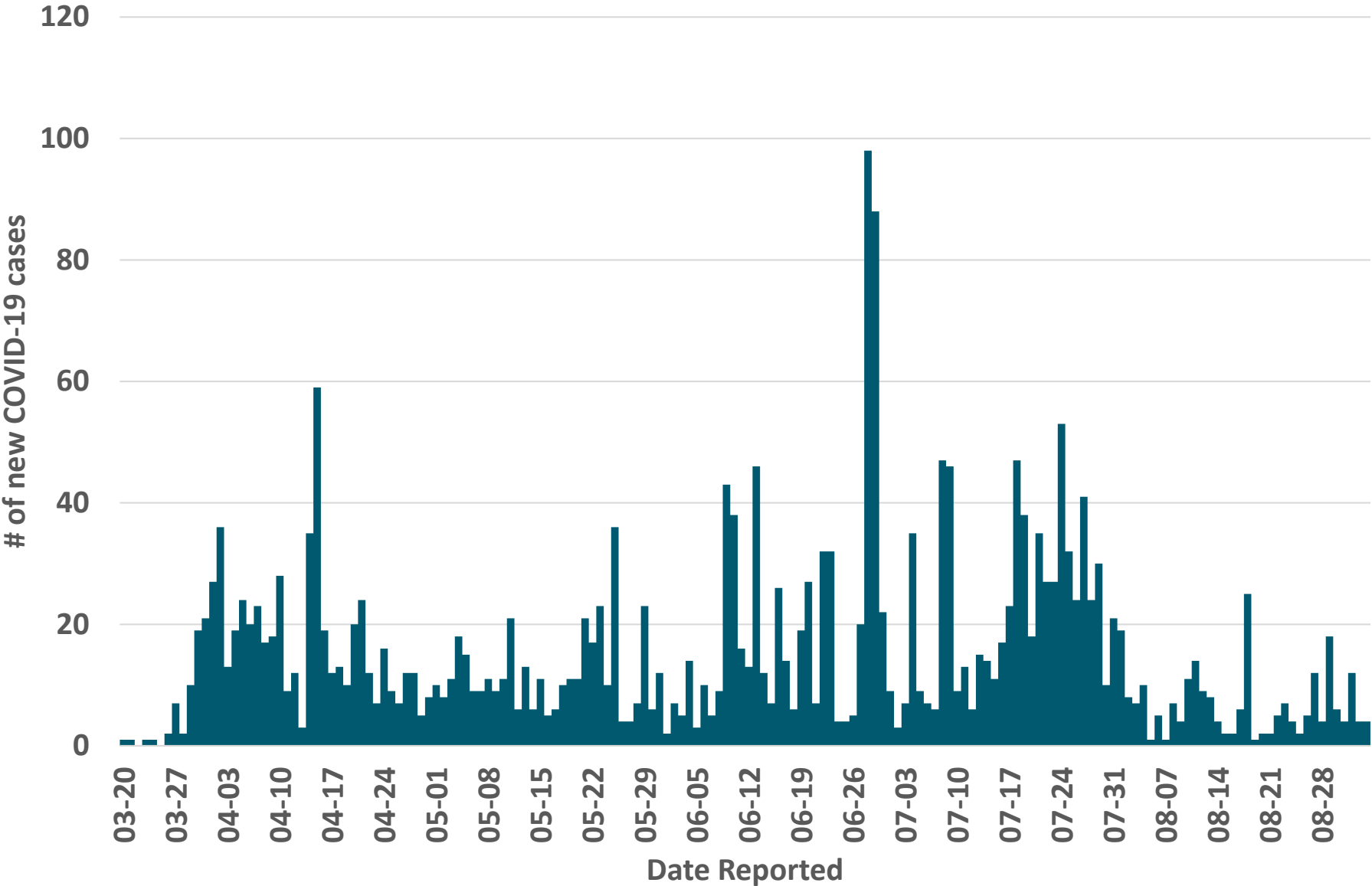
FOR UP-TO-DATE
CASE NUMBERS
VISIT
wechu.org

COVID-19 Epidemiological Summary

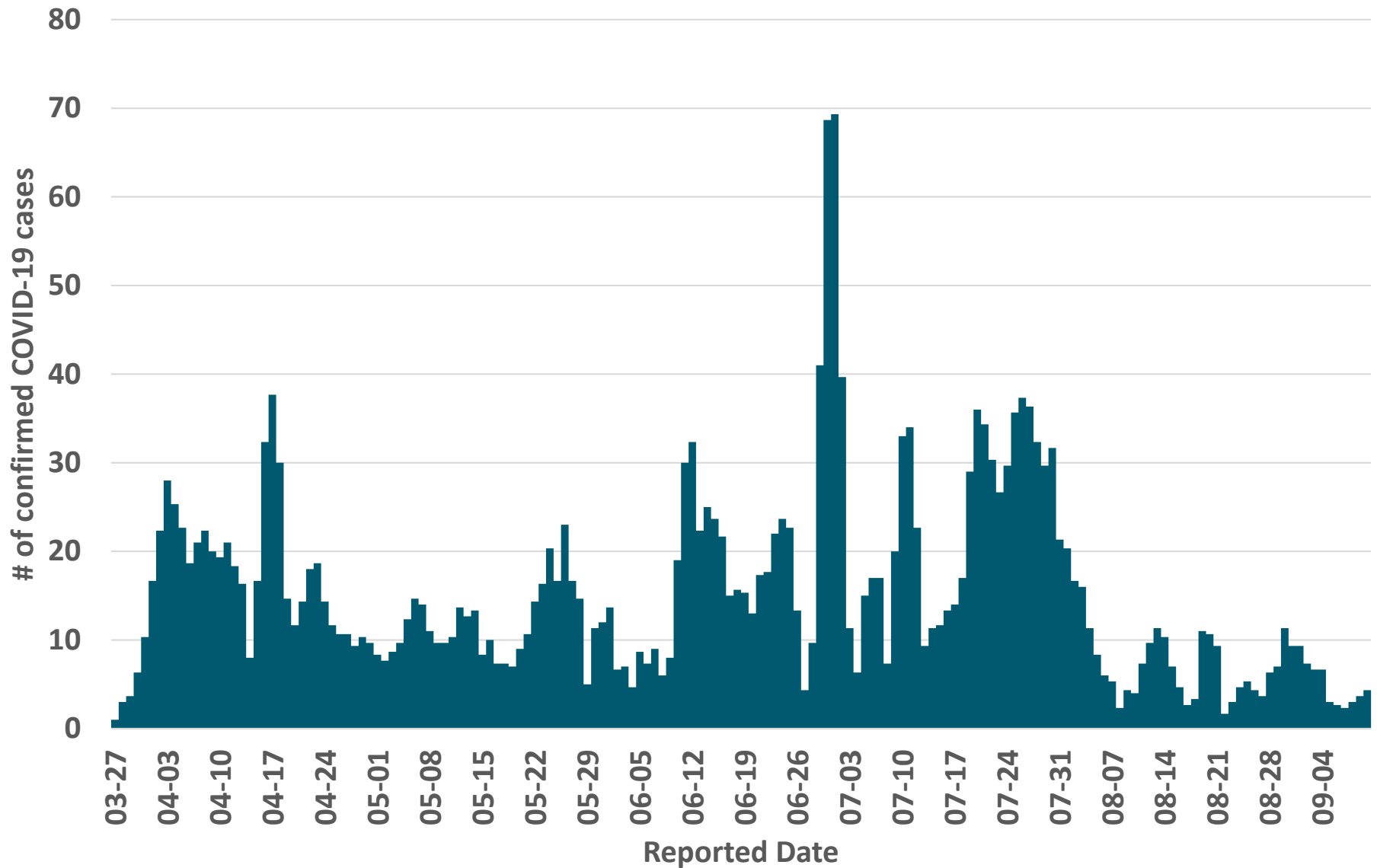
Content covered:

- Epidemic curves
- Syndromic surveillance
- Regional & provincial rates
- Percent positivity
- Positive test turnaround time
- Case investigation time
- Age & sex distribution
- Geographical rates & distribution of cases
- Exposure history
- Healthcare worker status
- Hospitalizations & ICU
- Healthcare system capacity
- Current outcomes
- Breakdown by deaths
- Doubling time
- Mean R_0 (effective)

Epidemic Curve by Reported Date

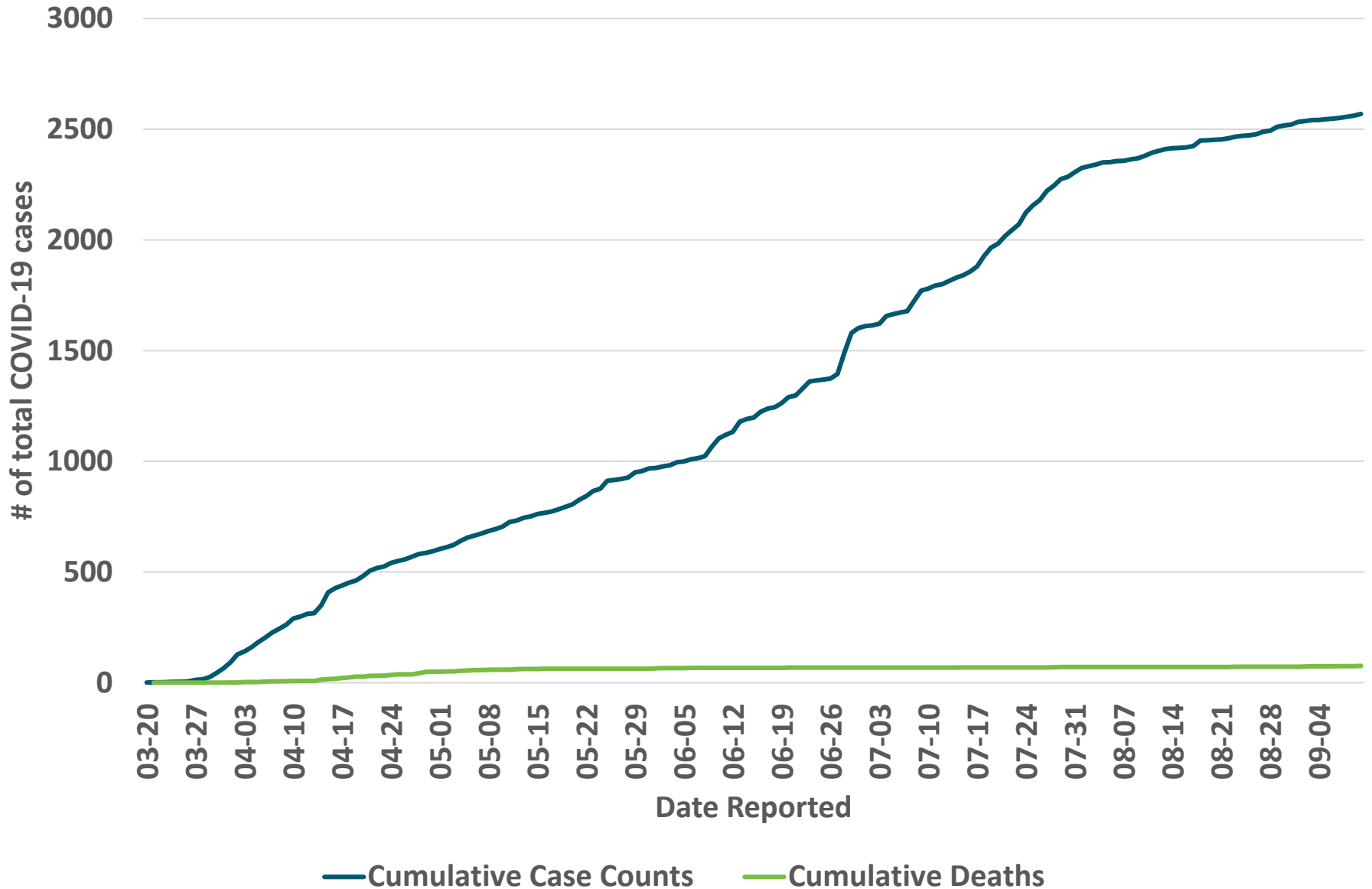


Epidemic Curve by 3-Day Moving Average by Reported Date



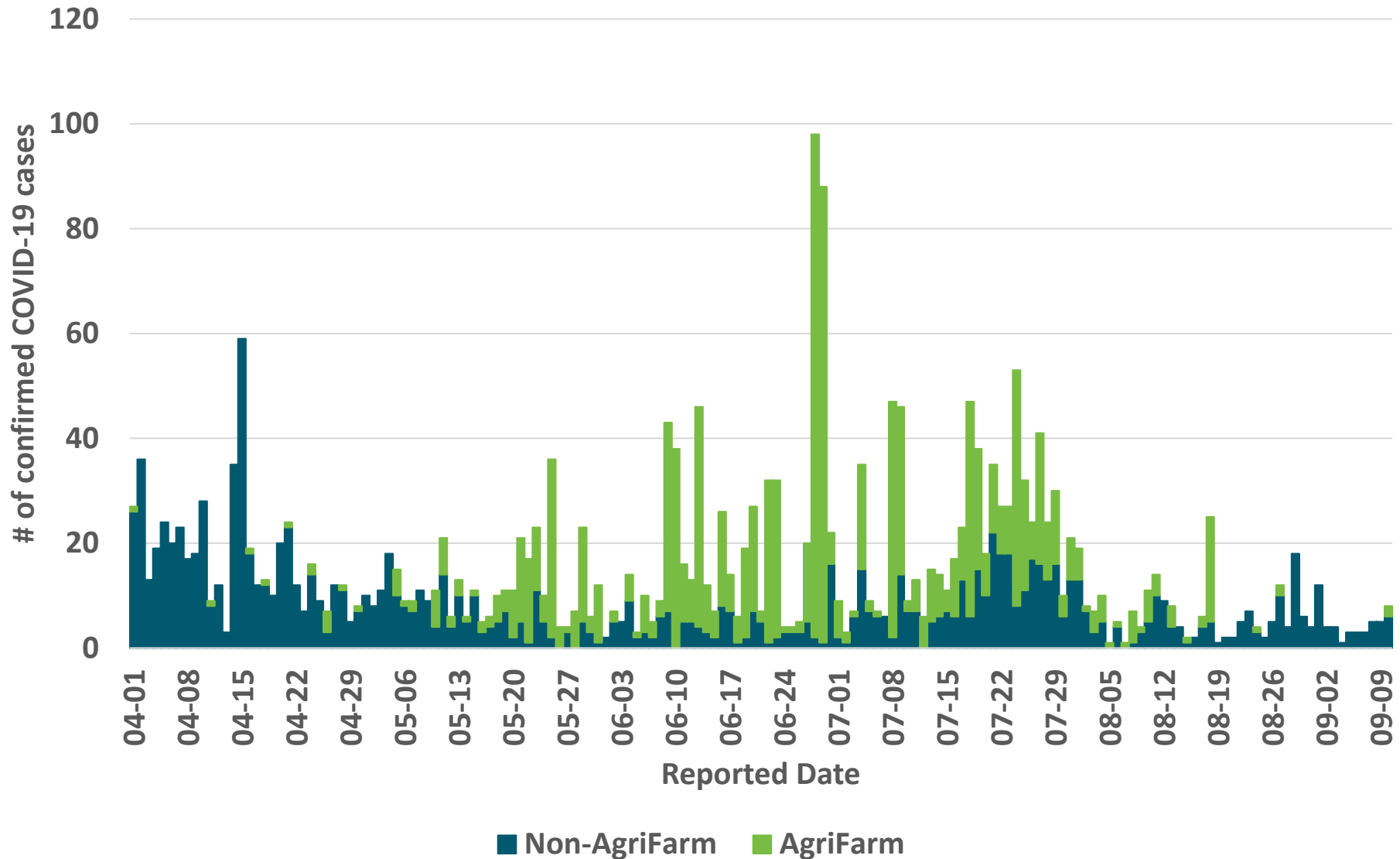
2020-09-15

Cumulative Cases and Deaths of COVID-19 in WEC

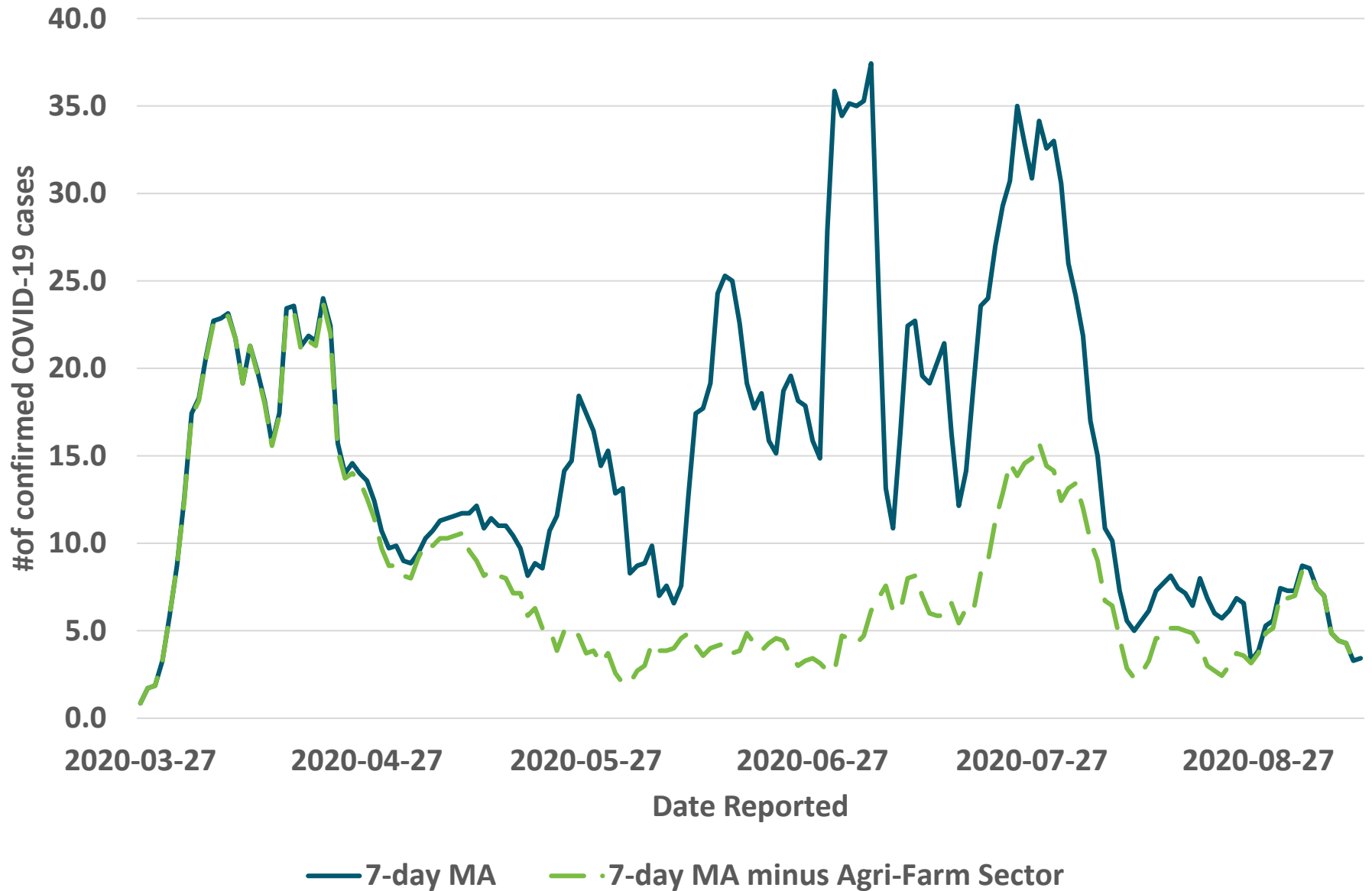


2020-09-15

Epidemic Curve by Agri-Farm Versus Non-Agri-Farm Cases by Reported Date

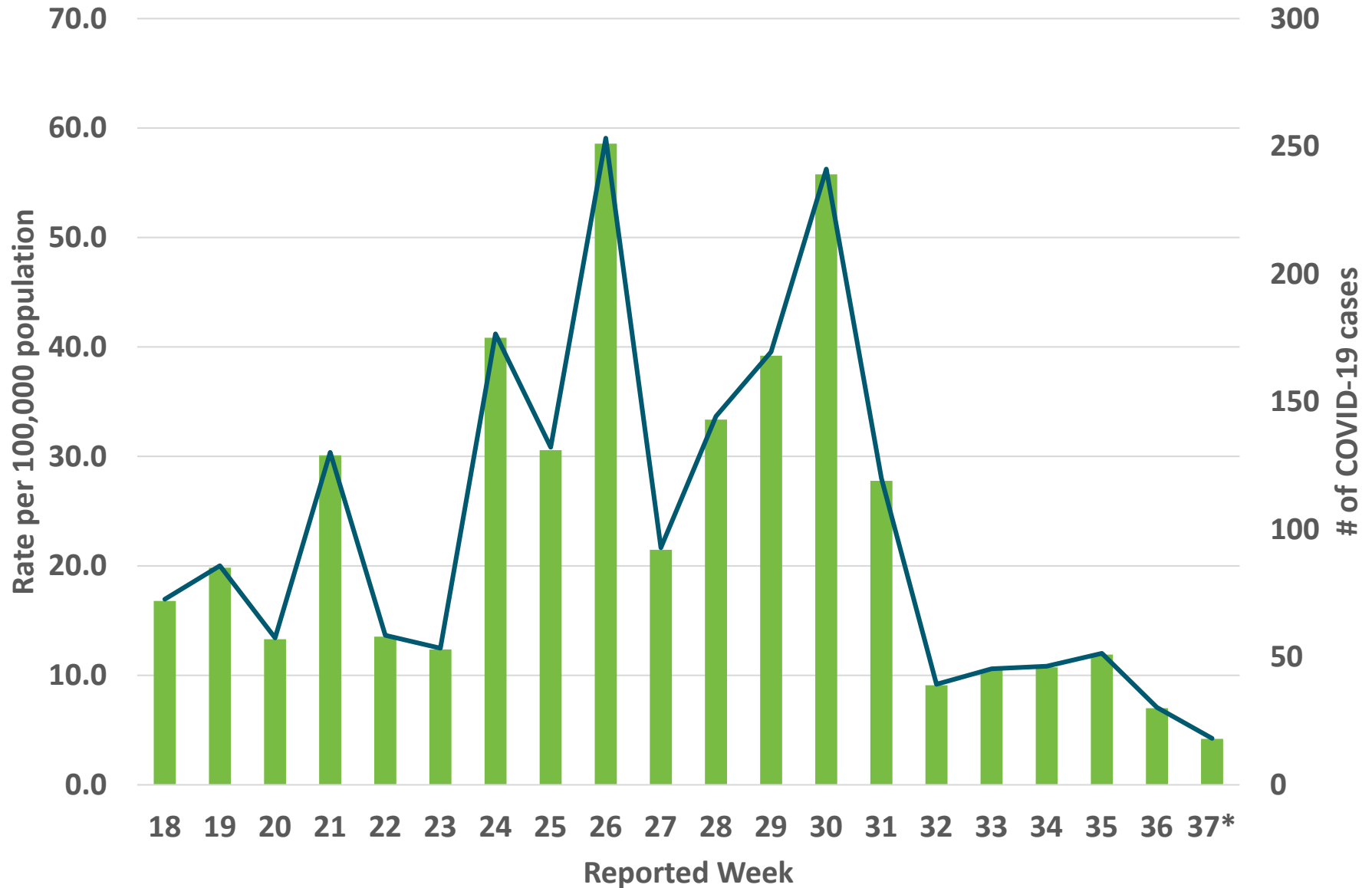


7-Day Moving Average by Reported Date

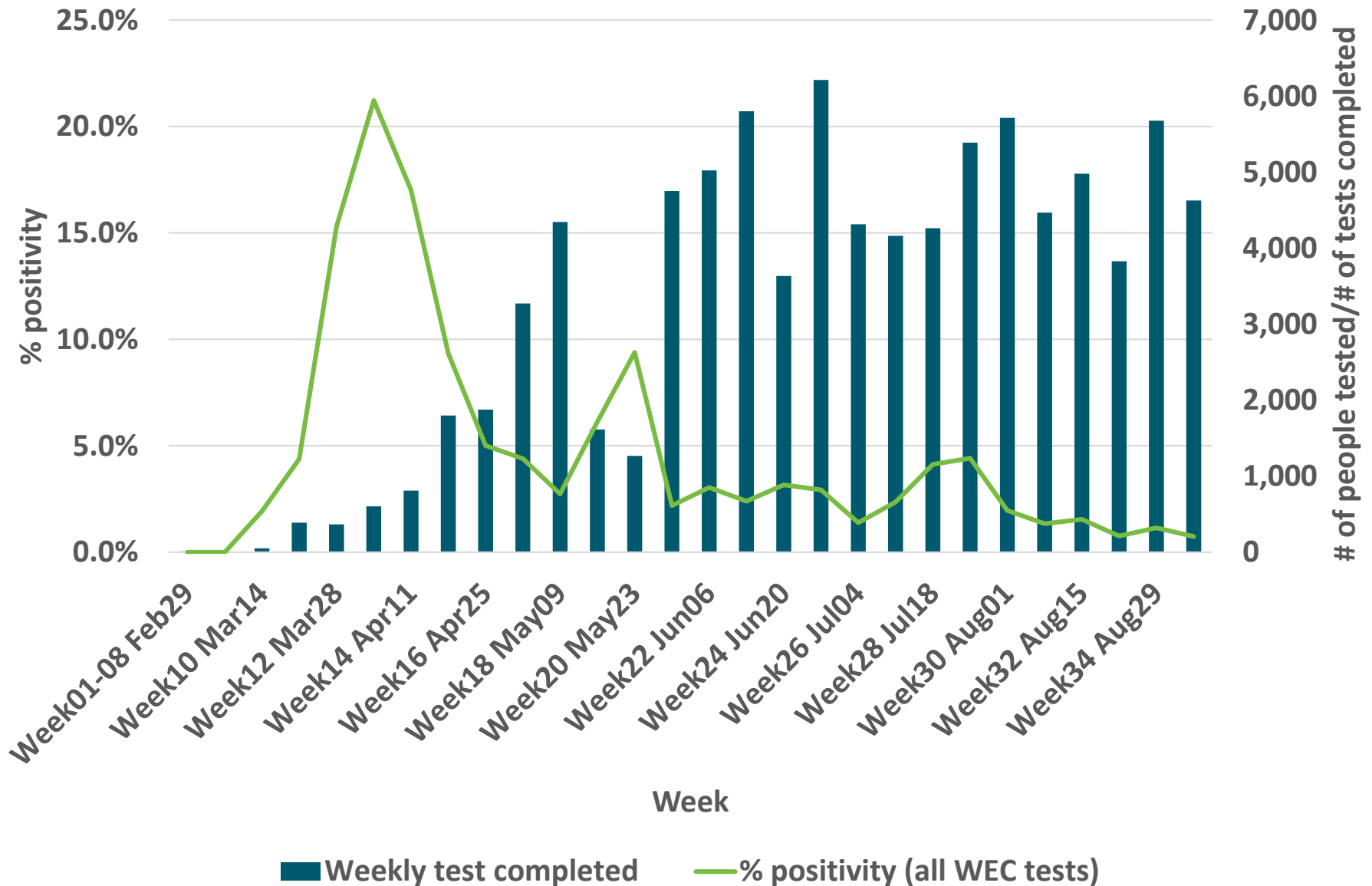


2020-09-15

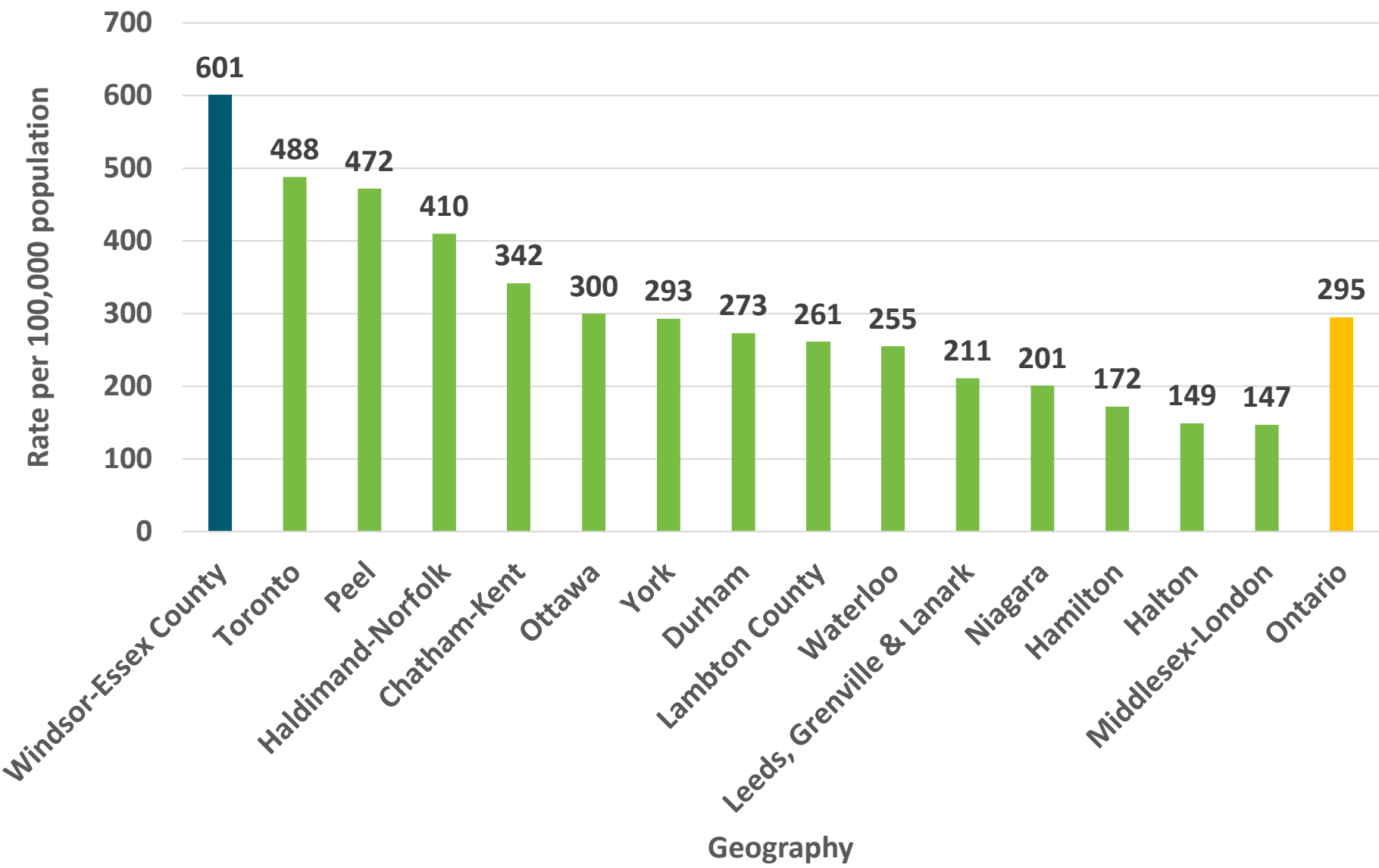
Windsor-Essex Rate by Reported Week



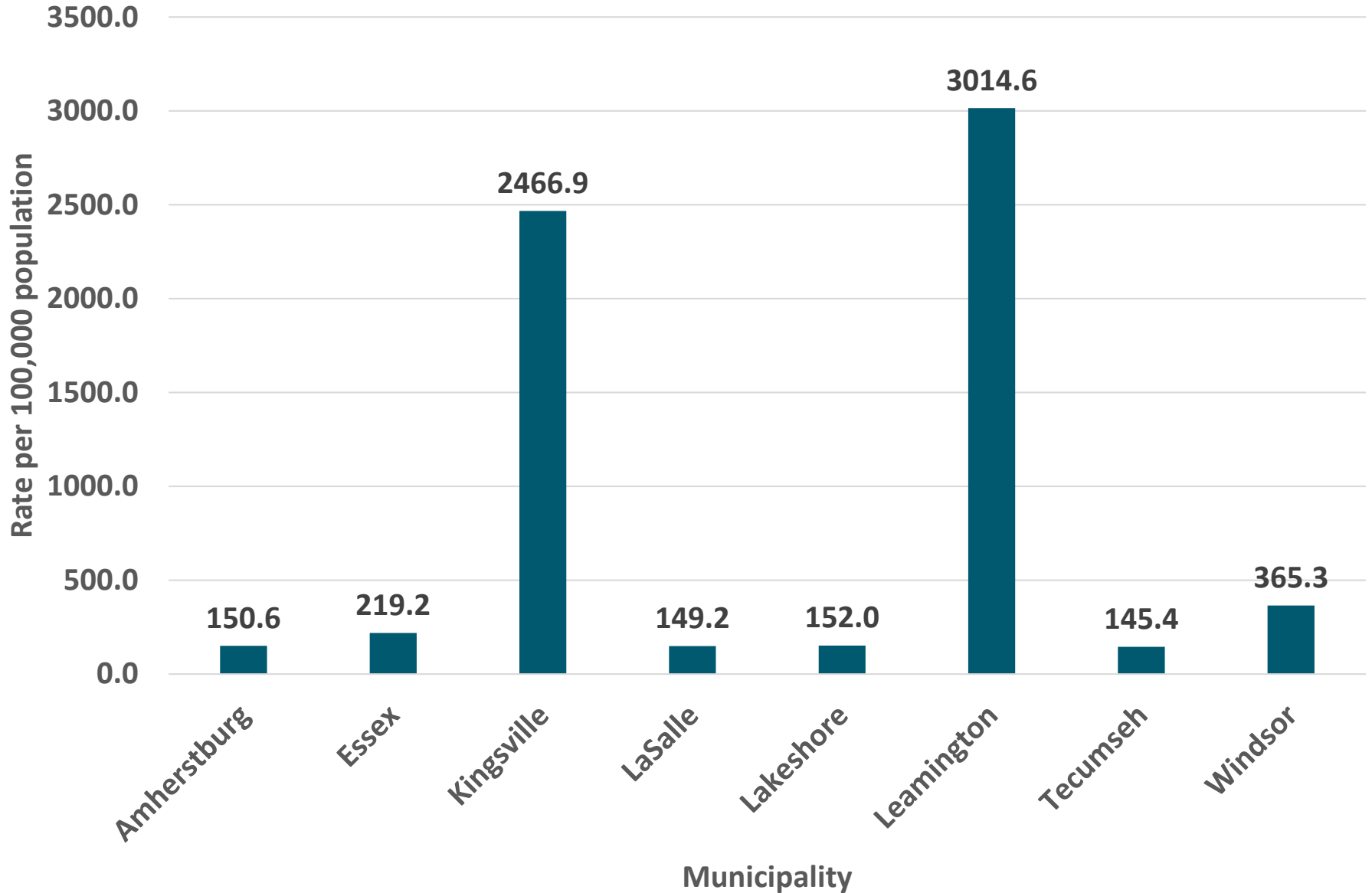
Percent Positivity by Week by All Tests



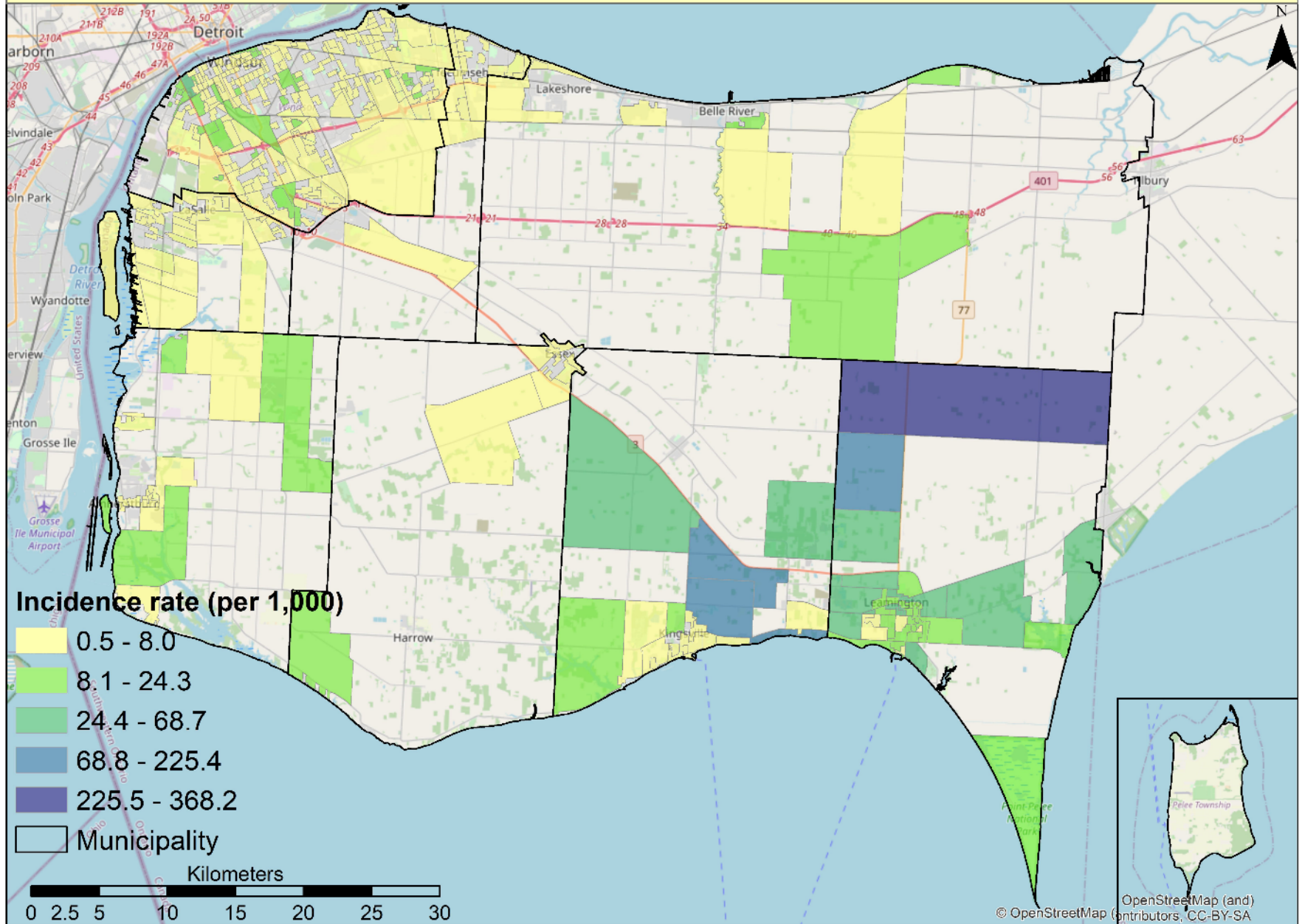
Regional & Provincial Rates



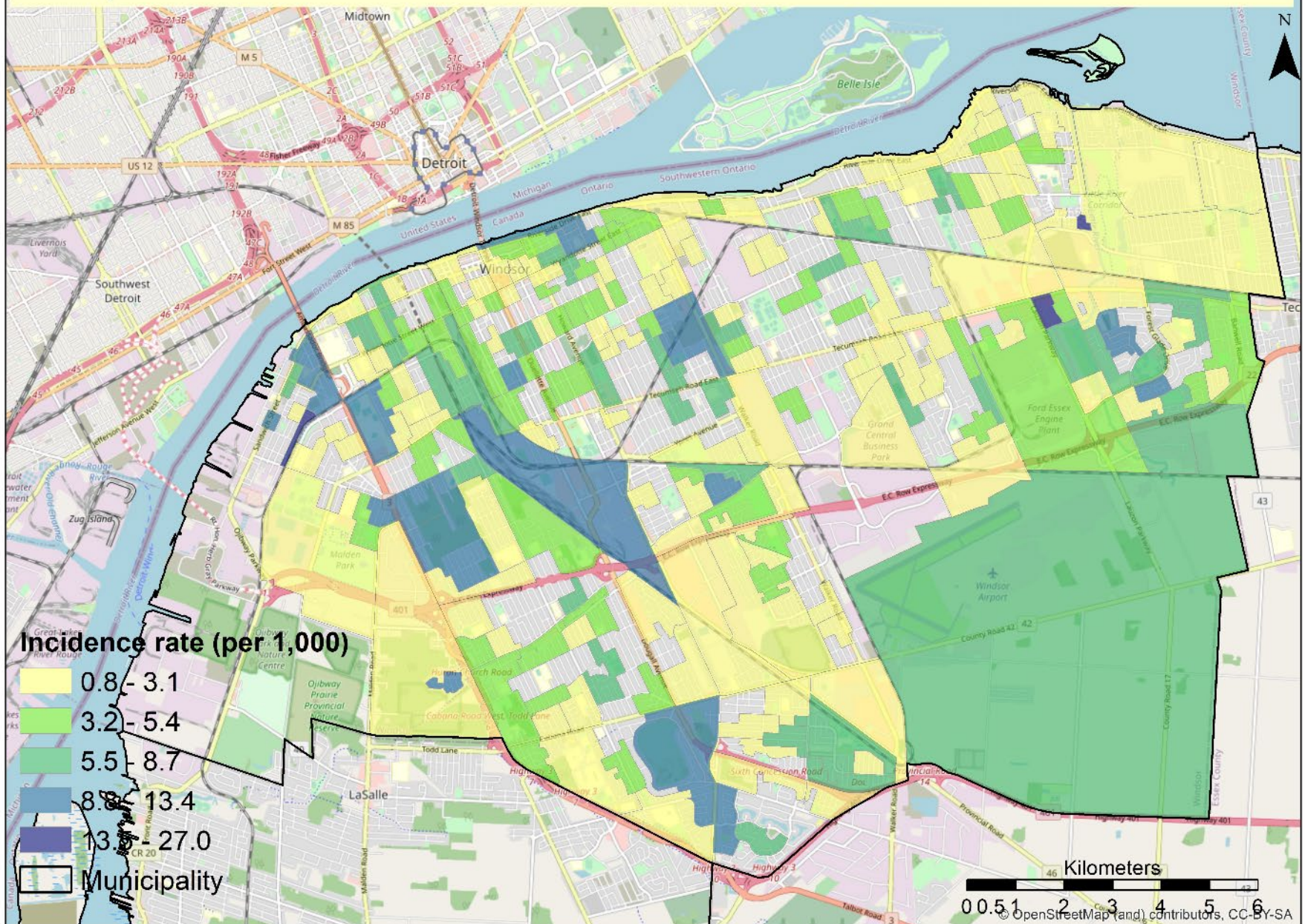
Rate per 100,000 by Municipality



Map of confirmed COVID-19 cases in WEC

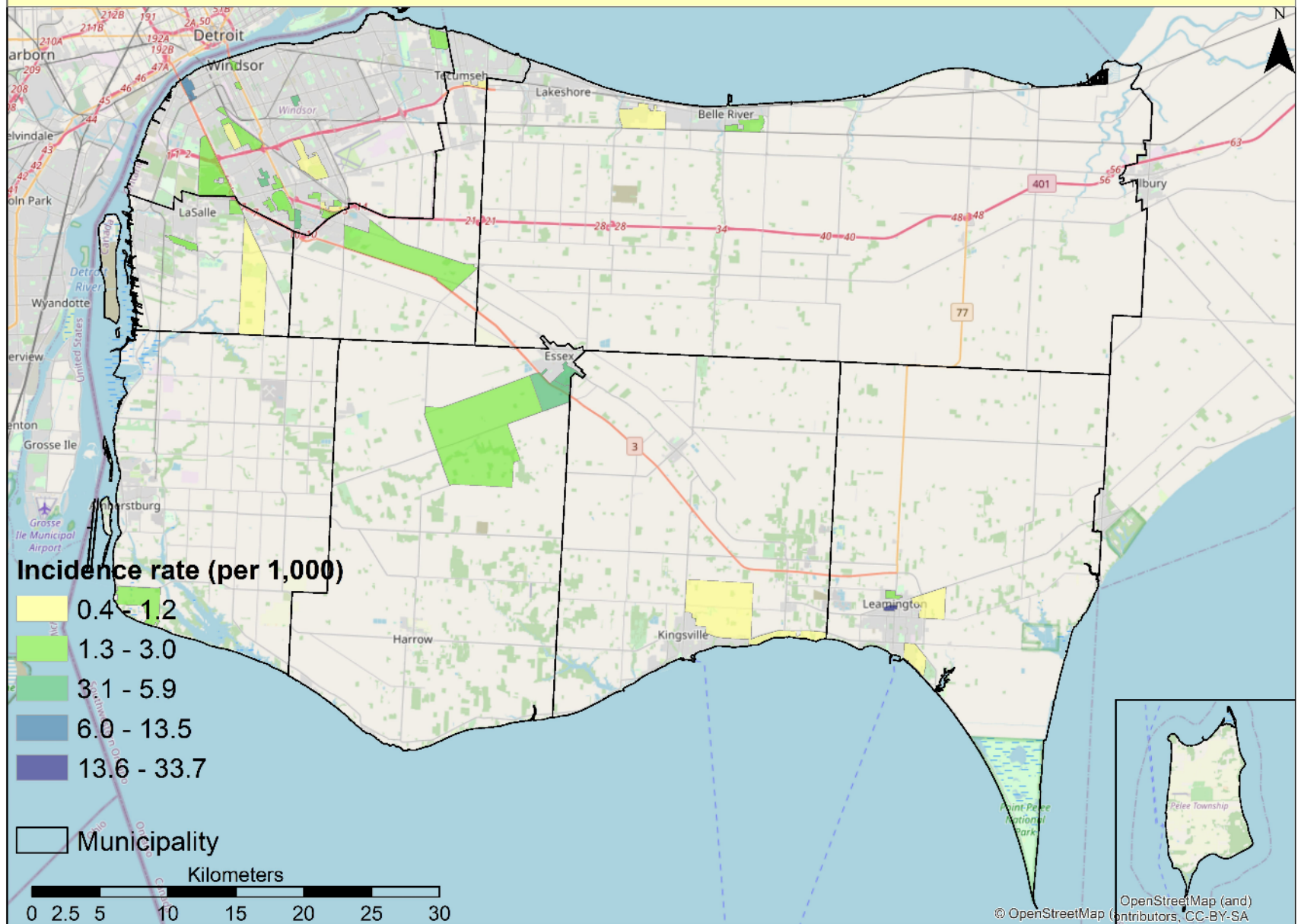


Map of confirmed COVID-19 cases in Windsor

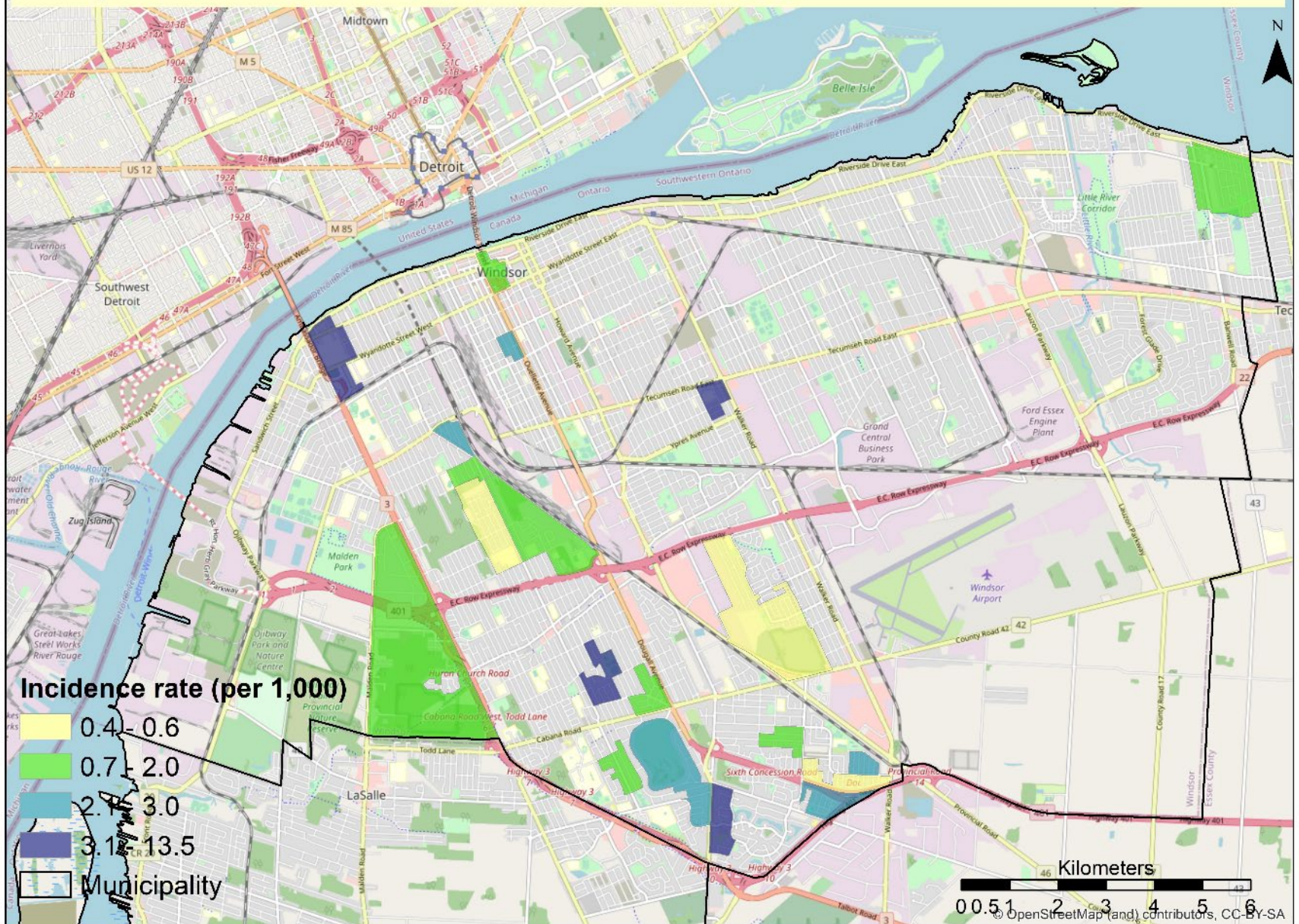


2020-09-15

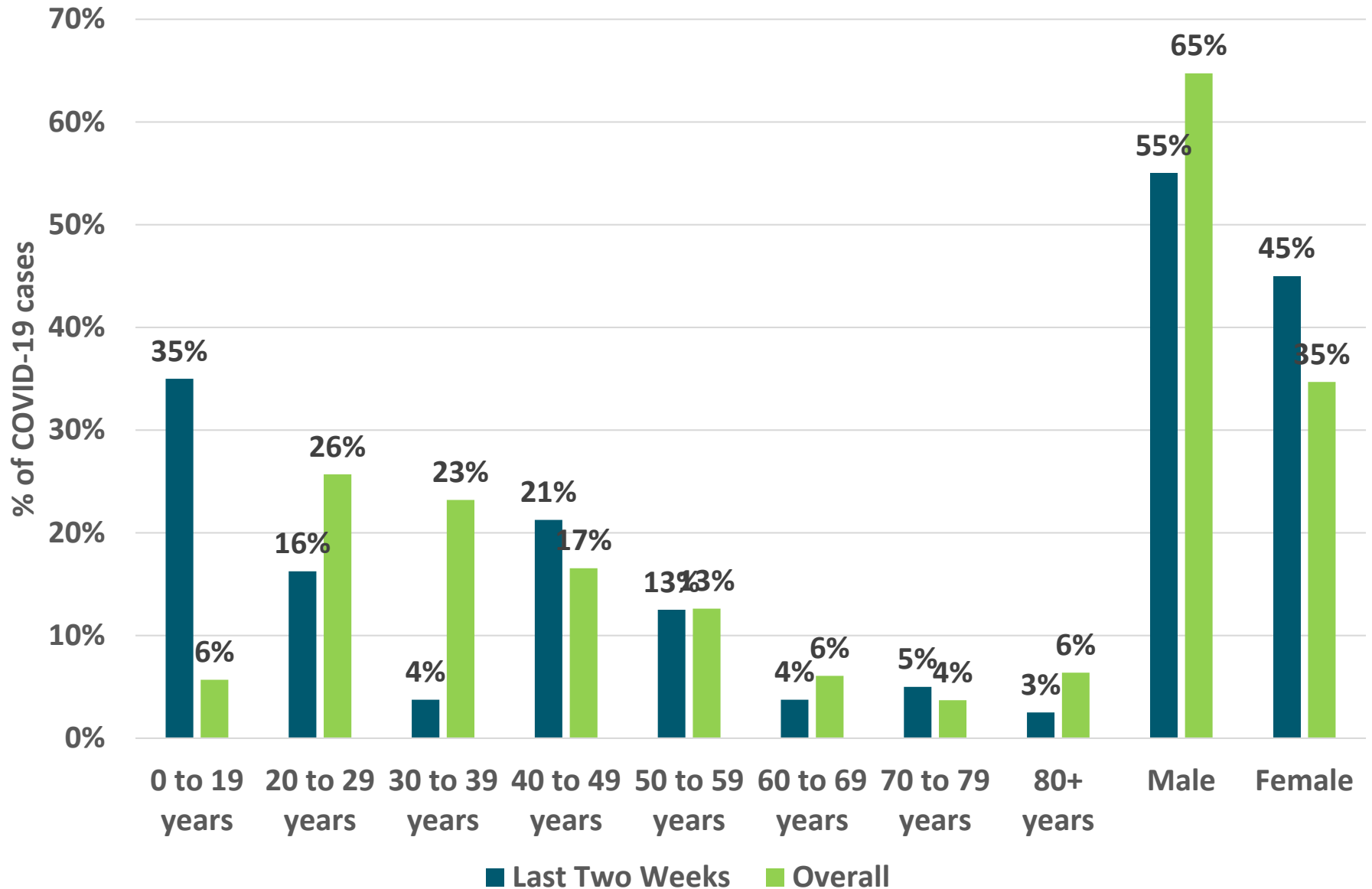
Map of confirmed active COVID-19 cases in WEC



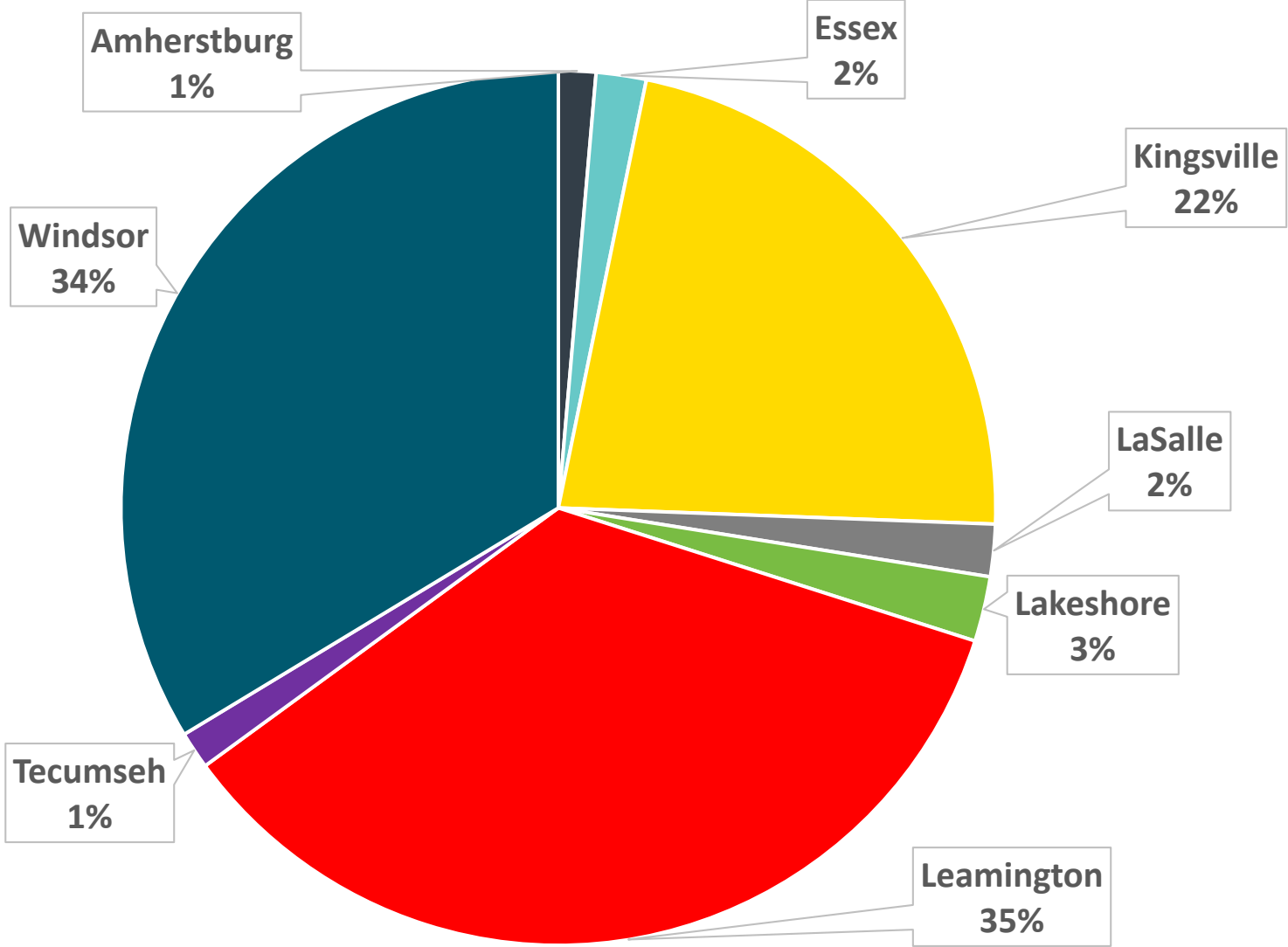
Map of confirmed active COVID-19 cases in Windsor



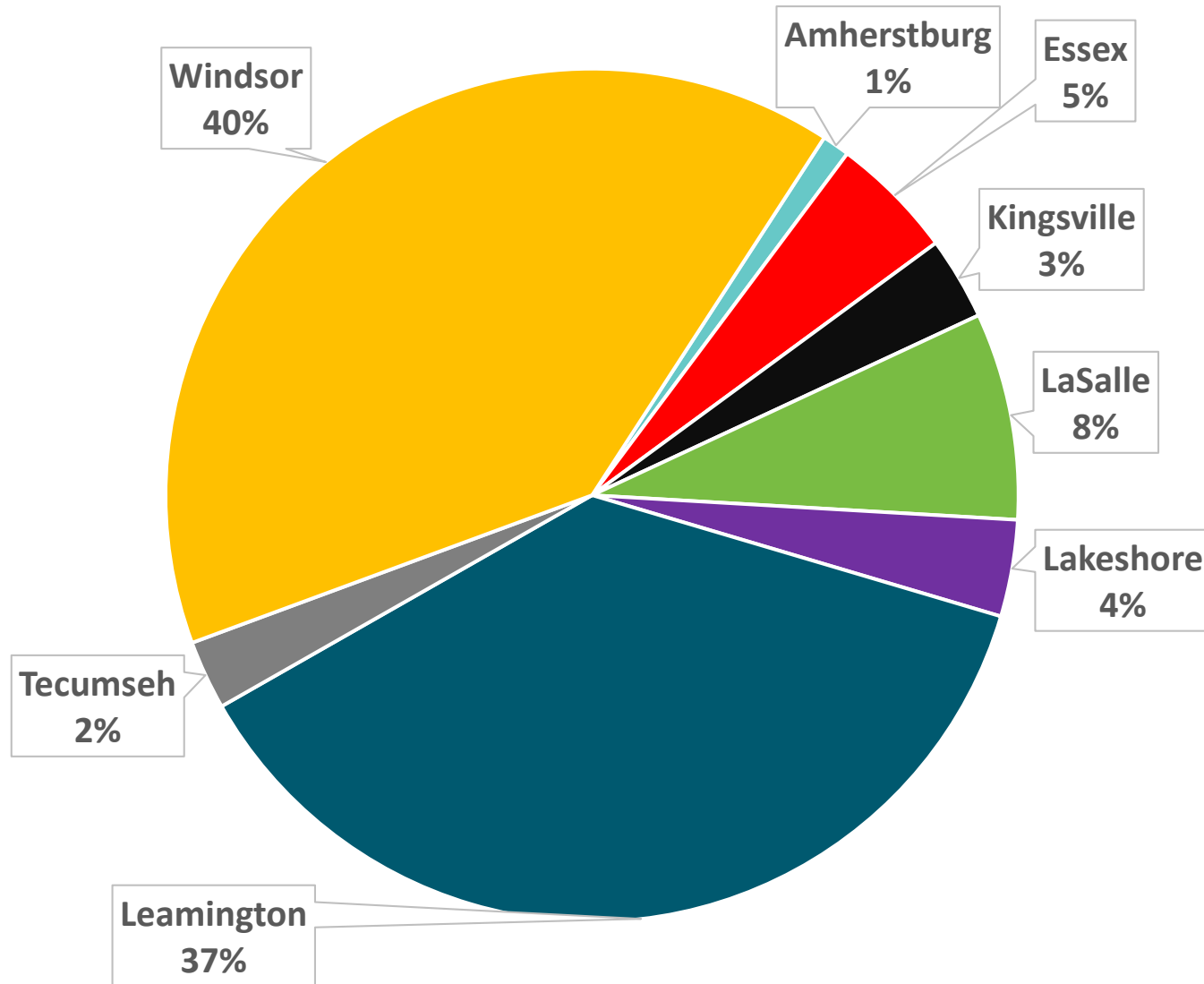
Age & Sex Distribution



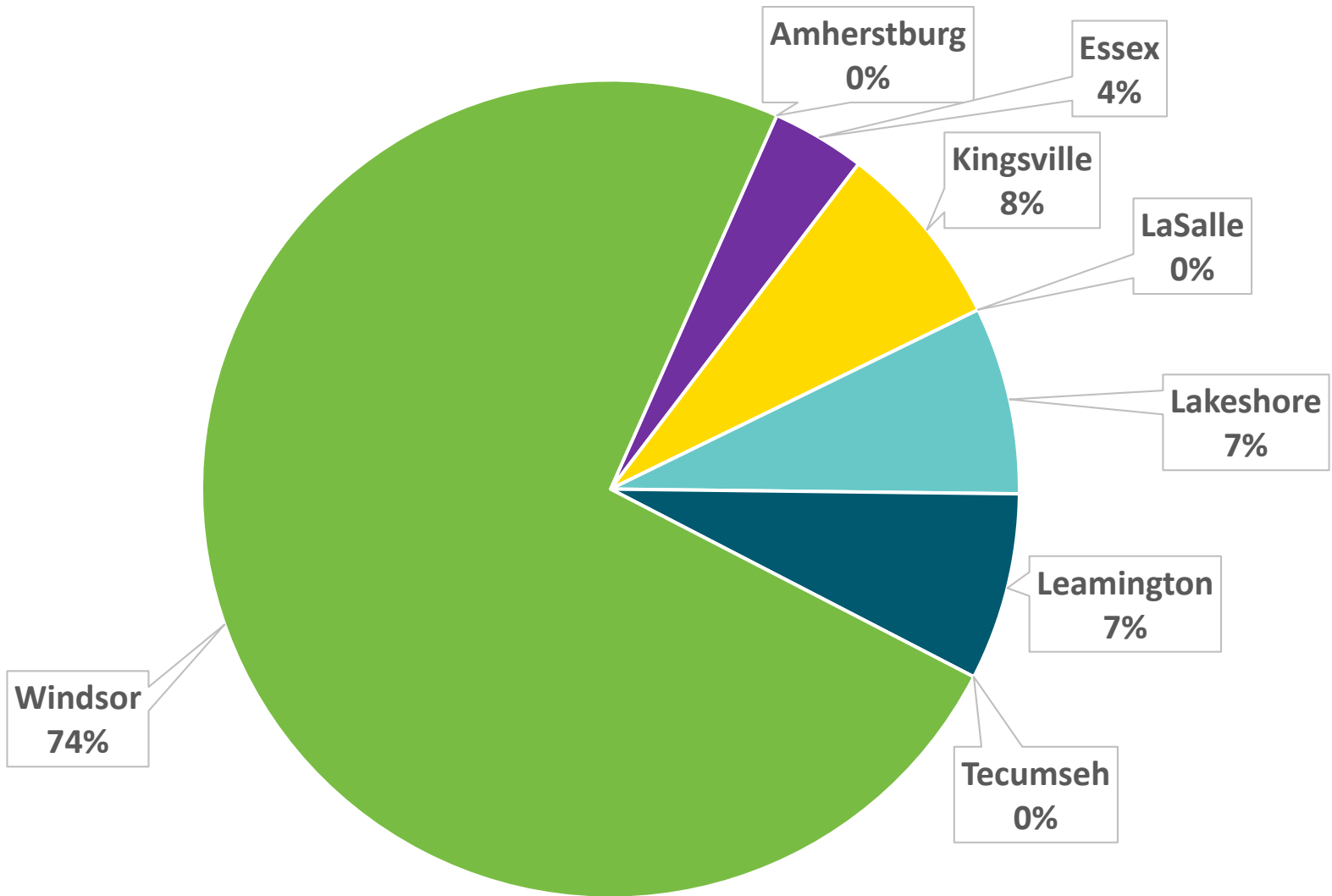
Distribution of COVID-19 Cases by Municipality



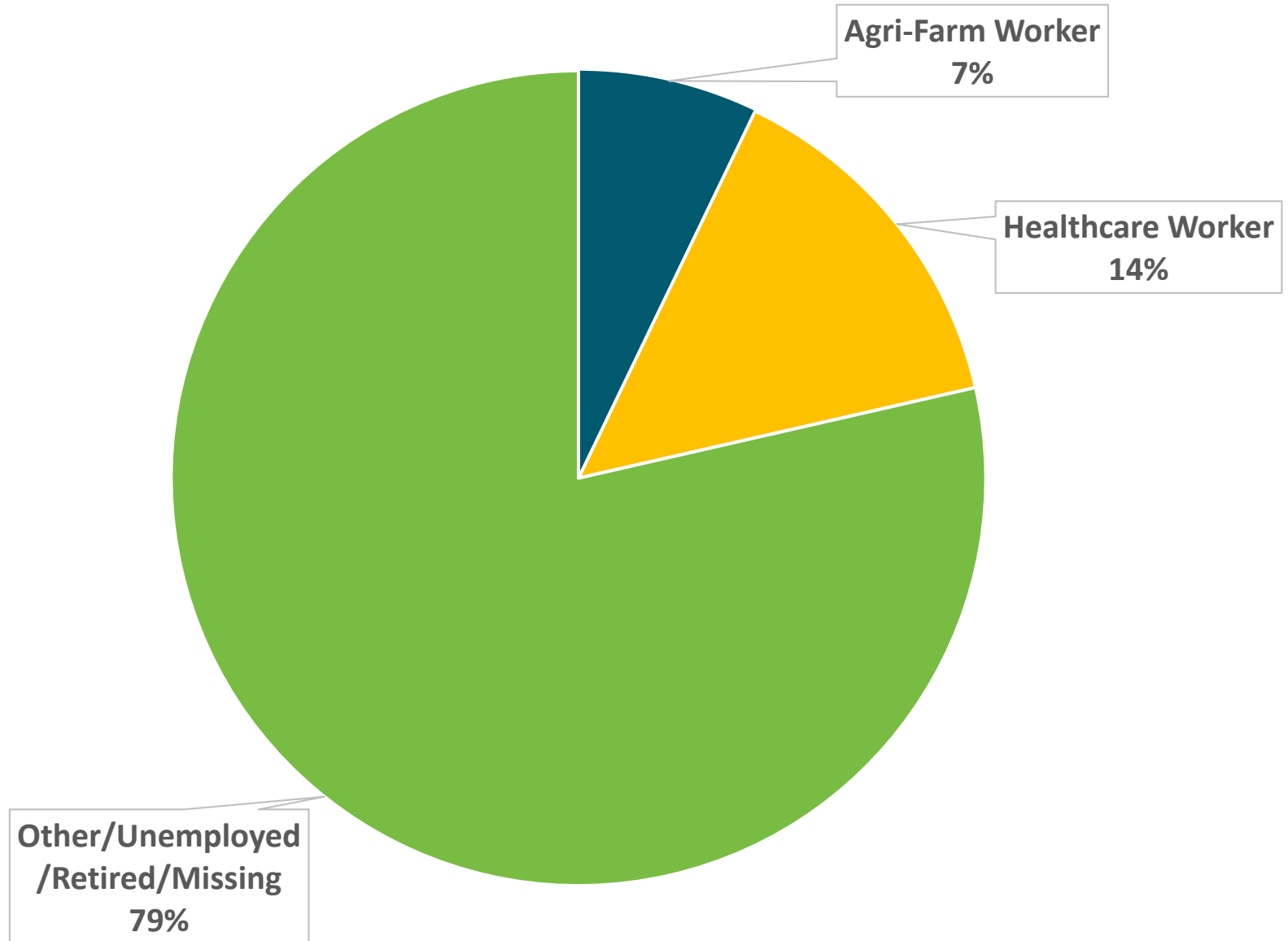
Distribution of COVID-19 Cases by Municipality in last 30 days (August 10 to September 9)



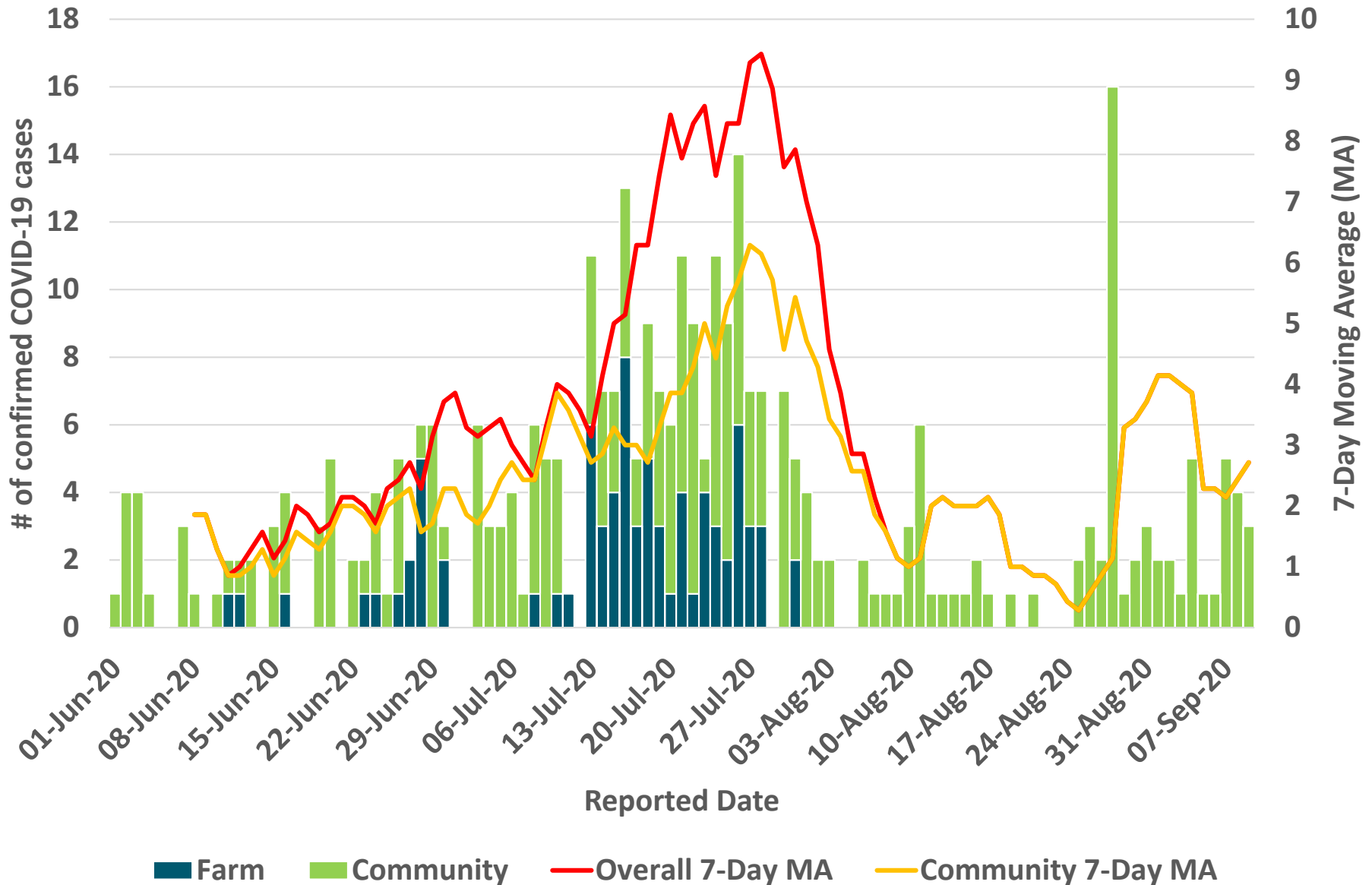
Distribution of COVID-19 Cases by Municipality in last 7 days (September 3 to September 9)



Distribution of COVID-19 Cases by Occupation in the last 7 days (September 3 to September 9)

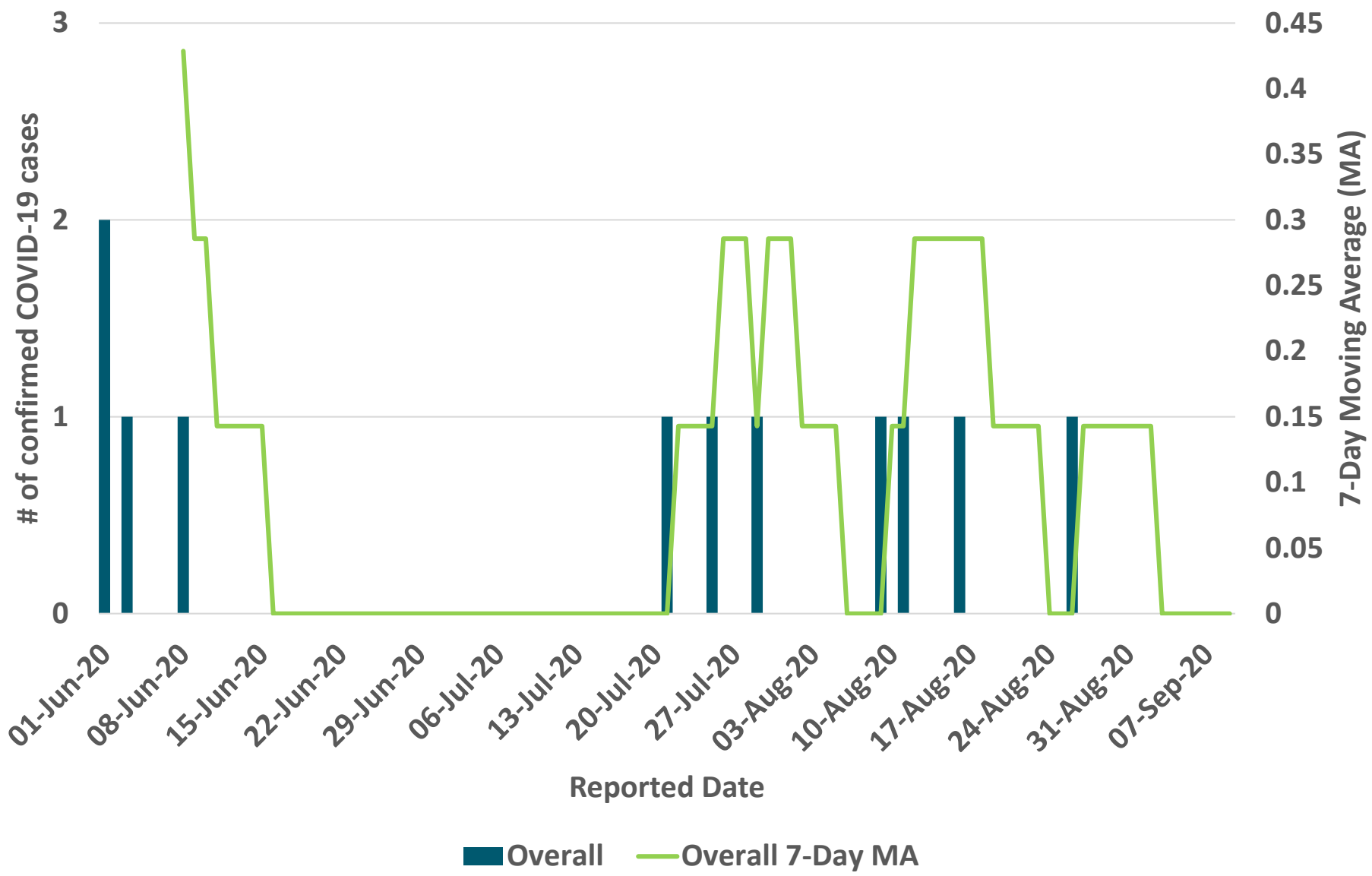


Epidemic Curve by Reported Date For Windsor

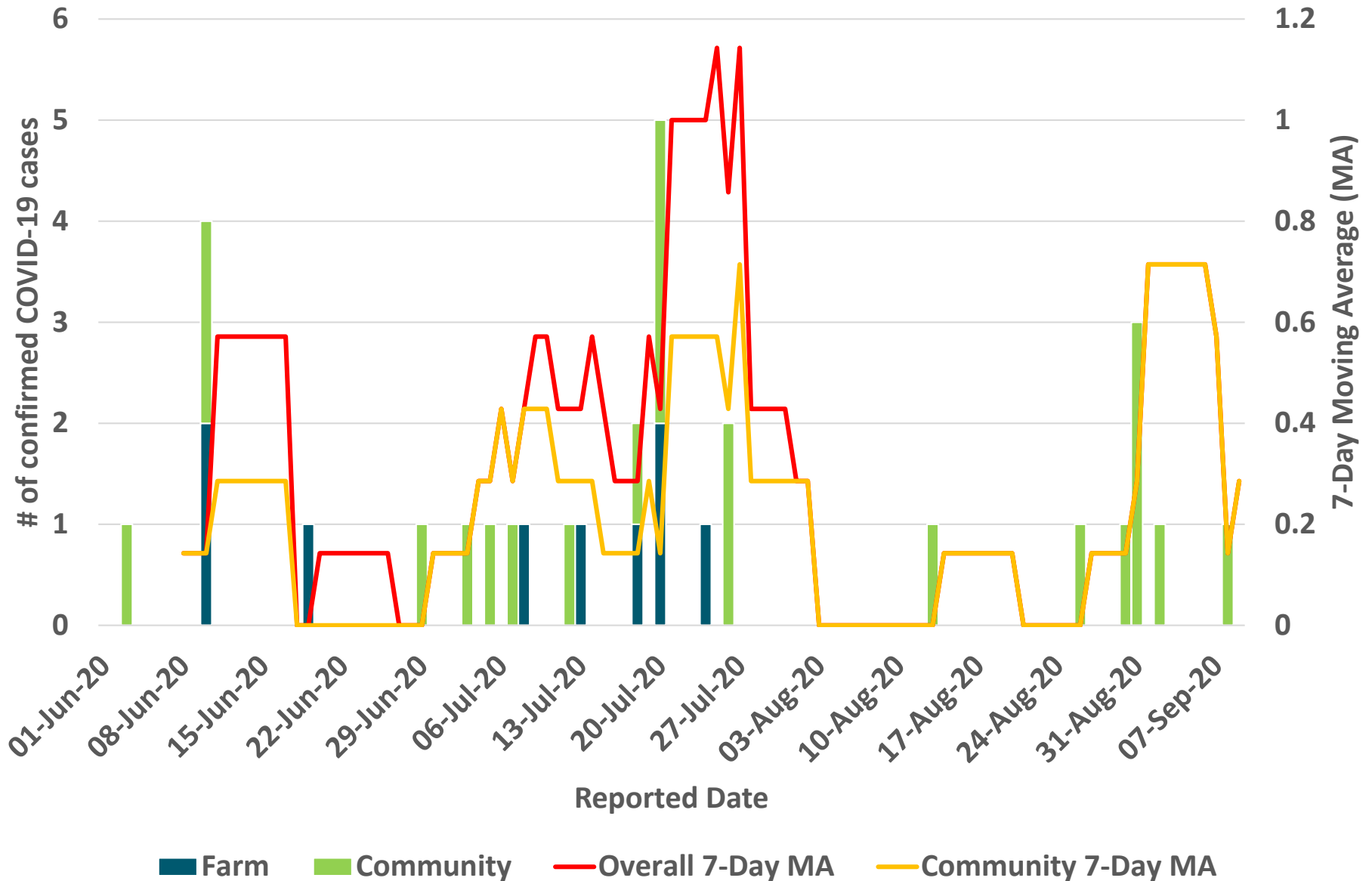


2020-09-15

Epidemic Curve by Reported Date for Amherstburg

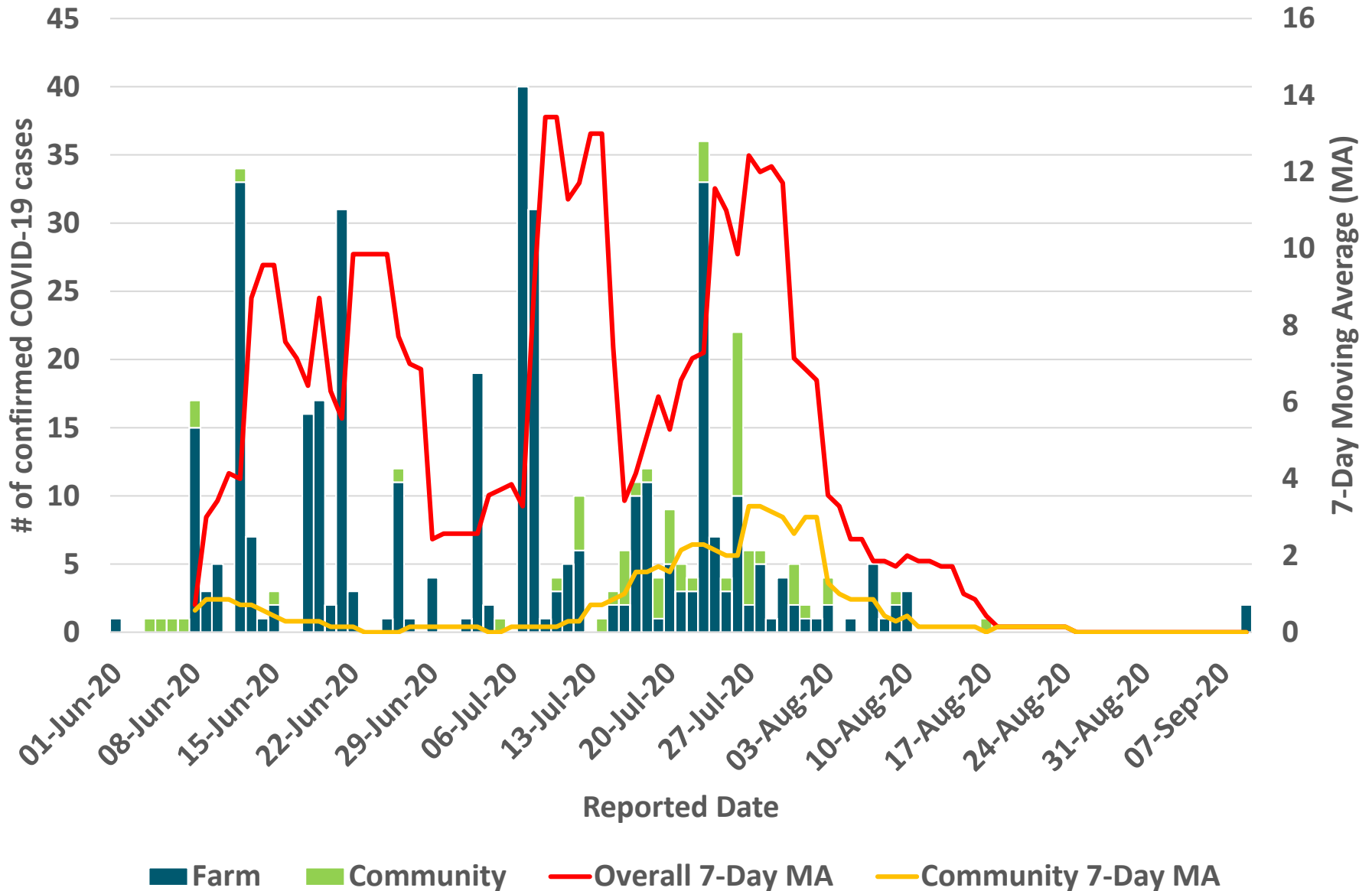


Epidemic Curve by Reported Date for Essex



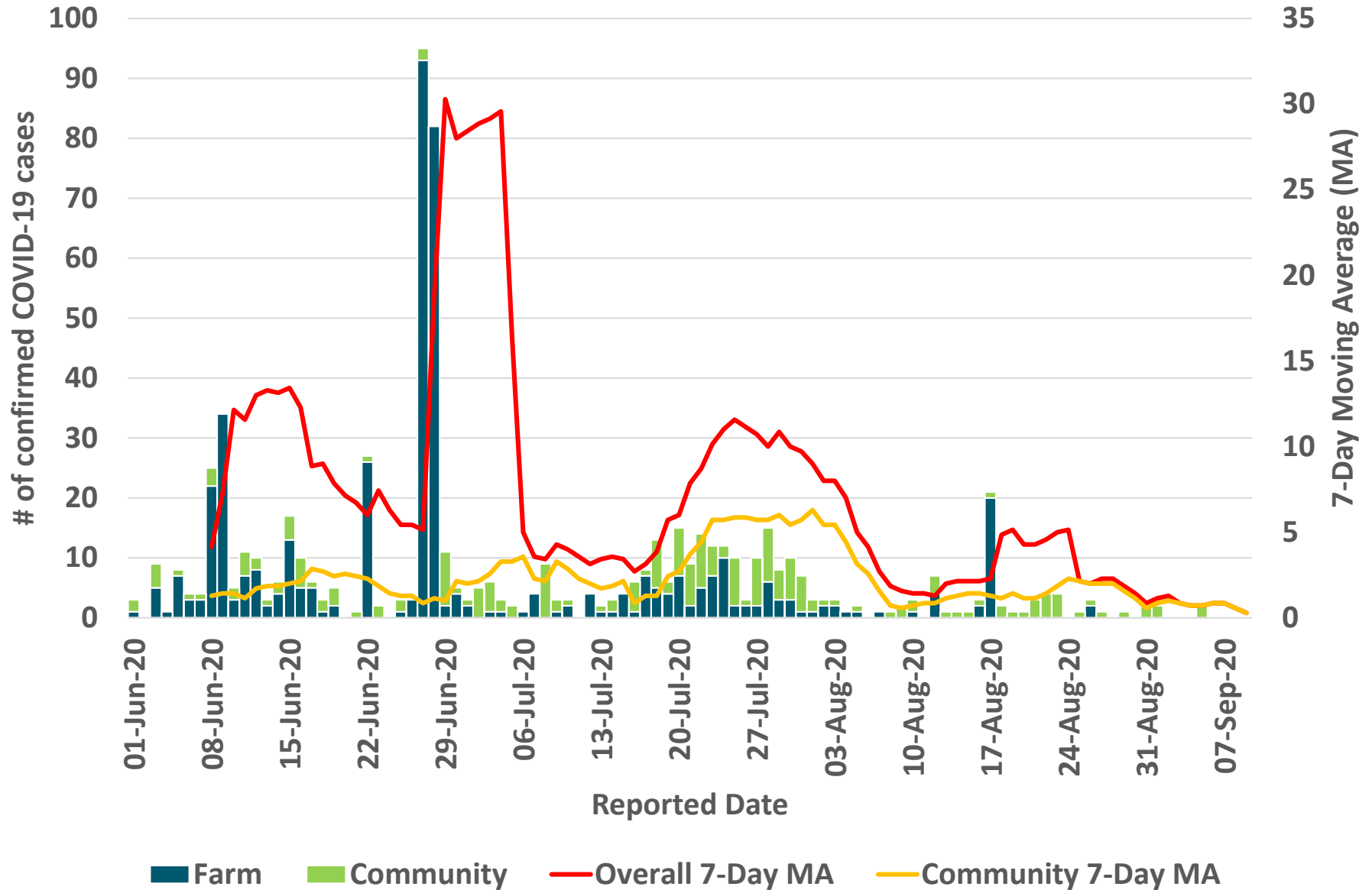
2020-09-15

Epidemic Curve by Reported Date For Kingsville



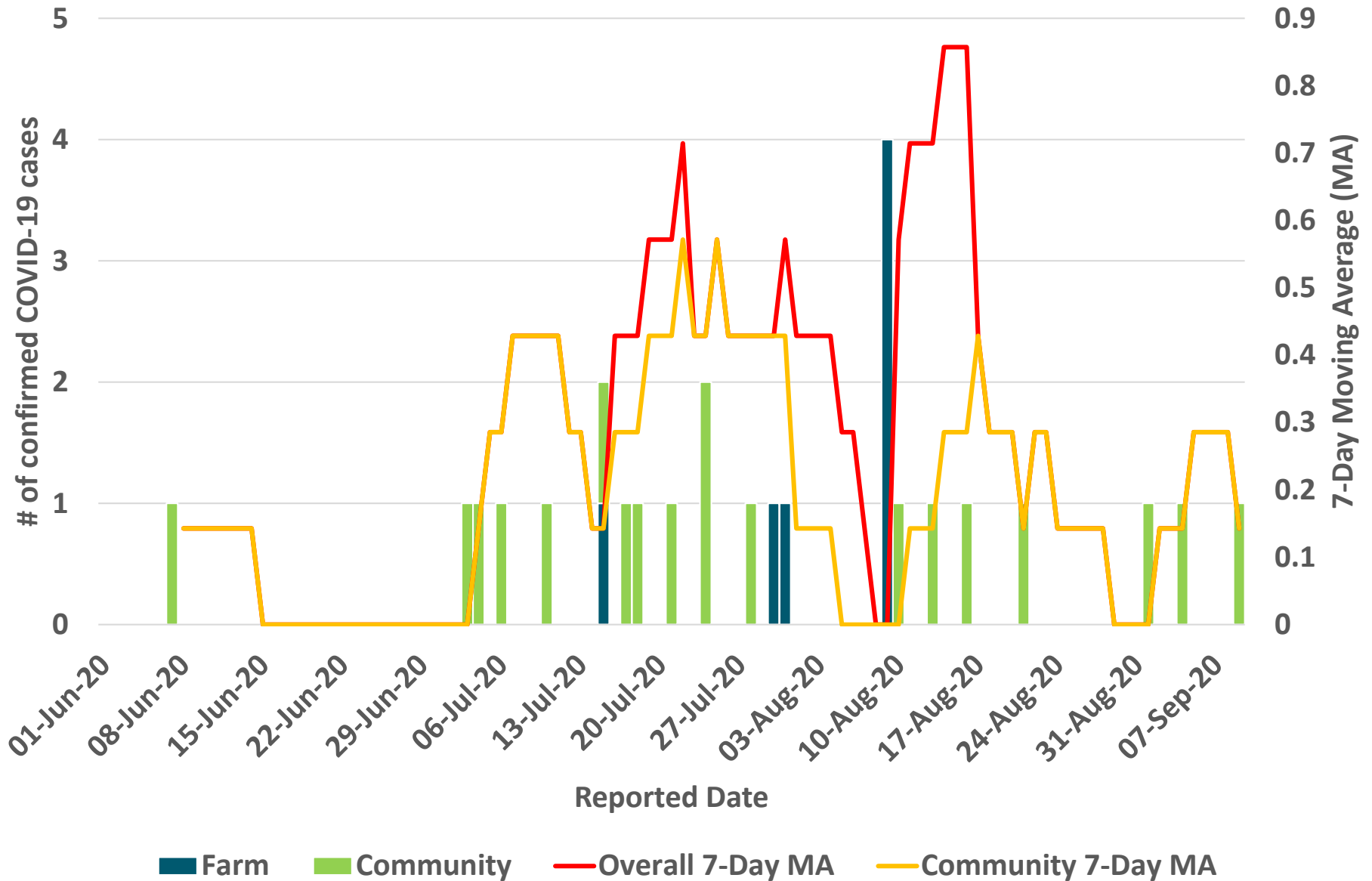
2020-09-15

Epidemic Curve by Reported Date For Leamington



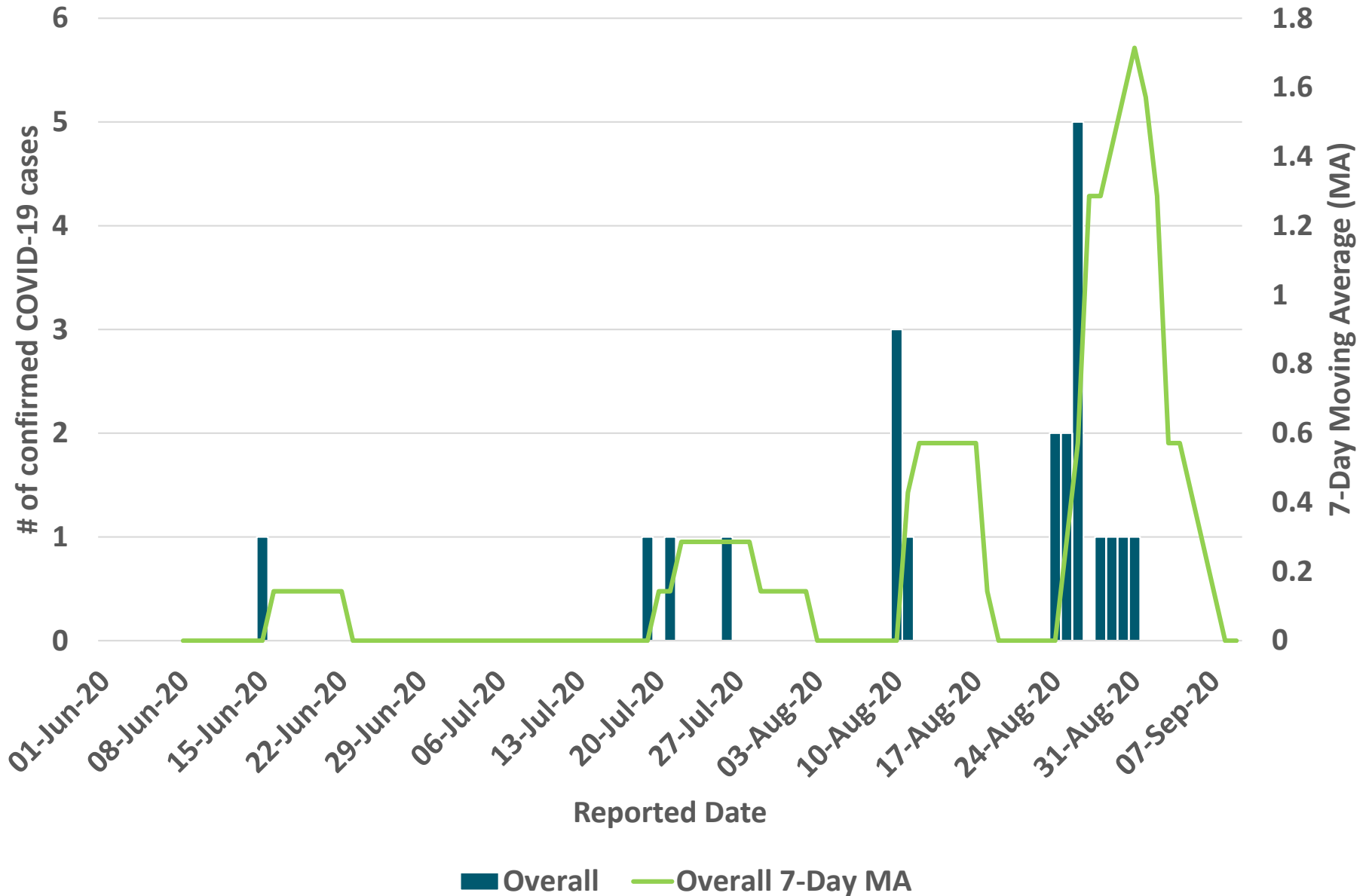
2020-09-15

Epidemic Curve by Reported Date For Lakeshore



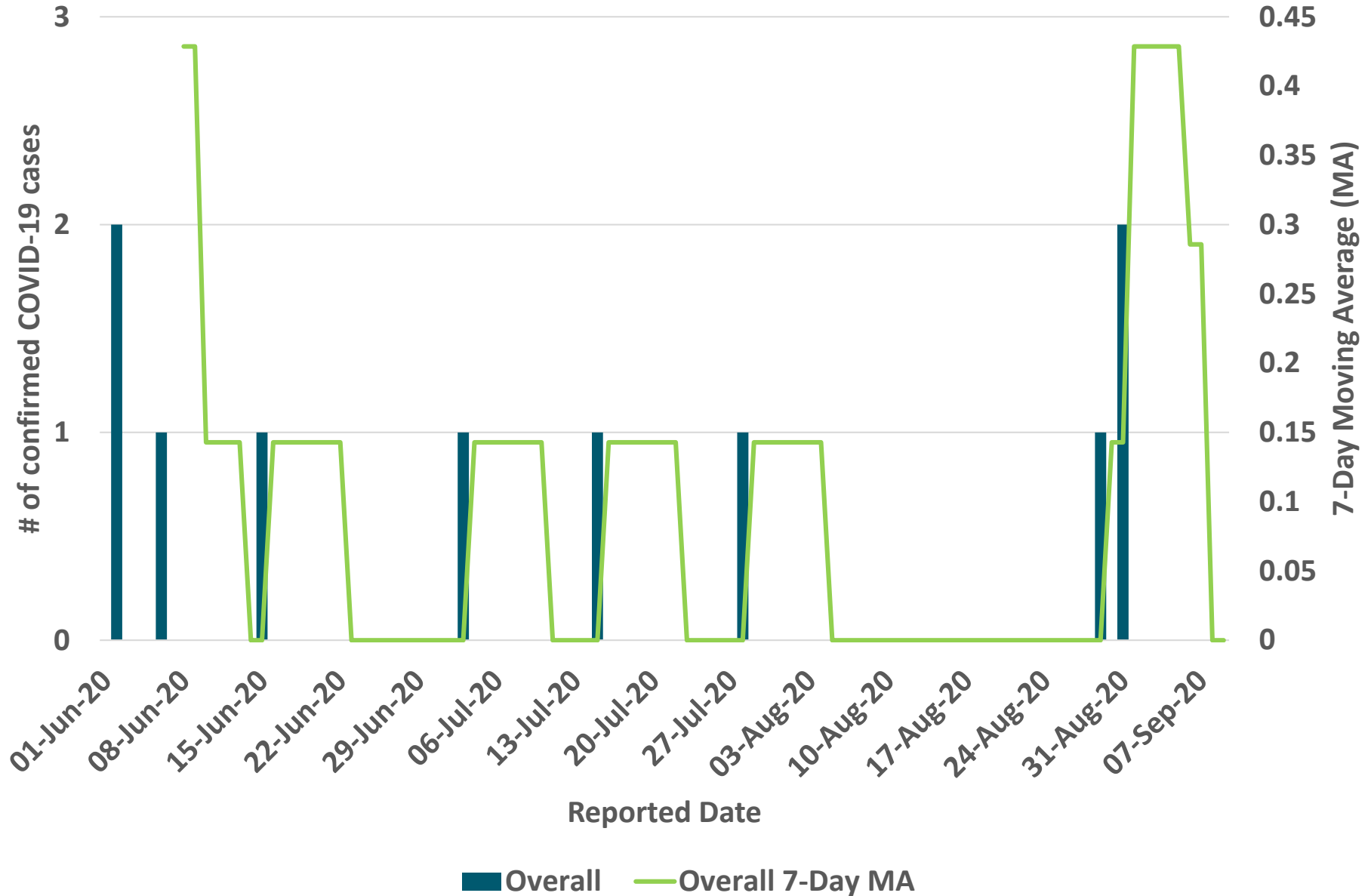
2020-09-15

Epidemic Curve by Reported Date for LaSalle



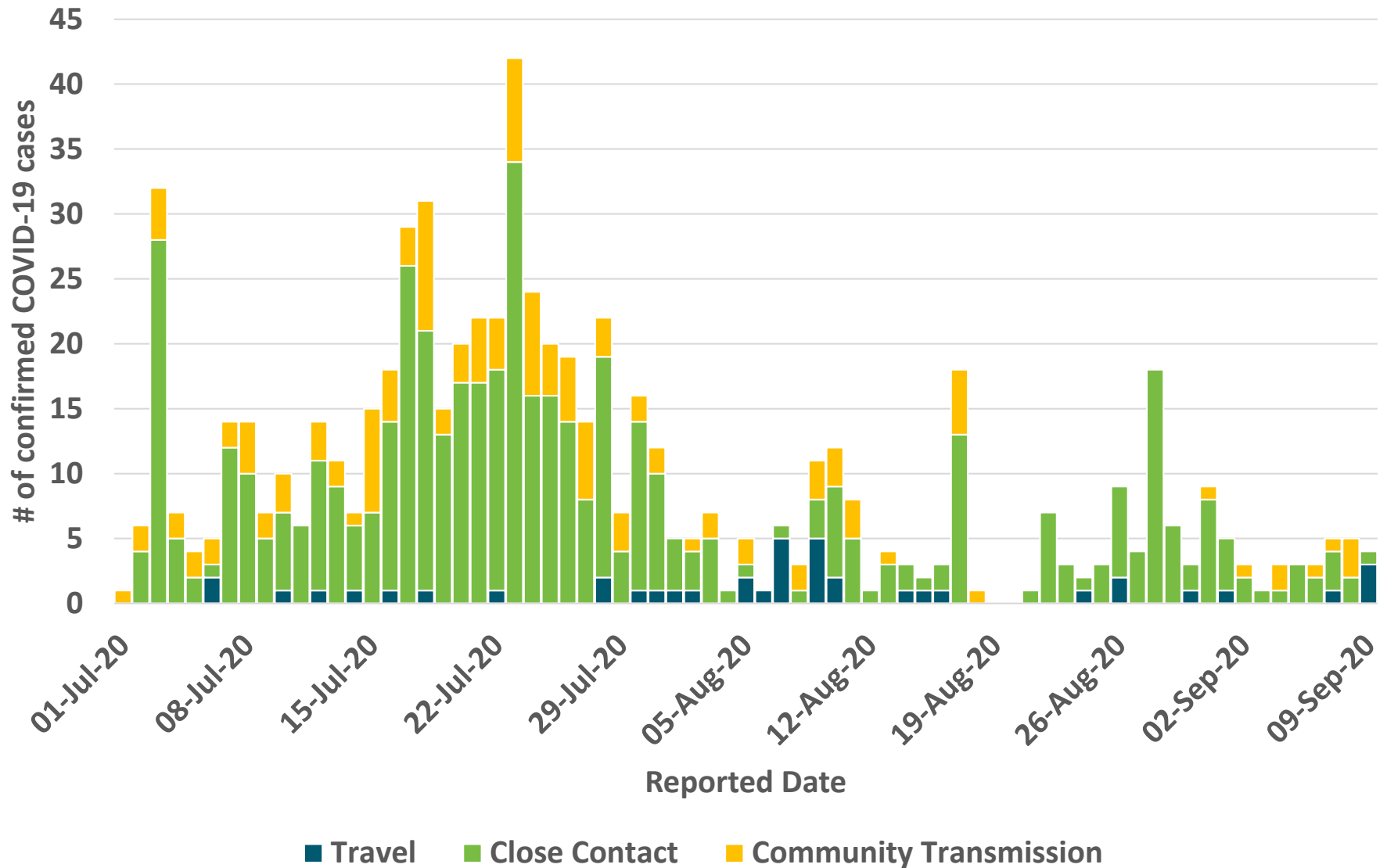
2020-09-15

Epidemic Curve by Reported Date For Tecumseh

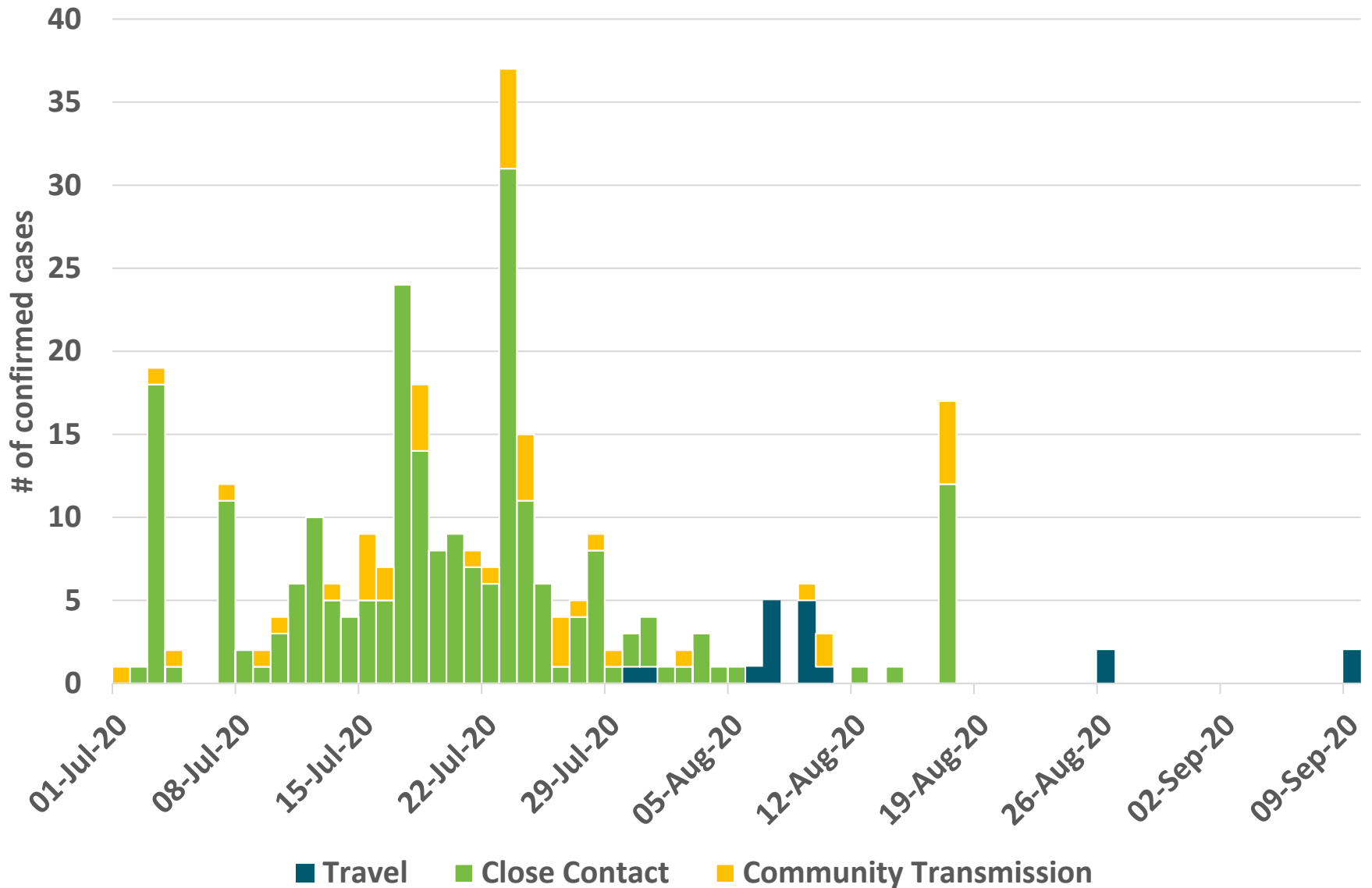


2020-09-15

Exposure History by Reported Date

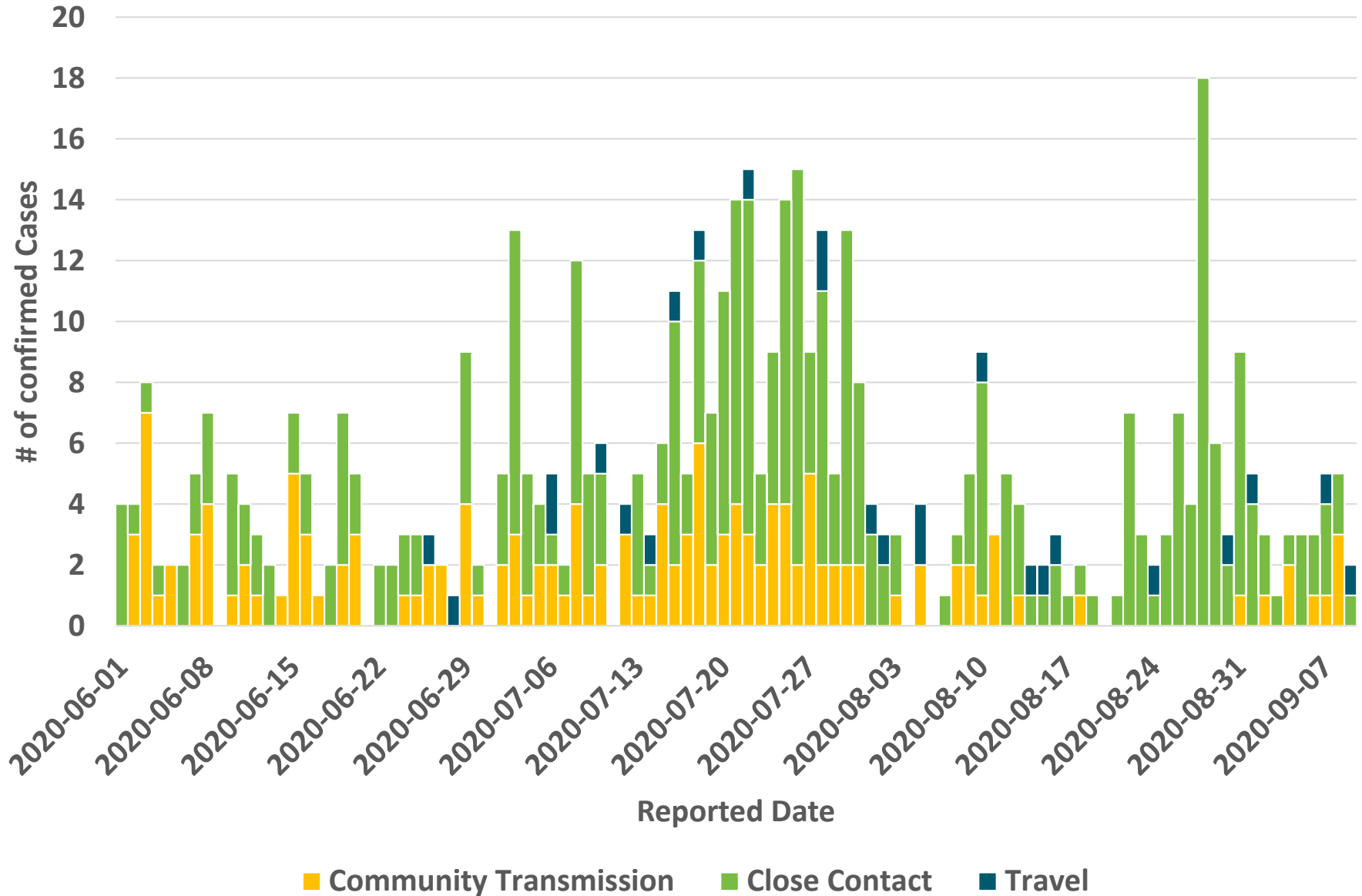


Exposure History by Reported Date Among Agri-Farm Workers

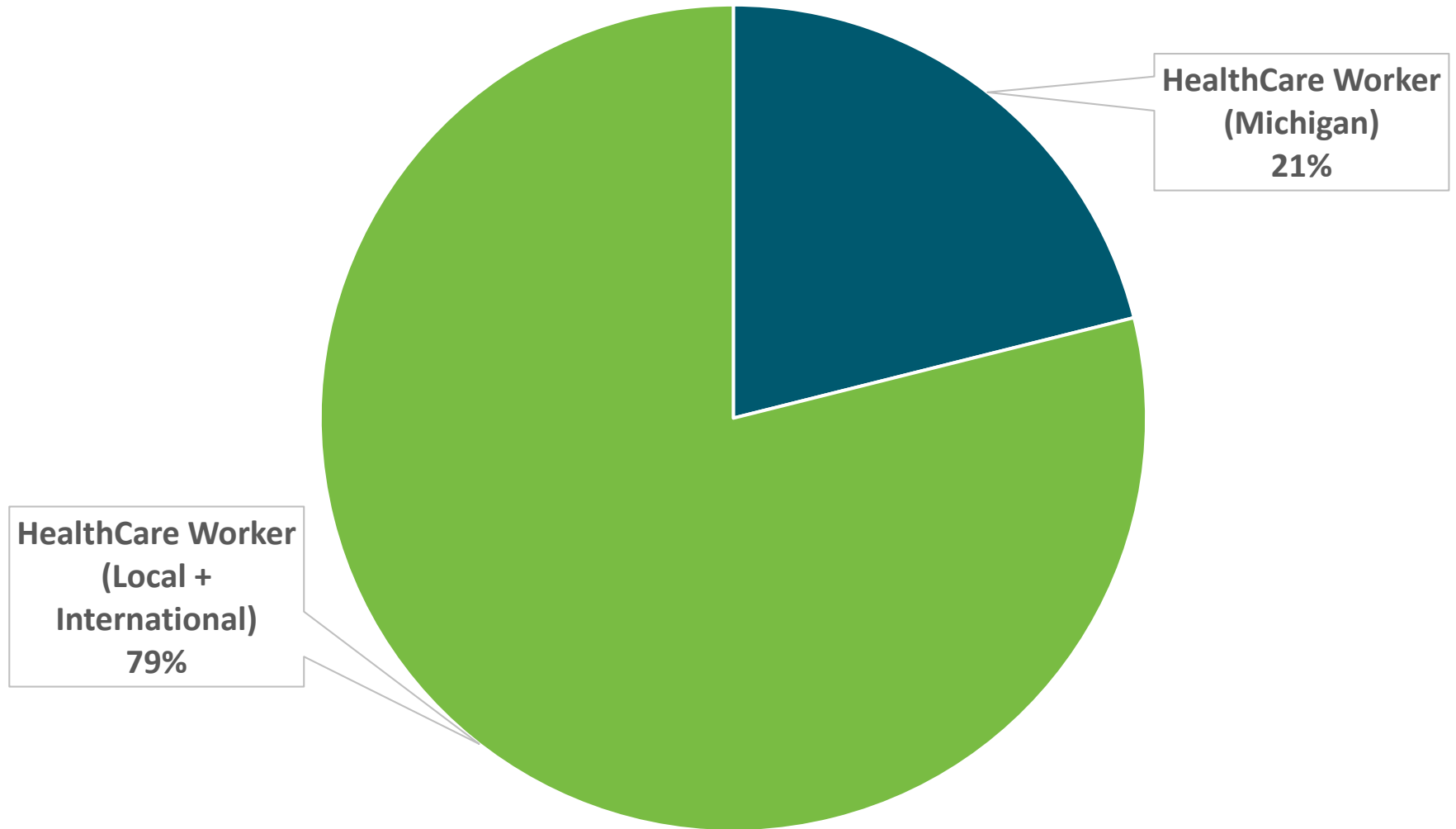


2020-09-15

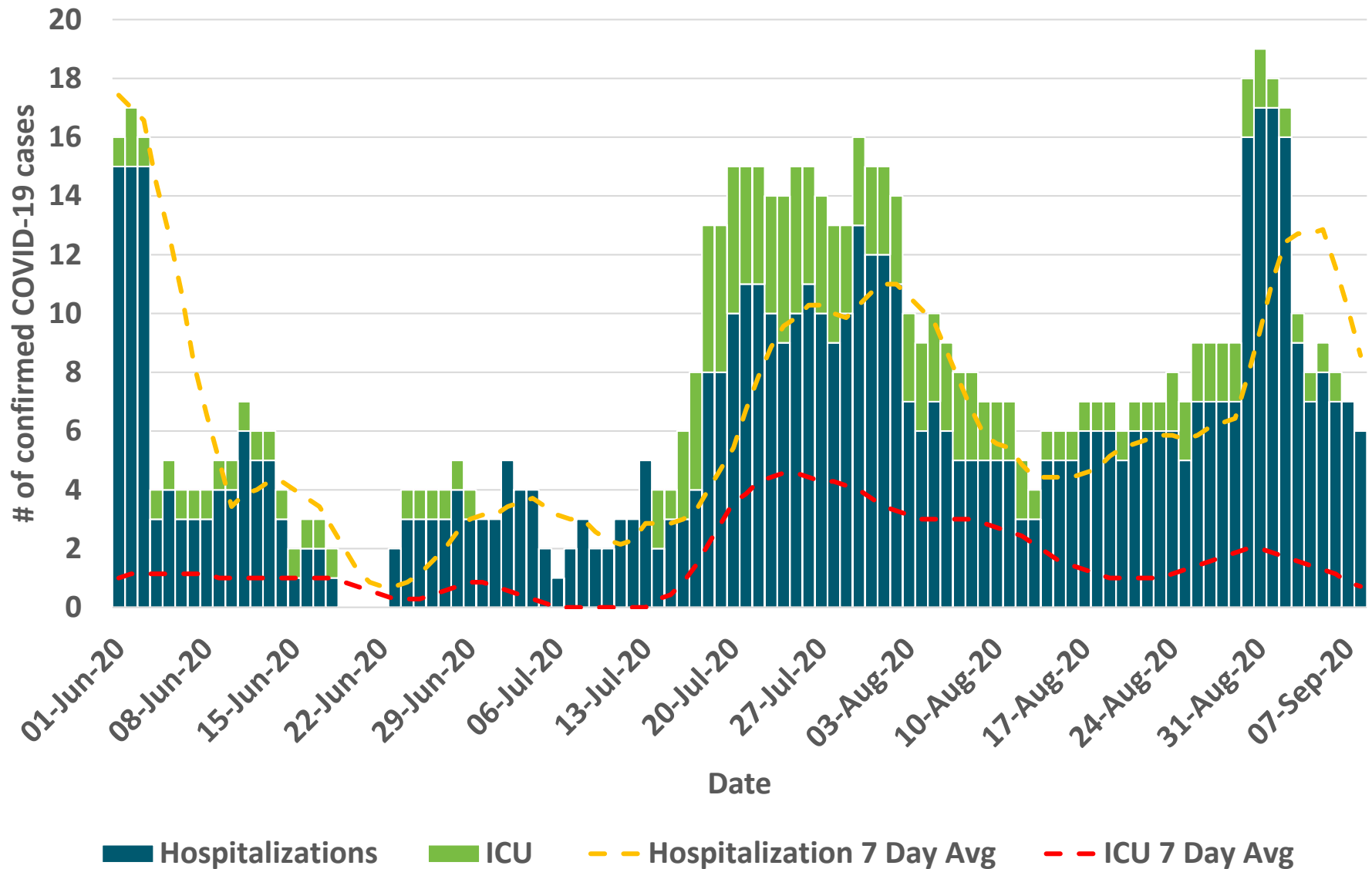
Exposure History by Reported Date Among Non-AgriFarm Cases



COVID-19 Cases by Healthcare Worker

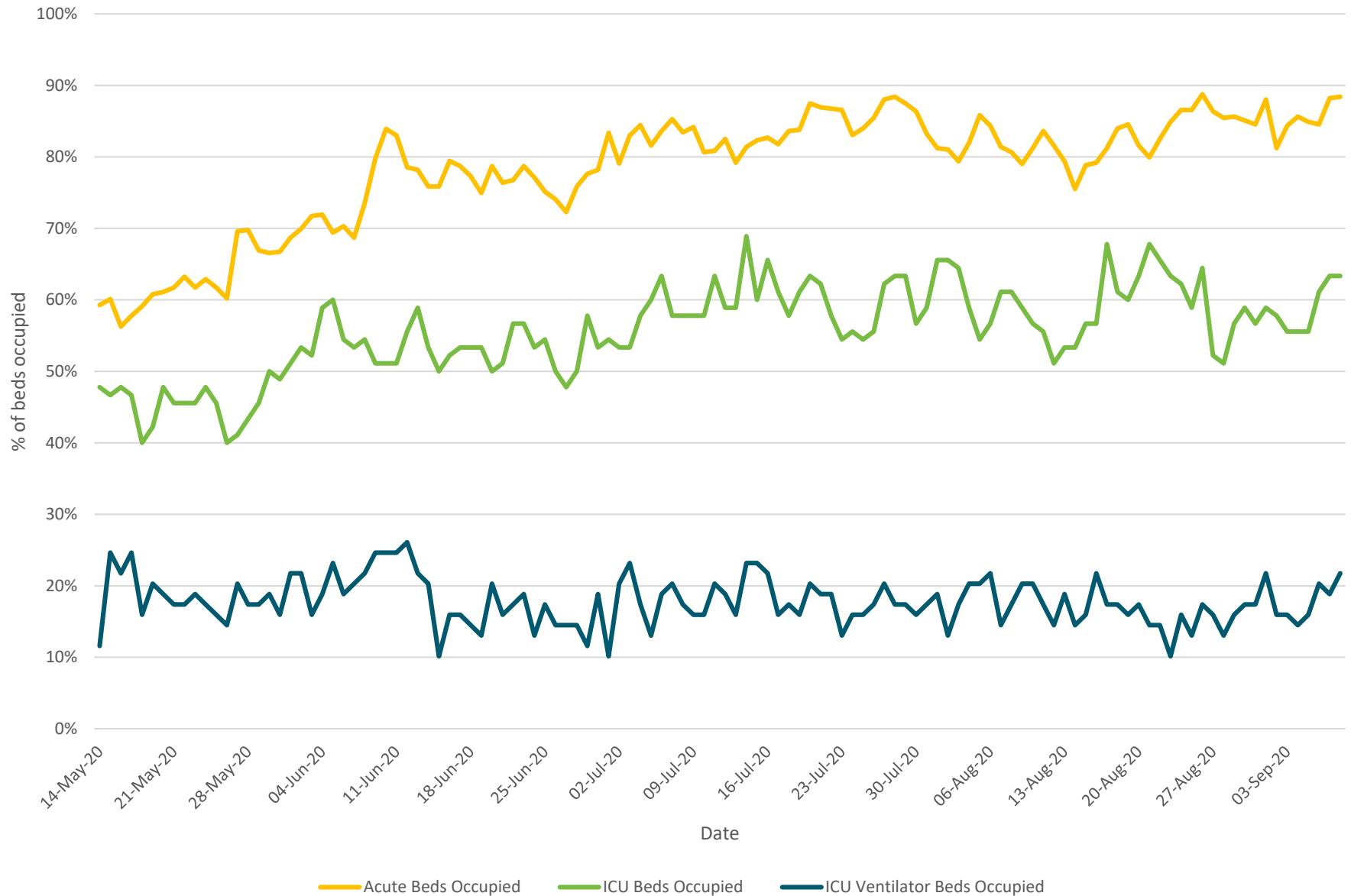


Hospitalizations & ICU for COVID-19



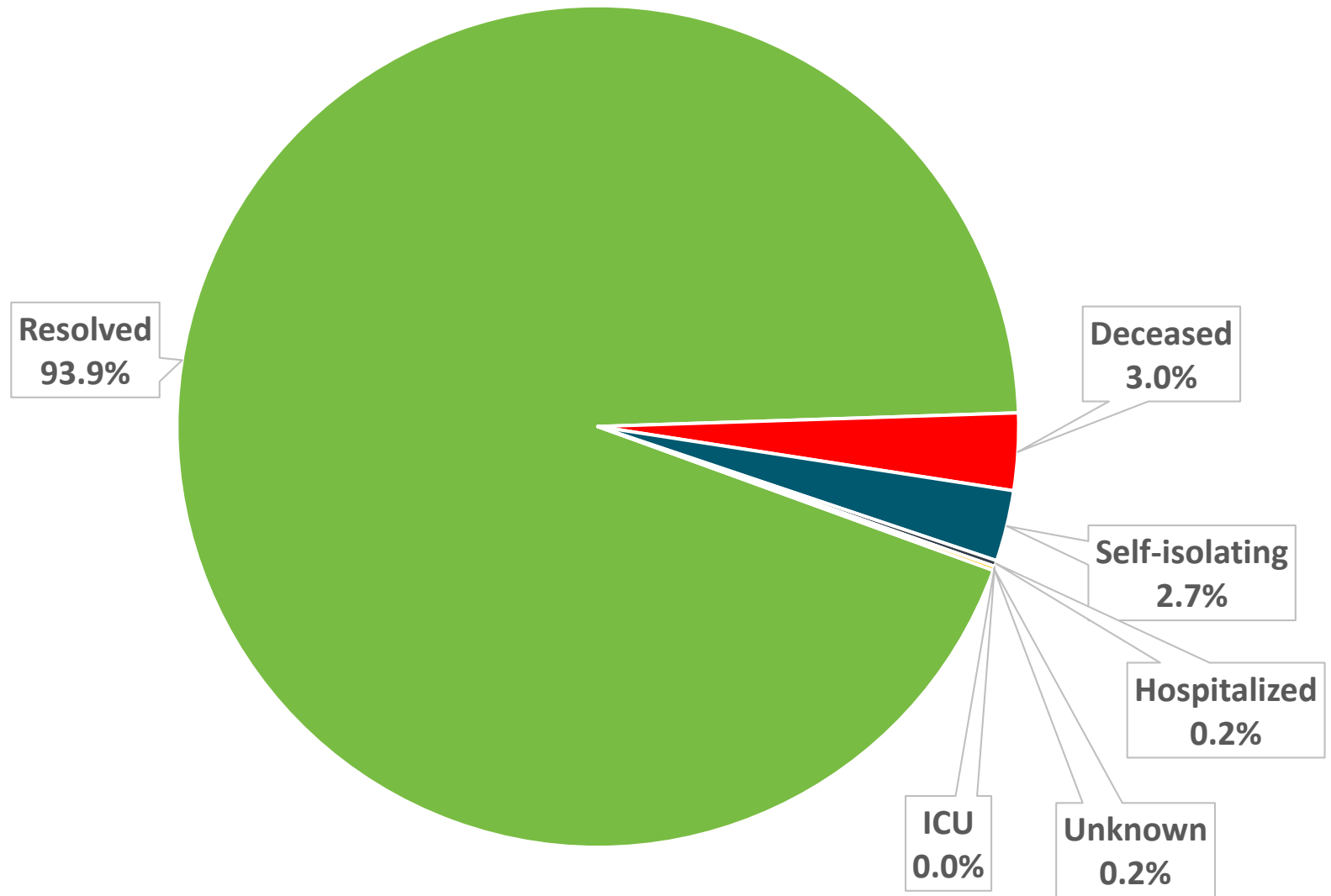
2020-09-15

Health Care System Capacity



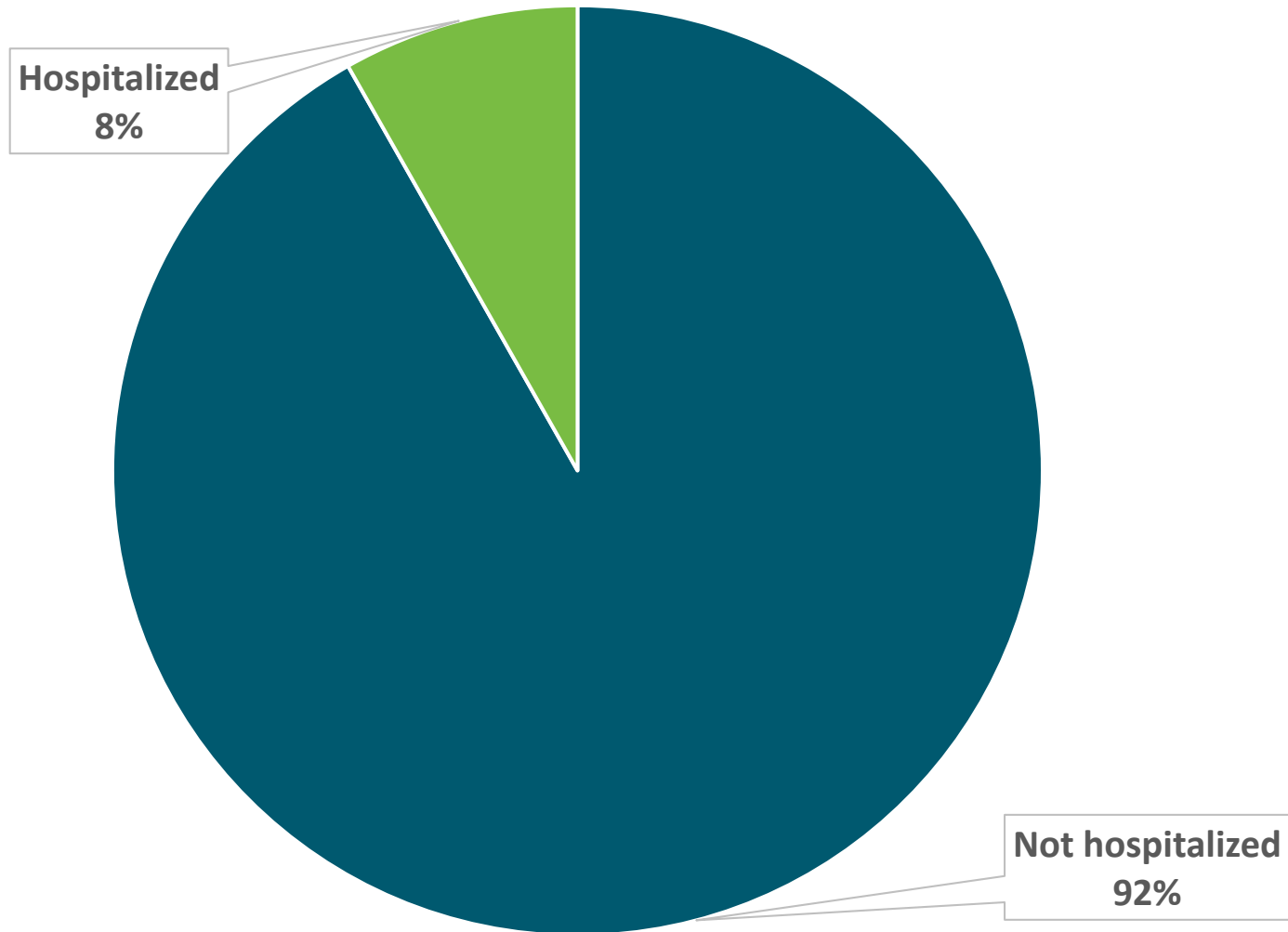
2020-09-15

Current Outcomes

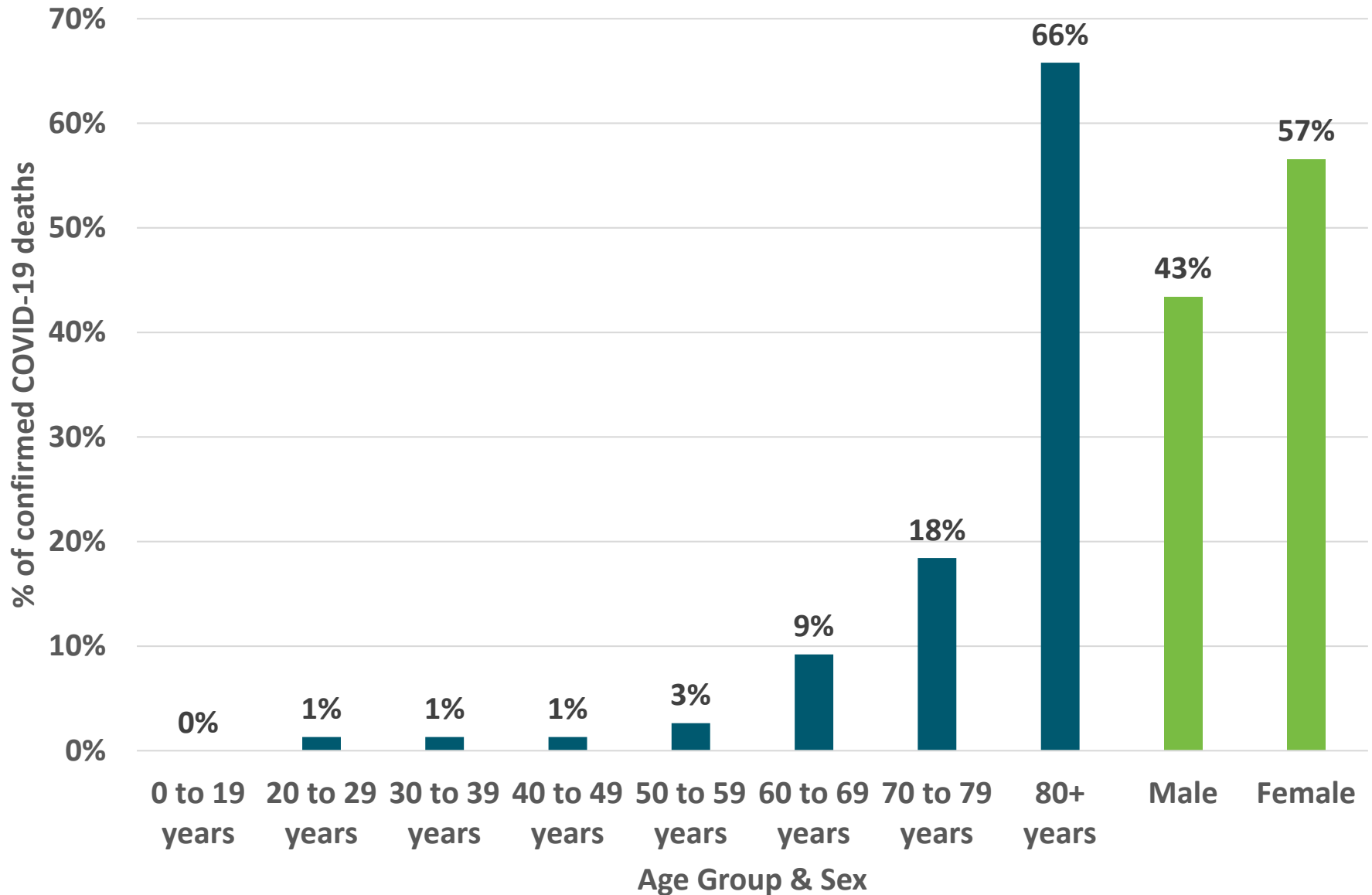


2020-09-15

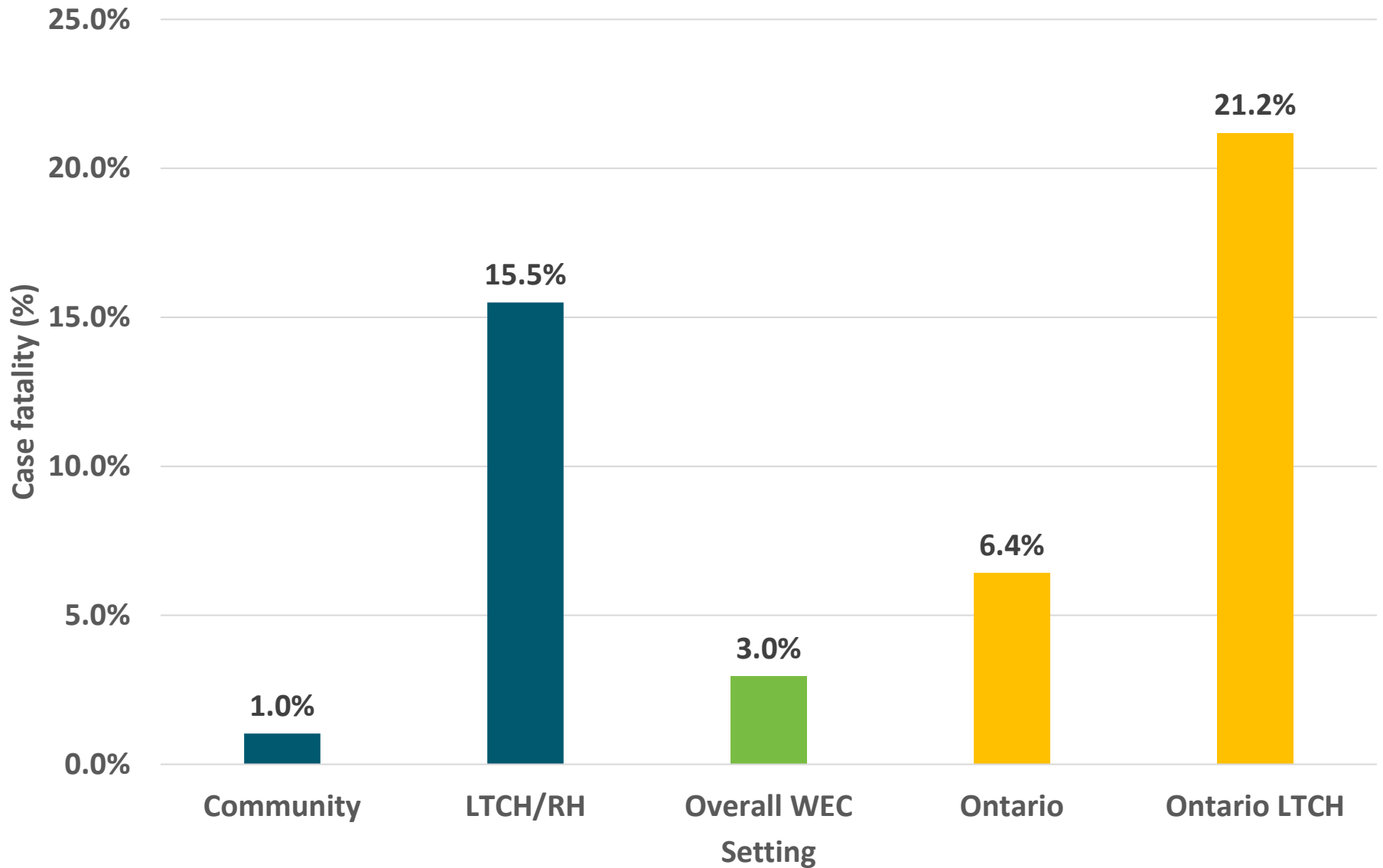
Ever Hospitalized



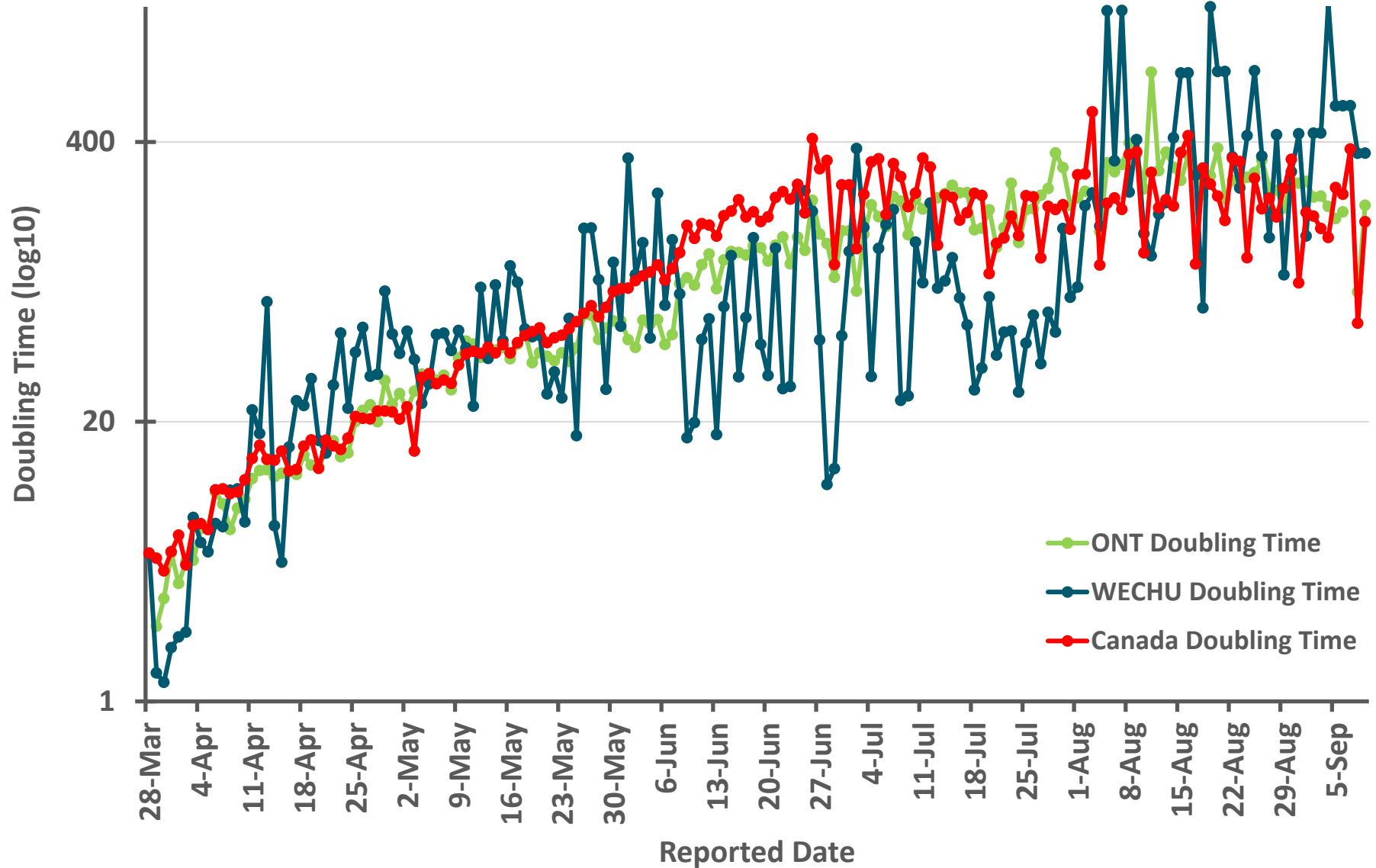
Age & Sex Breakdown of COVID-19 Deaths



Case Fatality Rate

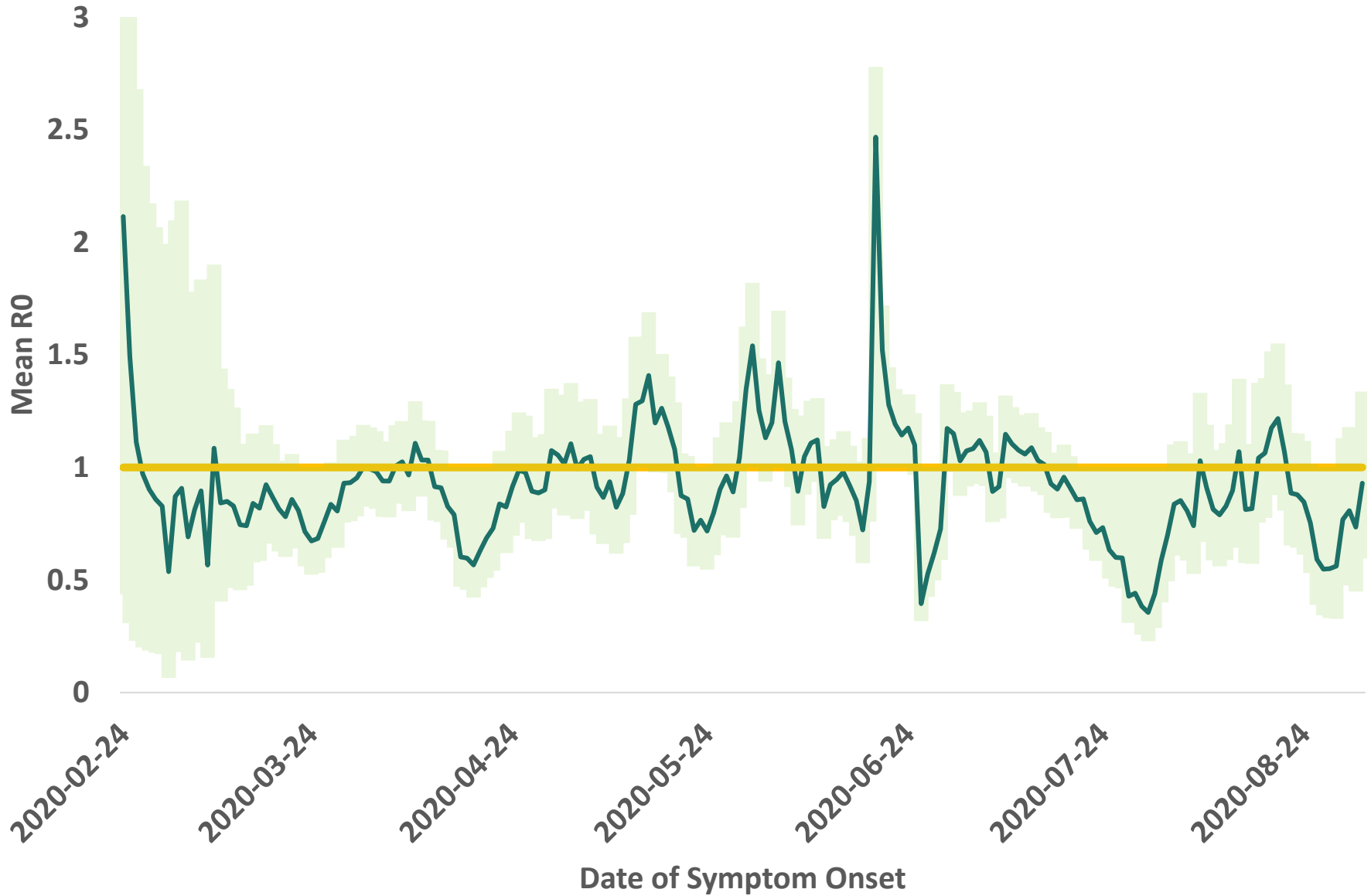


Doubling Time (Day over Day Comparison)



2020-09-15

Mean R0 (Effective)



2020-09-15

Summary

- Windsor-Essex is seeing low cases overall.
- The primary source of exposure continues to be close contact with a confirmed case
- COVID-19 related hospitalizations has declined while ICU occupancy is low.
- Day-over-day doubling time in Windsor-Essex is slightly higher than the province and nationally
- R_0 (effective) value is 0.93 indicating a decrease in transmission in Windsor-Essex
 - BUT this has increased from the previous week